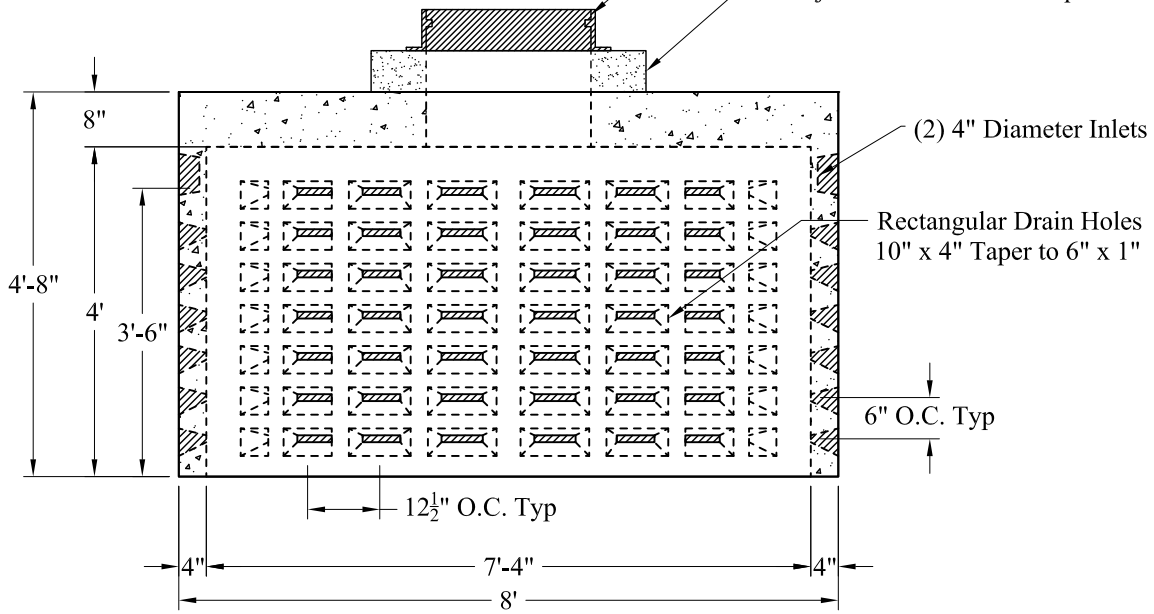


Volume:
316 Gals / Vert Ft

Top View

Optional 24" Frame & Grate

Adjust to Elevation as Required



Section View

Est Weight: 7,900 Lbs

General Notes

- 1.) Steel Reinforcement Conforms To Latest ASTM Specifications:
ASTM A-615 Grade 60 Rebar
ASTM A-185 Welded Wire Fabric
- 2.) Concrete: $f_c = 4,000$ psi @ 28 Days Minimum
- 3.) Design Loading: AASHTO-HS20-44
- 4.) Optional Cast Iron Covers or Concrete Covers Available
- 5.) Hole Coring Available for Larger Diameter Pipes

Phoenix
Precast
Products

8' O.D. 1,250 Gallon
Dry Well

P/N: DW8-4R24OFF