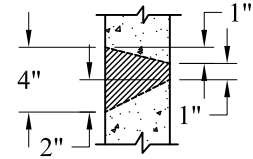
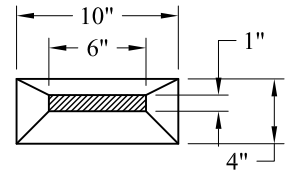
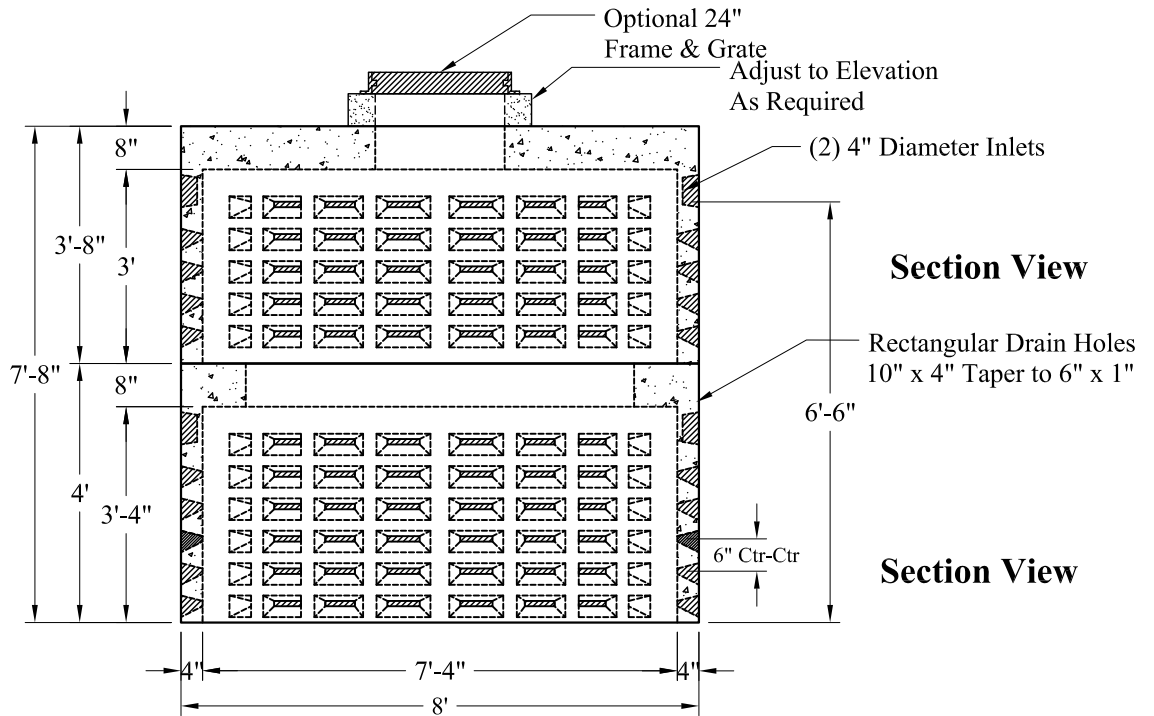


**Volume:**  
316 Gals / Vert Ft

**Top View**



Detail of Openings  
(NTS)



**Section View**

**Section View**

**General Notes**

- 1.) Steel Reinforcement Conforms To Latest ASTM Specifications:  
ASTM A-615 Grade 60 Rebar  
ASTM A-185 Welded Wire Fabric
- 2.) Concrete:  $f_c = 4,000$  psi @ 28 Days Minimum
- 3.) Design Loading: AASHTO-HS20-44
- 4.) Optional Cast Iron Covers or Concrete Covers Available
- 5.) Hole Coring Available for Larger Diameter Pipes
- 6.) All Sections Are Butt Joint

P/N:	Est Weights
Top: DW8-3R24OFF	7,150 Lbs
Bottom: DW8-4R72CL	4,850 Lbs
Total:	12,000 Lbs

Phoenix  
Precast  
Products

8' O.D. 2,100 Gallon  
Dry Well

P/N: See Above

Concord, NH 03301