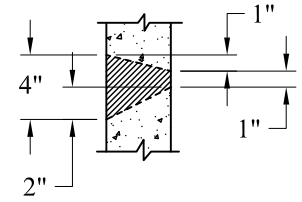
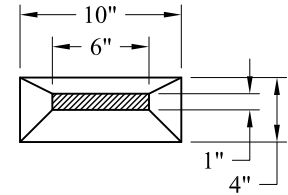
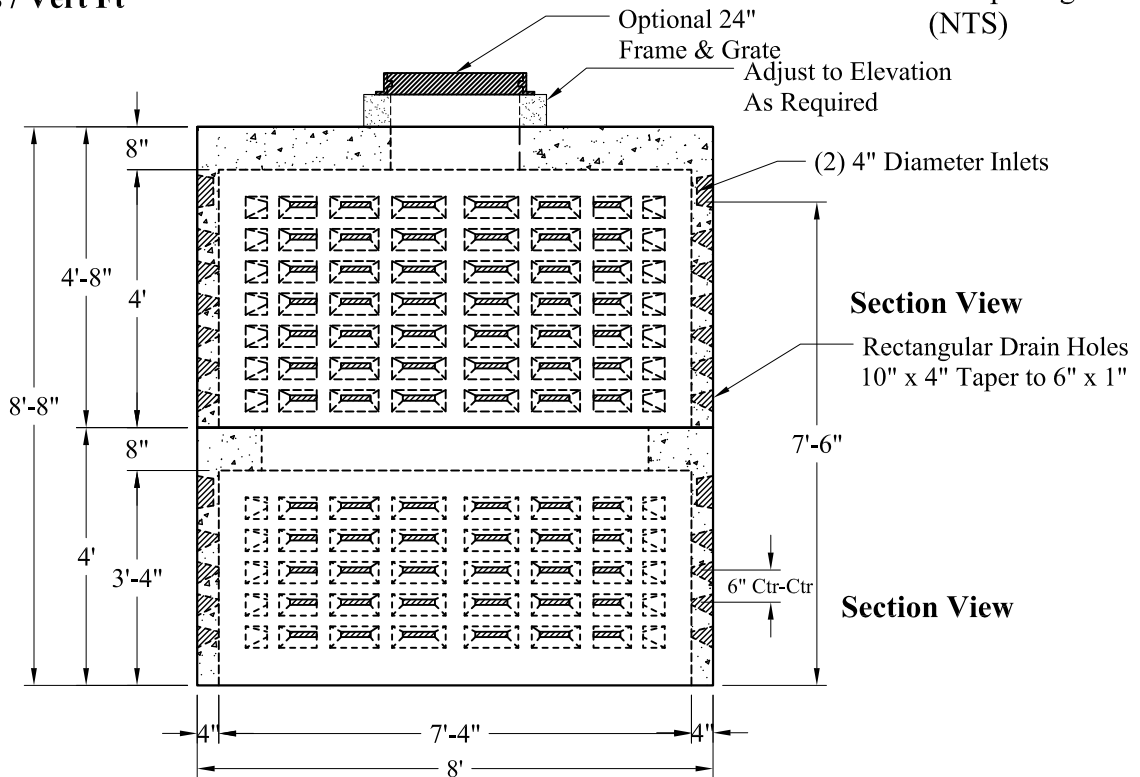


Volume:
316 Gals / Vert Ft

Top View



Detail of Openings (NTS)



Section View

Section View

P/N:	Est Weights
Top: DW8-4R24OFF	7,900 Lbs
Bottom: DW8-4R72CL	4,850 Lbs
Total:	12,750 Lbs

General Notes

- 1.) Steel Reinforcement Conforms To Latest ASTM Specifications:
ASTM A-615 Grade 60 Rebar
ASTM A-185 Welded Wire Fabric
- 2.) Concrete: $f_c = 4,000$ psi @ 28 Days Minimum
- 3.) Design Loading: AASHTO-HS20-44
- 4.) Optional Cast Iron Covers or Concrete Covers Available
- 5.) Hole Coring Available for Larger Diameter Pipes
- 6.) All Sections Are Butt Joint

**Phoenix
Precast
Products**

**8' O.D. 2,500 Gallon
Dry Well**

P/N: See Above

Concord, NH 03301