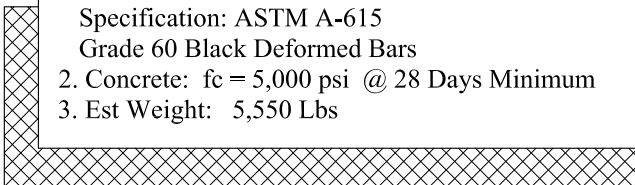


General Notes

1. Steel Reinforcement Conforms to Latest ASTM Specification: ASTM A-615 Grade 60 Black Deformed Bars
2. Concrete: $f_c = 5,000$ psi @ 28 Days Minimum
3. Est Weight: 5,550 Lbs



Phoenix
Precast
Products

N.H. DOT
12" RCP "L" Shaped
Headwall (Left)

P/N: HWL-12DOTL