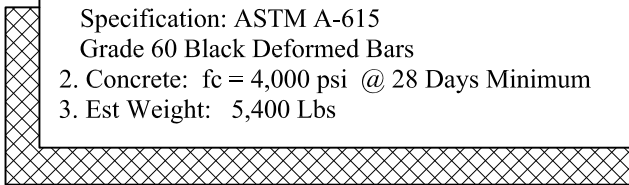


**General Notes**

1. Steel Reinforcement Conforms to Latest ASTM Specification: ASTM A-615  
Grade 60 Black Deformed Bars
2. Concrete:  $f_c = 4,000$  psi @ 28 Days Minimum
3. Est Weight: 5,400 Lbs



Phoenix  
Precast  
Products

Precast Headwall  
Mass. Highway  
15" Pipe

P/N: HW-MASS15