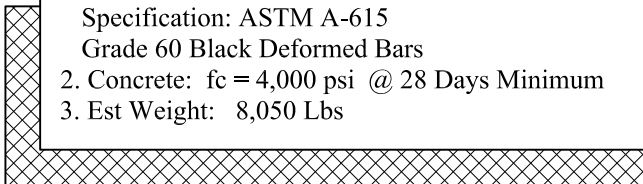


**General Notes**

1. Steel Reinforcement Conforms to Latest ASTM Specification: ASTM A-615 Grade 60 Black Deformed Bars
2. Concrete:  $f_c = 4,000$  psi @ 28 Days Minimum
3. Est Weight: 8,050 Lbs



Phoenix  
Precast  
Products

15" Pipe  
Winged Headwall

P/N: HWW-15

Concord, NH 03301