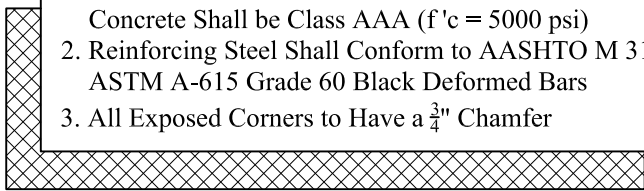


Est Weight: 17,550 Lbs

General Notes

1. Precast Concrete Shall Conform to AASHTO M 199. Concrete Shall be Class AAA (f'c = 5000 psi)
2. Reinforcing Steel Shall Conform to AASHTO M 31, ASTM A-615 Grade 60 Black Deformed Bars
3. All Exposed Corners to Have a $\frac{3}{4}$ " Chamfer



Phoenix
Precast
Products

30" RCP Winged
Headwall with Base

P/N: HWW-30B