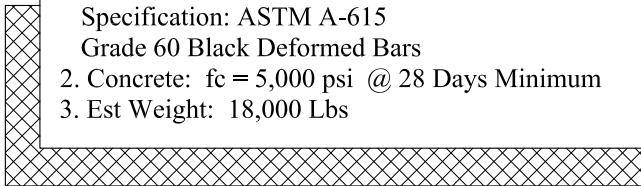


General Notes

1. Steel Reinforcement Conforms to Latest ASTM Specification: ASTM A-615 Grade 60 Black Deformed Bars
2. Concrete: $f_c = 5,000$ psi @ 28 Days Minimum
3. Est Weight: 18,000 Lbs



Phoenix
Precast
Products

N.H. DOT
30" RCP "L" Shaped
Headwall (Right)

P/N: HWL-30DOTR

Concord, NH 03301