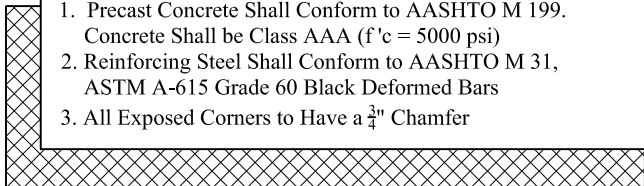


Est Weight: 22,500 Lbs

General Notes

1. Precast Concrete Shall Conform to AASHTO M 199. Concrete Shall be Class AAA ($f'_c = 5000$ psi)
2. Reinforcing Steel Shall Conform to AASHTO M 31, ASTM A-615 Grade 60 Black Deformed Bars
3. All Exposed Corners to Have a $\frac{3}{4}$ " Chamfer



Phoenix
Precast
Products

36" RCP Winged
Headwall with Base

P/N: HWW-36B

Concord, NH 03301