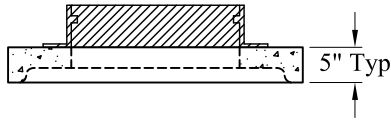
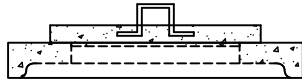


Available With Tongue & Groove
Or Butt Top / Butt Bottom Joints



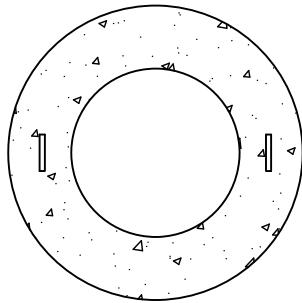
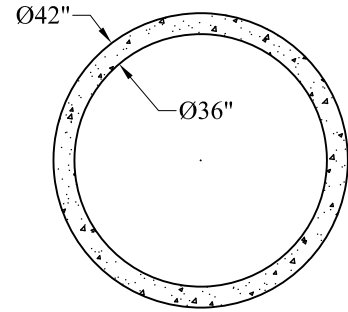
Optional 24" Cast Iron
Frame & Cover



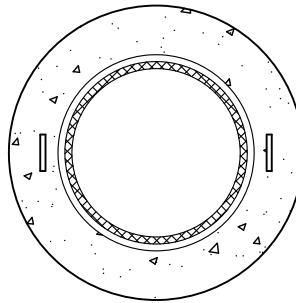
Optional 24" Plug



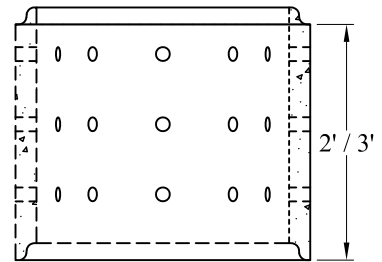
24" Diameter
Plastic Tuff Tite Extension
Cast In



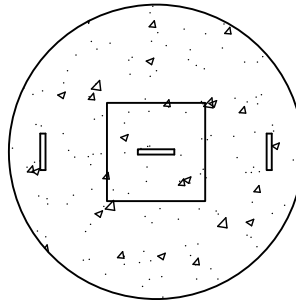
24" Opening



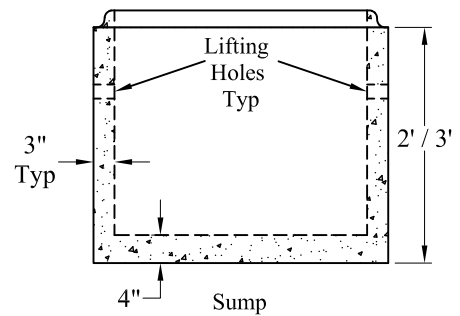
24" Diameter
Plastic Tuff Tite Extension
Cast In



Perforated Tile



14" X 14" Plug



Sump

Item	P/N	Weight
Cover	WTC-24DIA	322 Lbs
Cover	WTC-24DIAPLASTIC	322 Lbs
Cover	WTC-SMPLUG	472 Lbs
1' Riser	WT-36X12	375 Lbs
18" Riser	WT-36X18	565 Lbs
2' Riser	WT-36X24	750 Lbs
3' Riser	WT-36X36	1,125 Lbs
3' Riser Perforated	WTP-36X36	1,125 Lbs
2' Sump	WTS-36X24	1,105 Lbs
3' Sump	WTS-36X36	1,480 Lbs
3' Sump Perforated	WTPS-36X36	1,480 Lbs

General Notes

- 1.) Reinforcement Steel Conforms to Latest ASTM Specifications:
ASTM A185 and ASTM A615 Grade 60 Rebar
- 2.) Concrete: $f_c = 4,000$ psi @ 28 Days Minimum
- 3.) Covers Available With Optional Plug Sizes Or Openings
- 4.) Pipe Openings Cored To Required Specifications
- 5.) 53 Gallons/Vertical Foot

Phoenix
Precast
Products

3' I. D.
Dry Wells

P/N: See Above

Concord, NH 03301