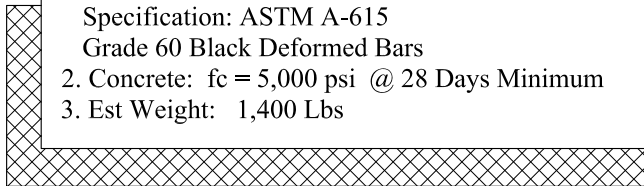


General Notes

1. Steel Reinforcement Conforms to Latest ASTM Specification: ASTM A-615 Grade 60 Black Deformed Bars
2. Concrete: $f_c = 5,000$ psi @ 28 Days Minimum
3. Est Weight: 1,400 Lbs



Phoenix
Precast
Products

NHDOT UL-2
6" Underdrain "L"
135° Headwall

P/N: HW-6DOTUL2

Concord, NH 03301