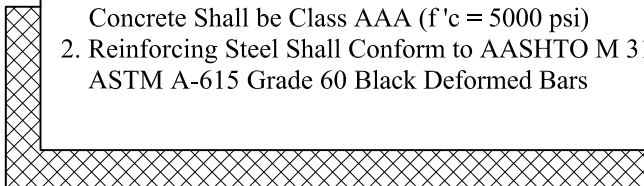


**General Notes**

1. Precast Concrete Shall Conform to AASHTO M 199. Concrete Shall be Class AAA ( $f'c = 5000$  psi)
2. Reinforcing Steel Shall Conform to AASHTO M 31, ASTM A-615 Grade 60 Black Deformed Bars



Est Weight: 8,100 Lbs

Phoenix  
Precast  
Products

Dual 12" RCP  
Winged Headwall

P/N: HWW-D12

Concord, NH 03301