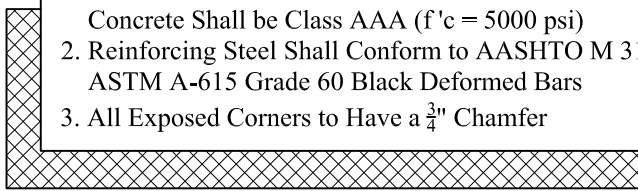


Est Weight: 15,470 Lbs

**General Notes**

1. Precast Concrete Shall Conform to AASHTO M 199. Concrete Shall be Class AAA (f'c = 5000 psi)
2. Reinforcing Steel Shall Conform to AASHTO M 31, ASTM A-615 Grade 60 Black Deformed Bars
3. All Exposed Corners to Have a 3/4" Chamfer



Phoenix  
Precast  
Products

Dual 24" RCP  
Winged Headwall  
with Base

P/N: HWW-D24B