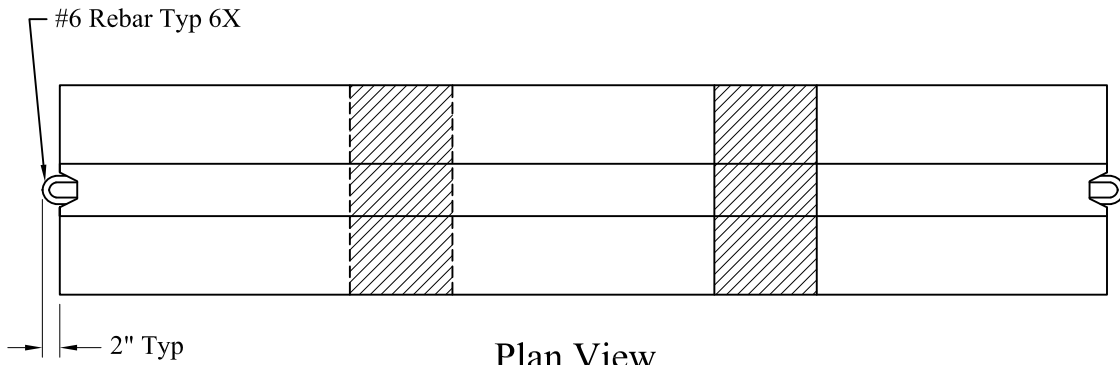
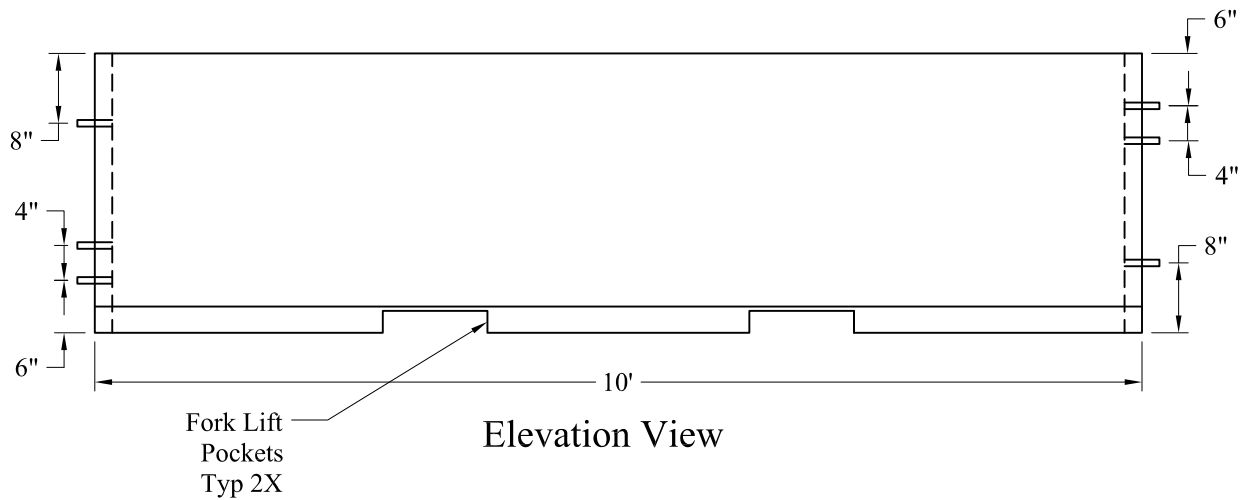


End View



Plan View



Elevation View

**General Notes**

- 1. Concrete:  $f'c = 4,000$  psi @ 28 Days Minimum.
- 2. Reinforcing Steel Conforms to Latest ASTM Specification: ASTM-A615 Grade 60 Black Deformed Bars, With a Minimum of 2" Cover
- 3. All Exposed Edges of Concrete Shall Have a  $\frac{3}{4}$ " Radius Except as Shown.
- 4. Reference PCB4-3LP10

Est Weight: 4,000 Lbs

Phoenix  
Precast  
Products

10' Portable  
Concrete Barrier

P/N: TCB-10