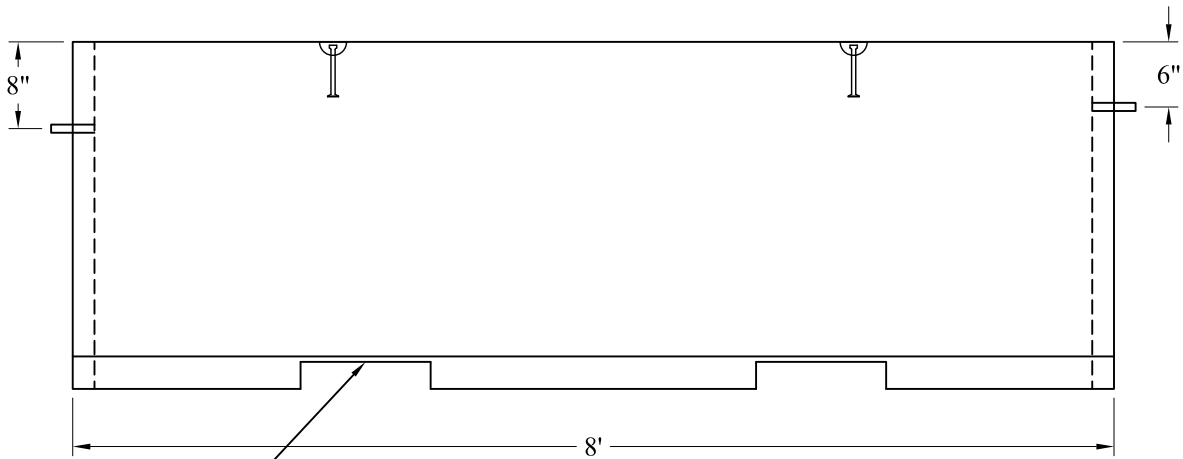
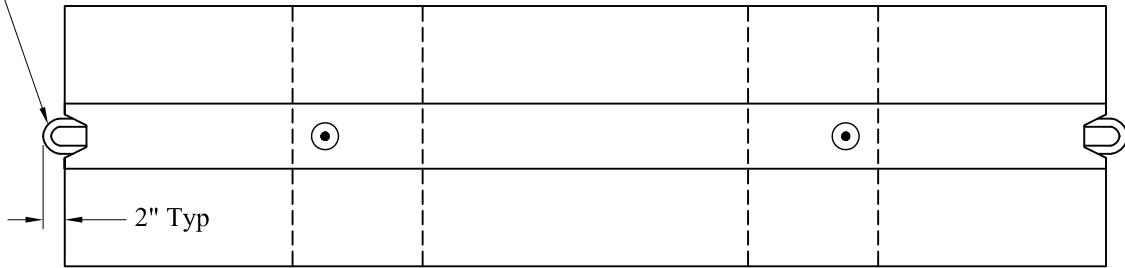


#6 Rebar Typ 2X



Fork Lift Pockets Typ 2X

Est Weight: 3,200 Lbs

General Notes

- 1. Concrete: f'c = 4,000 psi @ 28 Days Minimum.
- 2. Reinforcing Steel Conforms to Latest ASTM Specification: ASTM-A615 Grade 60 Black Deformed Bars

Phoenix
Precast
Products

8' Portable
Concrete Barrier

P/N: TCB-8

77 Regional Drive

Concord, NH 03301

Phoenix Precast Products

Phoenix Precast Products