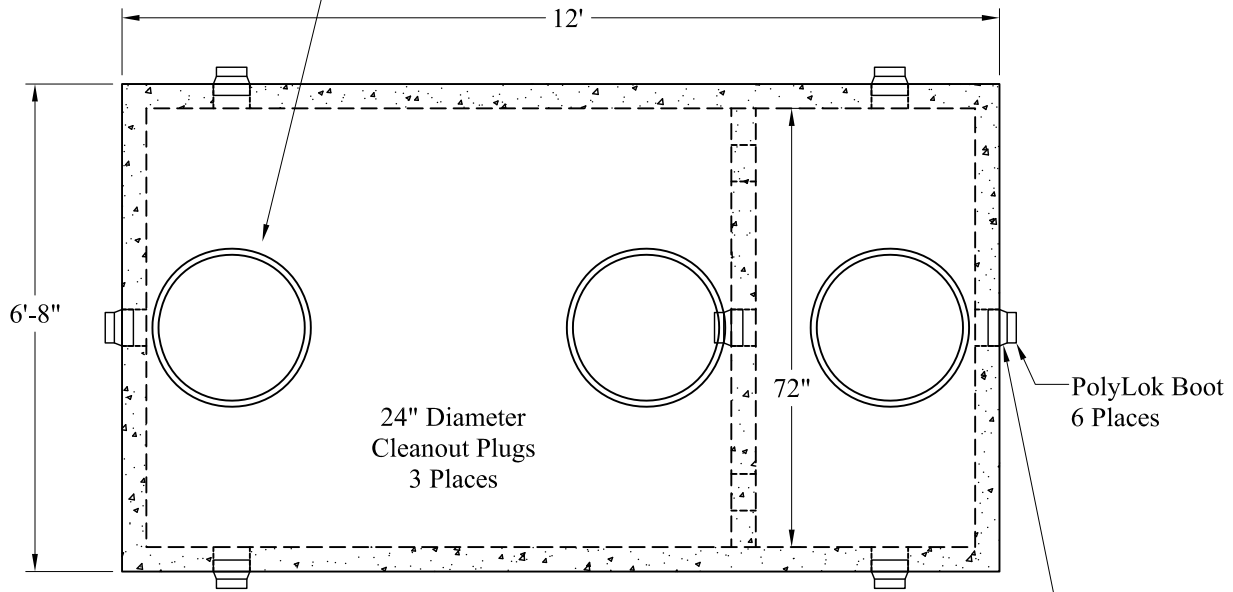


1-800-639-2199

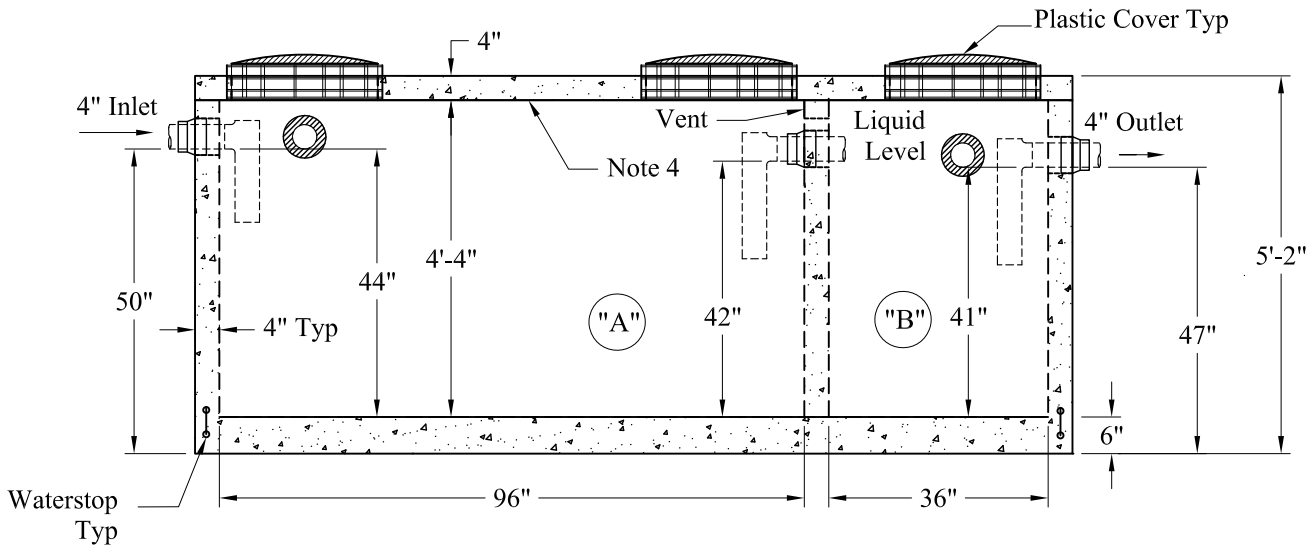
Fax (603) 224-2927

Tanks\Compartment2 Comp\1250-500 LD 2-Comp Top Seam

Standard Cover Configuration
Is (3) 24" Dia Plastic Risers
Cast In, With Plastic Covers



NOTE: A Pipe Bushing Will Be Required
On All Boots with Pipes Less Than 4"



"A" Liquid Level = 360 Gals/VF(30Gals/In)

"B" Liquid Level = 135 Gals/VF(11Gals/In)

"A" = 1,260 Gals

"B" = 472 Gals

Total = 1,732 Gals

Est. Weights:

Top Slab: 3,900 Lbs

Base: 14,900 Lbs

Total: 18,800 Lbs

General Notes

1. Steel Reinforcement Conforms to Latest ASTM Specifications: ASTM-A615 Grade 60 Rebar
2. Concrete: $f_c = 4,000$ psi @ 28 Days Minimum
3. Flexible Sleeves Used On All Pipe Openings
4. Butyl Rubber Joint Sealant Provided
5. Internal PVC Baffles Available
- Inlet: Shall Penetrate at Least 9" Below the Liquid Level, But Not Deeper Than the Outlet Baffle.
- Outlet: Shall Extend Below the Surface of the Liquid Equal to 40% of the Liquid Depth (16").
6. LD Tanks: 3' Cover Max, Non-Traffic

Phoenix
Precast
Products

1,250/500 Gallon
LD 2 Compartment
Top Seam Tank

P/N: ST-1250/500MLD

Phoenix Precast Products

Phoenix Precast Products