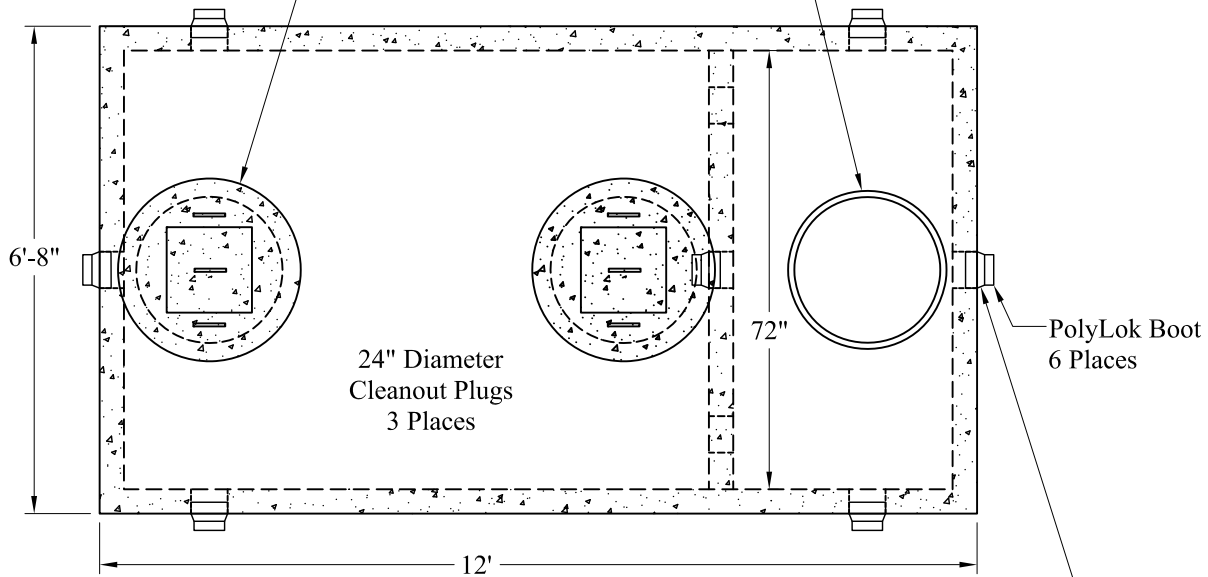
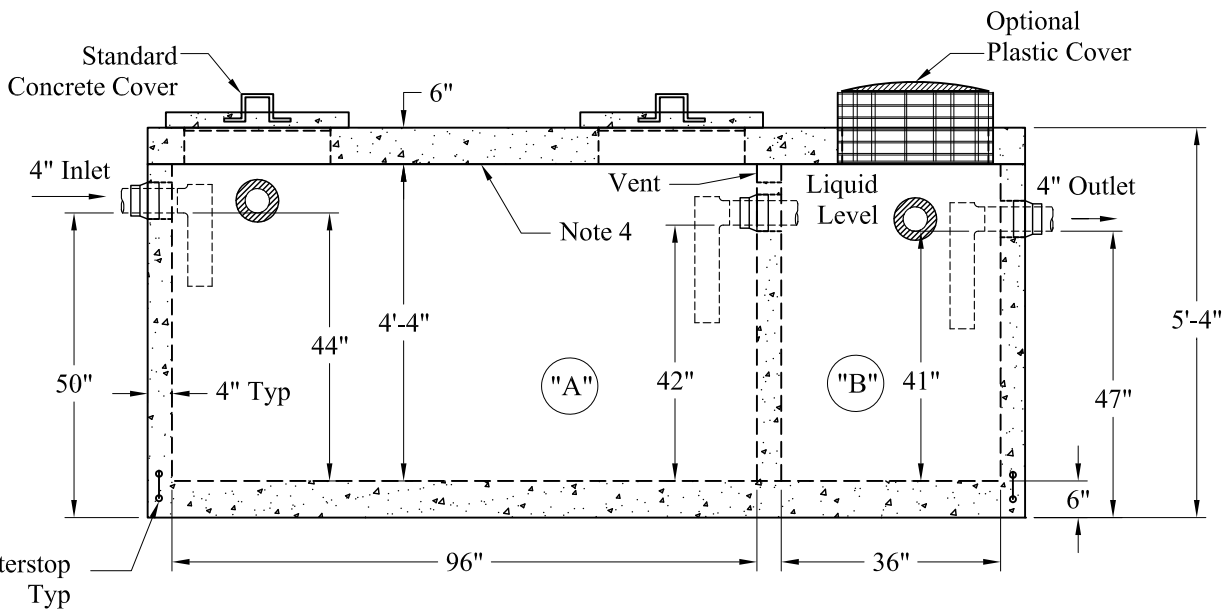


Standard Cover Configuration
Is (3) 24" Dia Concrete Covers

Optional Cover Configuration
Is (3) 24" Dia Plastic Risers
Cast In, With Plastic Covers



NOTE: A Pipe Bushing Will Be Required
On All Boots with Pipes Less Than 4"



General Notes

- Steel Reinforcement Conforms to Latest ASTM Specifications: ASTM-A615 Grade 60 Rebar
- Concrete: $f_c = 4,000$ psi @ 28 Days Minimum
- Flexible Sleeves Used On All Pipe Openings
- Butyl Rubber Joint Sealant Provided
- Internal PVC Baffles Available
- Inlet: Shall Penetrate at Least 9" Below the Liquid Level, But Not Deeper Than the Outlet Baffle.
- Outlet: Shall Extend Below the Surface of the Liquid Equal to 40% of the Liquid Depth (16").
- HD Tanks: 3' - 6' Cover Max, Non-Traffic

"A" Liquid Level = 360 Gals/VF(30Gals/In)

"B" Liquid Level = 135 Gals/VF(11Gals/In)

"A" = 1,260 Gals

"B" = 472 Gals

Total = 1,732 Gals

Est. Weights:

Top Slab: 5,240 Lbs

Base: 14,900 Lbs

Total: 20,140 Lbs

Phoenix
Precast
Products

1,250/500 Gallon
HD 2 Compartment
Top Seam Tank

P/N: ST-1250/500MHD