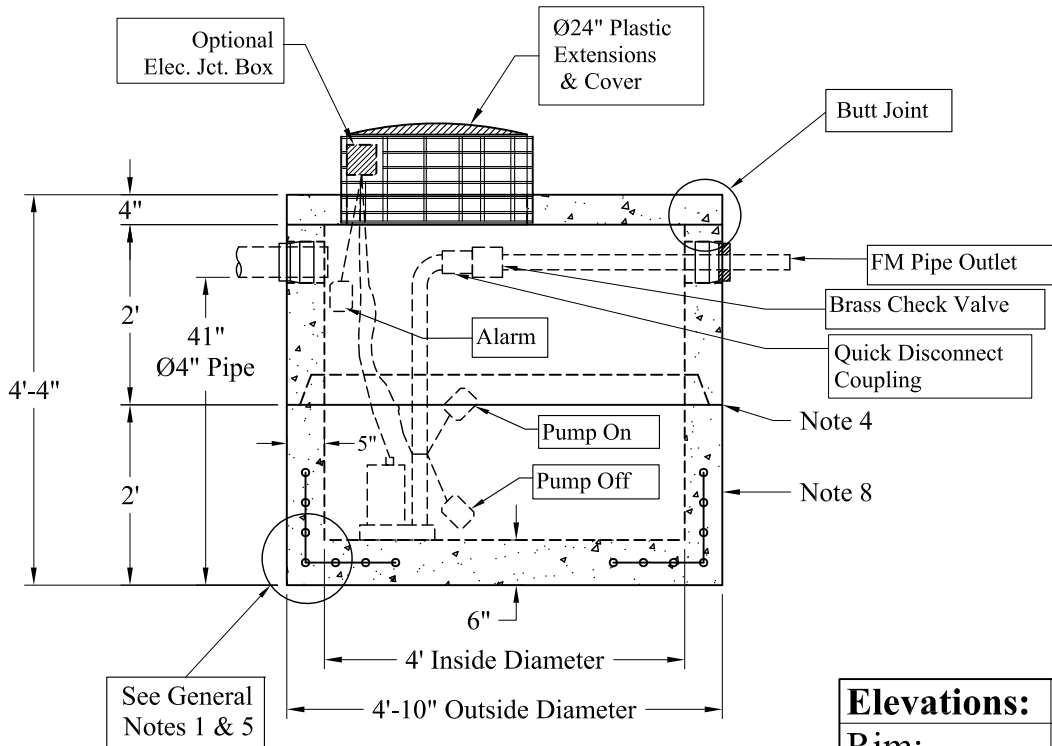
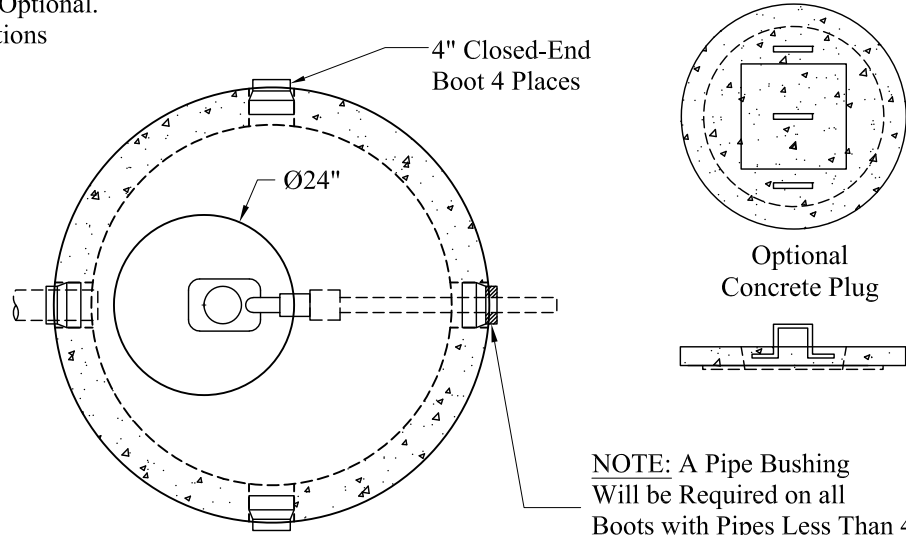


Pumps and Related Accessories are Optional.
Junction Box and Electrical Connections
Installed by Others



See General Notes 1 & 5

Elevations:	
Rim:	
Invert In:	
Alarm On:	
Pump On:	
Pump Off:	
Inside Floor:	

Est. Weight:

Top Slab:	850 Lbs
2' Riser:	1,760 Lbs
2' Base:	2,800 Lbs
Total:	5,410 Lbs

- General Notes**
- 1.) Reinforcement Steel Conforms To Latest ASTM A 185 Specifications: 0.12 Sq. In. / Lineal Ft. And 0.12 Sq./In. (Both Ways) Base Bottom
 - 2.) Concrete: $f_c = 4,000$ psi @ 28 Days Minimum
 - 3.) Manhole Design:
Conforms To The Latest ASTM C478 Specifications For "Precast Reinforced Concrete Manhole Sections".
 - 4.) Butyl Rubber Joint Sealant Provided
 - 5.) One Pour Monolithic Base Section
 - 6.) Liquid Capacity: 94 Gallons/VF (8 Gallons/Inch)
 - 7.) Flexible Boots Provided
 - 8.) Exterior Coating Available

Phoenix Precast Products	4' Diameter LD 250 Gallon Pump Chamber
	P/N: PC-250