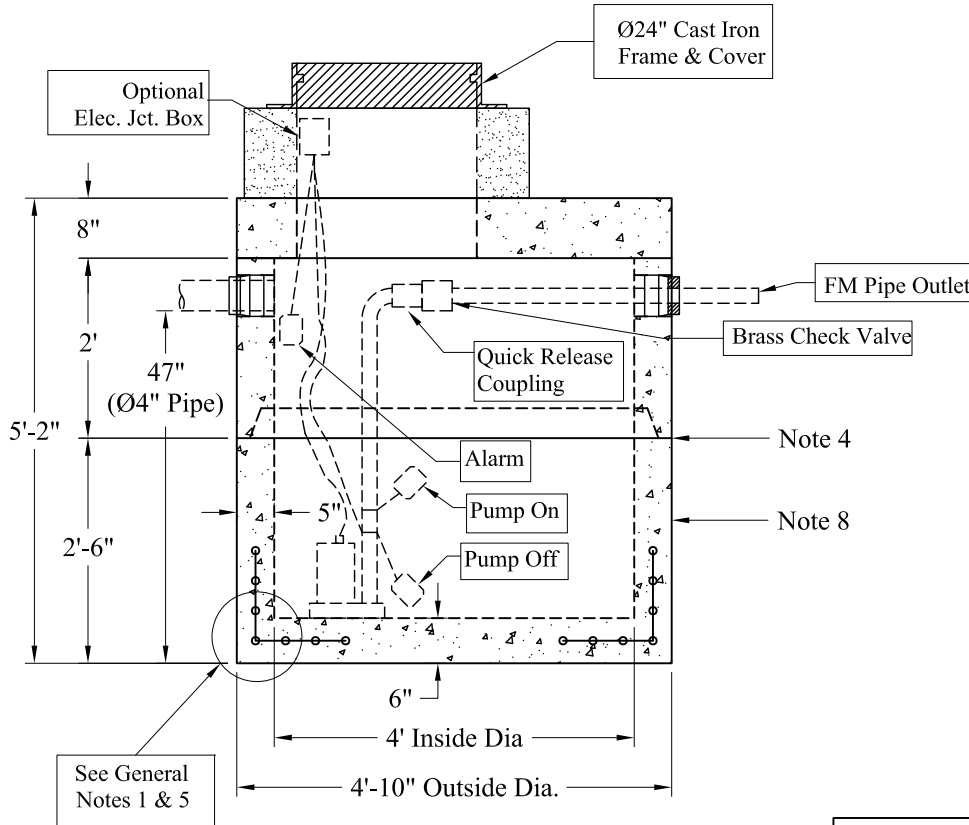
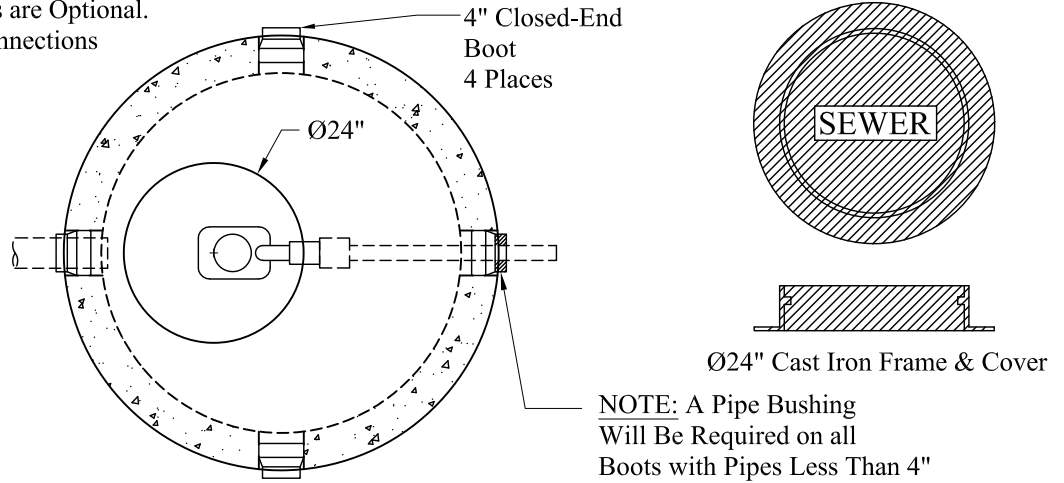


Pumps and Related Accessories are Optional.
Junction Box and Electrical Connections
Installed by Others



See General Notes 1 & 5

Elevations:	
Rim:	
Invert In:	
Alarm On:	
Pump On:	
Pump Off:	
Inside Floor:	

General Notes

- 1.) Reinforcement Steel Conforms To Latest ASTM A 185 Specifications: 0.12 Sq. In. / Lineal Ft. And 0.12 Sq./In. (Both Ways) Base Bottom
- 2.) Concrete: $f_c = 4,000$ psi @ 28 Days Minimum
- 3.) Manhole Design: Conforms To The Latest ASTM C478 Specifications For "Precast Reinforced Concrete Manhole Sections". Design Loading: AASHTO-HS20-44
- 4.) Butyl Rubber Joint Sealant Provided
- 5.) One Pour Monolithic Base Section
- 6.) Liquid Capacity: 94 Gallons/VF (8 Gallons/Inch)
- 7.) Flexible Boots Provided
- 8.) Exterior Coating Available

Est. Weight:

Top Slab:	2,360 Lbs
2' Riser:	1,760 Lbs
2'-6" Base:	3,250 Lbs
Total:	7,370 Lbs

<p>Phoenix Precast Products</p>	<p>4' Diameter HS-20 300 Gallon Pump Chamber</p>
	<p>P/N: PC-300HS20</p>