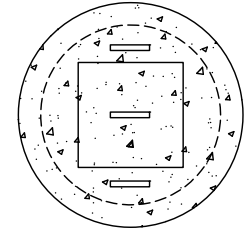
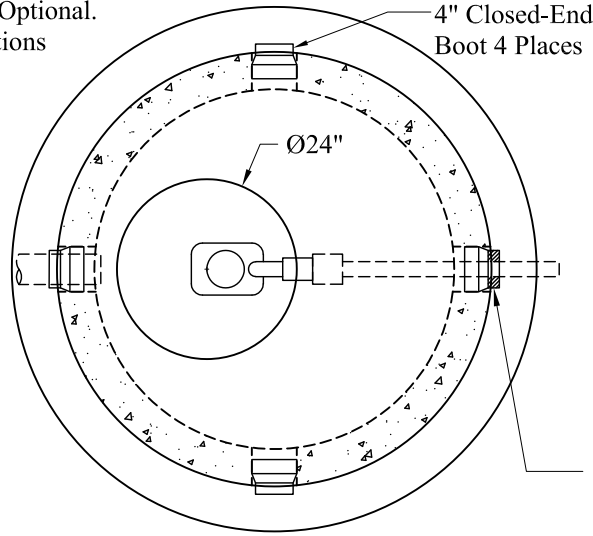
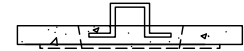


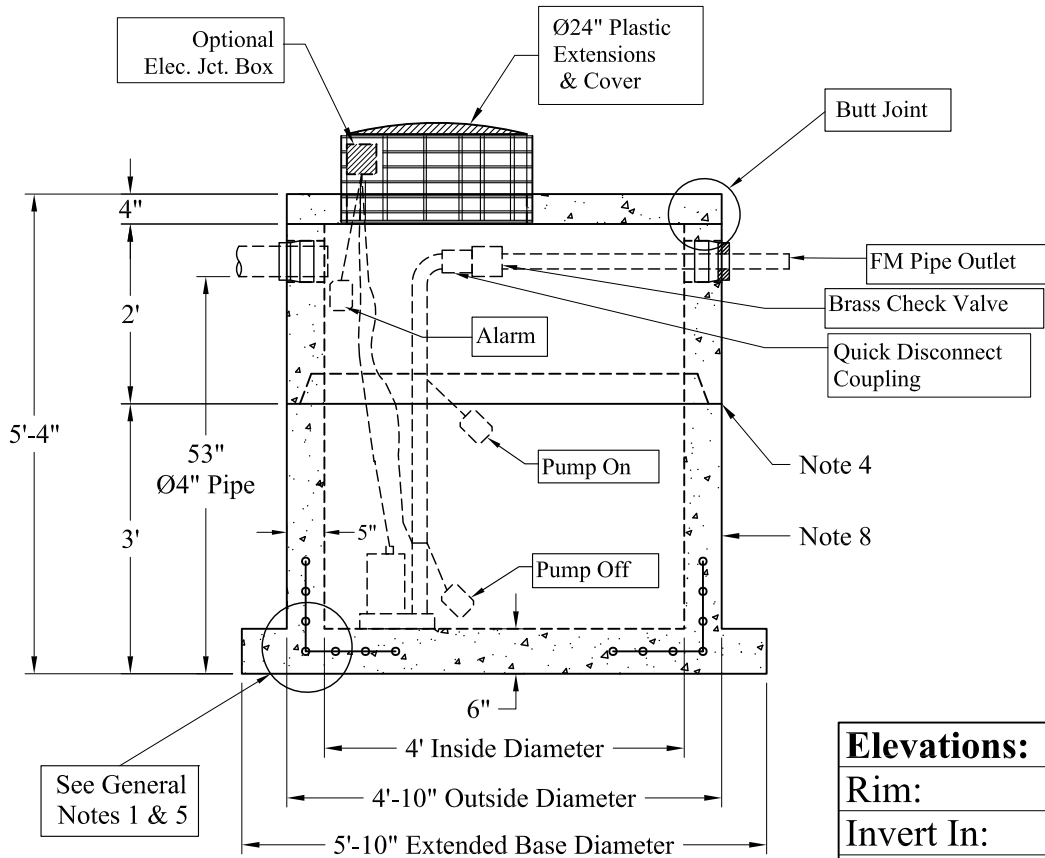
Pumps and Related Accessories are Optional.  
Junction Box and Electrical Connections  
Installed by Others



Optional  
Concrete Plug



NOTE: A Pipe Bushing  
Will be Required on all  
Boots with Pipes Less Than 4"



See General  
Notes 1 & 5

| Elevations:   |  |
|---------------|--|
| Rim:          |  |
| Invert In:    |  |
| Alarm On:     |  |
| Pump On:      |  |
| Pump Off:     |  |
| Inside Floor: |  |

**General Notes**

- 1.) Reinforcement Steel Conforms To Latest ASTM A 185 Specifications: 0.12 Sq. In. / Lineal Ft. And 0.12 Sq./In. (Both Ways) Base Bottom
- 2.) Concrete:  $f_c = 4,000$  psi @ 28 Days Minimum
- 3.) Manhole Design:  
Conforms To The Latest ASTM C478 Specifications For "Precast Reinforced Concrete Manhole Sections".
- 4.) Butyl Rubber Joint Sealant Provided
- 5.) One Pour Monolithic Base Section
- 6.) Liquid Capacity: 94 Gallons/VF (8 Gallons/Inch)
- 7.) Flexible Boots Provided
- 8.) Exterior Coating Available

**Est. Weight:**

|           |           |
|-----------|-----------|
| Top Slab: | 850 Lbs   |
| 2' Riser: | 1,760 Lbs |
| 3' Base:  | 4,320 Lbs |
| Total:    | 6,930 Lbs |

Phoenix  
Precast  
Products

4' Diameter LD  
350 Gallon Pump  
Chamber Ext Base

P/N: PC-350LDXB