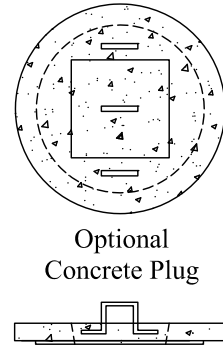
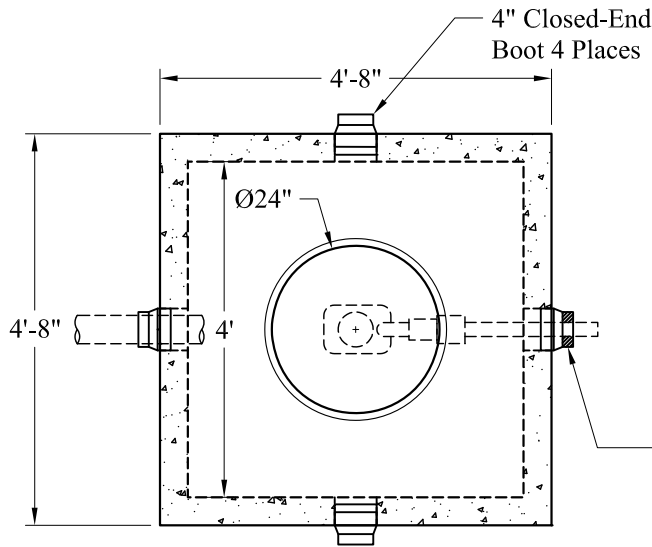


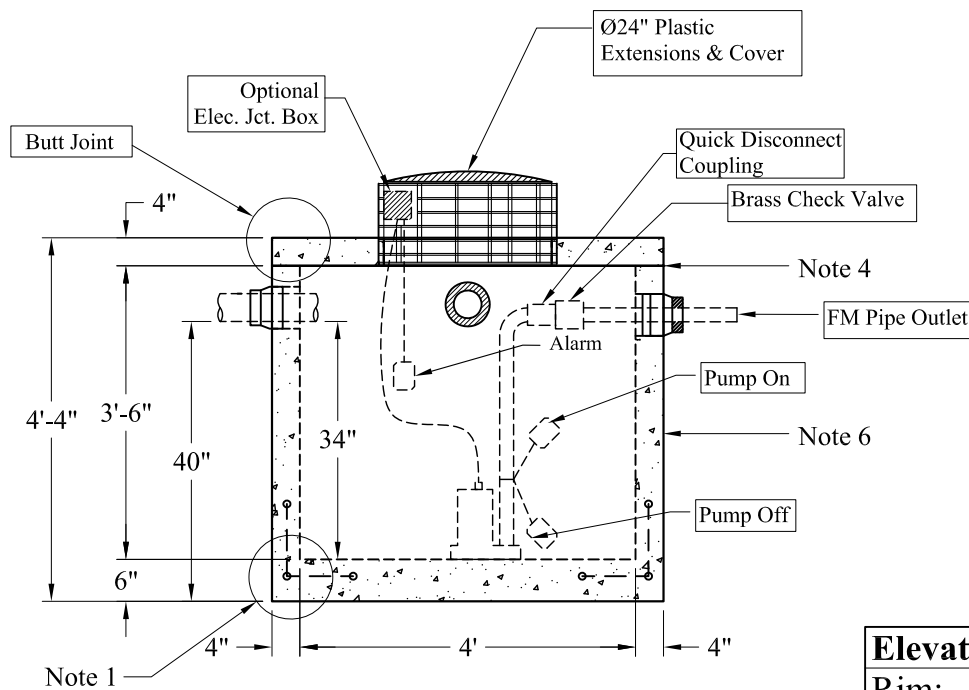
Pumps and Related Accessories are Optional.
Junction Box And Electrical Connections
Installed By Others



Pump Stations (Standard) 4 ft x 4 ft 340 Gallon Pump Pit LD

Phoenix Precast Products

Phoenix Precast Products



Elevations:	
Rim:	
Invert In:	
Alarm On:	
Pump On:	
Pump Off:	
Inside Floor:	

General Notes

- 1.) Reinforcement Steel Conforms To Latest ASTM A 615 Specifications, Grade 60
- 2.) Concrete: $f_c = 5,000$ psi @ 28 Days Minimum
- 3.) Flexible Boots Provided
- 4.) Butyl Rubber Joint Sealant Provided
- 5.) Liquid Capacity: 120 Gallons/VF (10 Gallons/Inch)
- 6.) Exterior Coating Available
- 7.) LD Tanks: 3' Cover, Non-Traffic

Est. Weight:

Top Slab:	900 Lbs
Base:	4,550 Lbs
Total:	5,450 Lbs

Phoenix
Precast
Products

340 Gallon LD
(4' x 4' x 3'-6")
Pump Chamber

P/N: PC-340SQLD