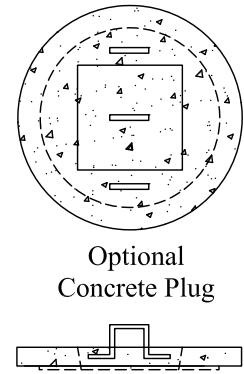
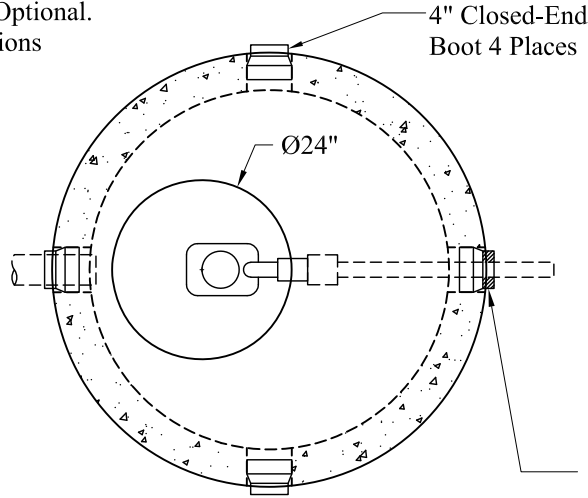
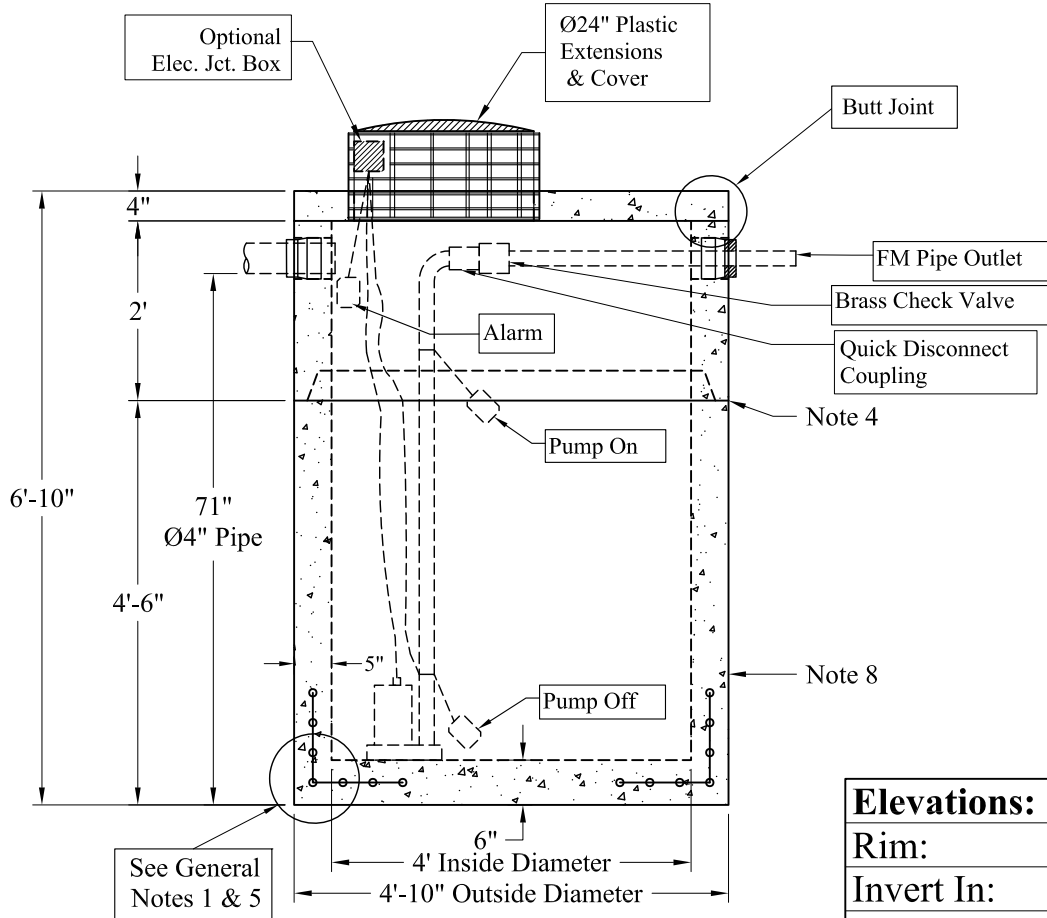


Pumps and Related Accessories are Optional.
Junction Box and Electrical Connections
Installed by Others



NOTE: A Pipe Bushing Will be Required on all Boots with Pipes Less Than 4"



| Elevations: | |
|---------------|--|
| Rim: | |
| Invert In: | |
| Alarm On: | |
| Pump On: | |
| Pump Off: | |
| Inside Floor: | |

| Est. Weight: | |
|--------------|-----------|
| Top Slab: | 850 Lbs |
| 2' Riser: | 1,760 Lbs |
| 4'-6" Base: | 4,960 Lbs |
| Total: | 7,570 Lbs |

General Notes

- 1.) Reinforcement Steel Conforms To Latest ASTM A 185 Specifications: 0.12 Sq. In. / Lineal Ft. And 0.12 Sq./In. (Both Ways) Base Bottom
- 2.) Concrete: $f_c = 4,000$ psi @ 28 Days Minimum
- 3.) Manhole Design:
Conforms To The Latest ASTM C478 Specifications For "Precast Reinforced Concrete Manhole Sections".
- 4.) Butyl Rubber Joint Sealant Provided
- 5.) One Pour Monolithic Base Section
- 6.) Liquid Capacity: 94 Gallons/VF (8 Gallons/Inch)
- 7.) Flexible Boots Provided
- 8.) Exterior Coating Available

| | |
|--------------------------------|--|
| Phoenix Precast Products | 4' Diameter LD 500 Gallon Pump Chamber |
| P/N: PC-500 | |