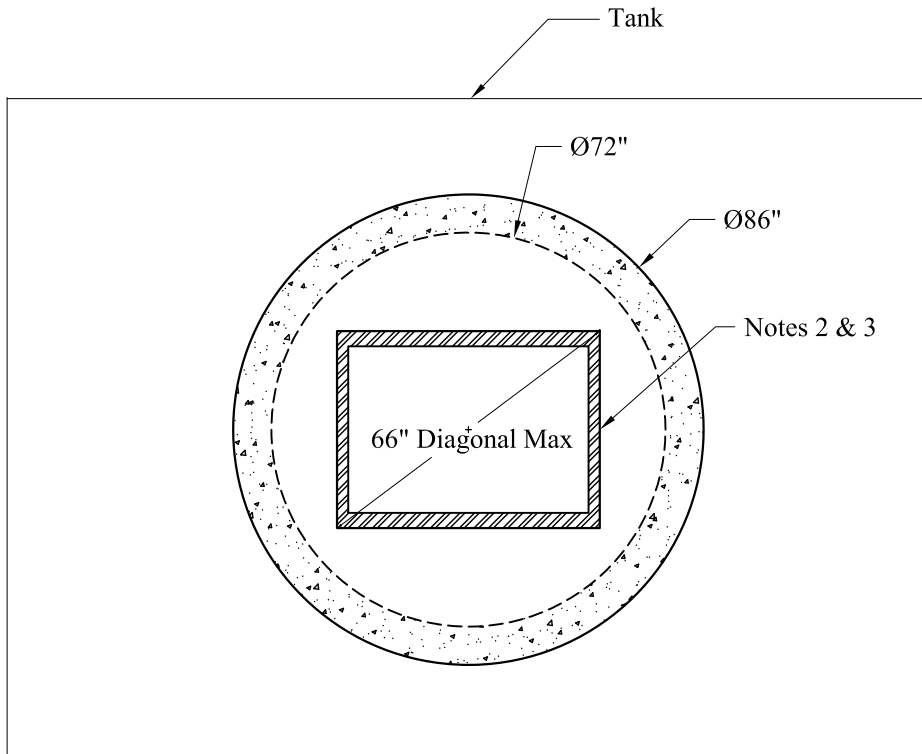
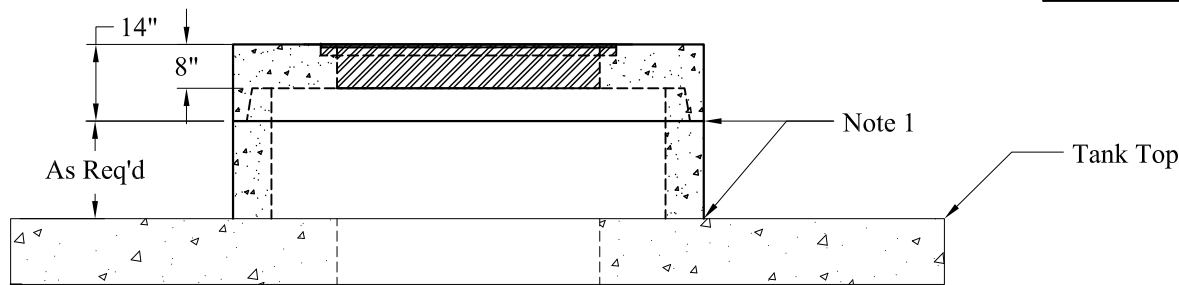


1. Butyl Rubber Joint Sealant Provided
2. Information Required for Cast-In Hatches:
 - a. Hatch Size, Style, and Loading Requirements
 - b. Hinge Location
 - c. Drain Location
3. See Phoenix Hatch Sizing Chart Shown Below



6' Ø, Maximum Diagonal = 66"				
	Light Duty		Heavy Duty	
Clear Opening	Trough	Angle	Trough	Angle
24" x 24"	45"	43"	48"	47"
24" x 30"	49"	47"	53"	52"
24" x 36"	54"	52"	58"	57"
24" x 42"	59"	57"	63"	62"
24" x 48"	64"	62"	N/A	65"
30" x 30"	53"	51"	57"	56"
30" x 36"	58"	56"	62"	60"
30" x 42"	62"	60"	66"	64"
30" x 48"	66"	65"	N/A	N/A
36" x 36"	61"	59"	65"	64"
36" x 42"	66"	64"	N/A	N/A



Phoenix
Precast
Products

6' Ø Tank Riser
Hatch Selection

P/N: Custom As Required

Phoenix Precast Products

Phoenix Precast Products