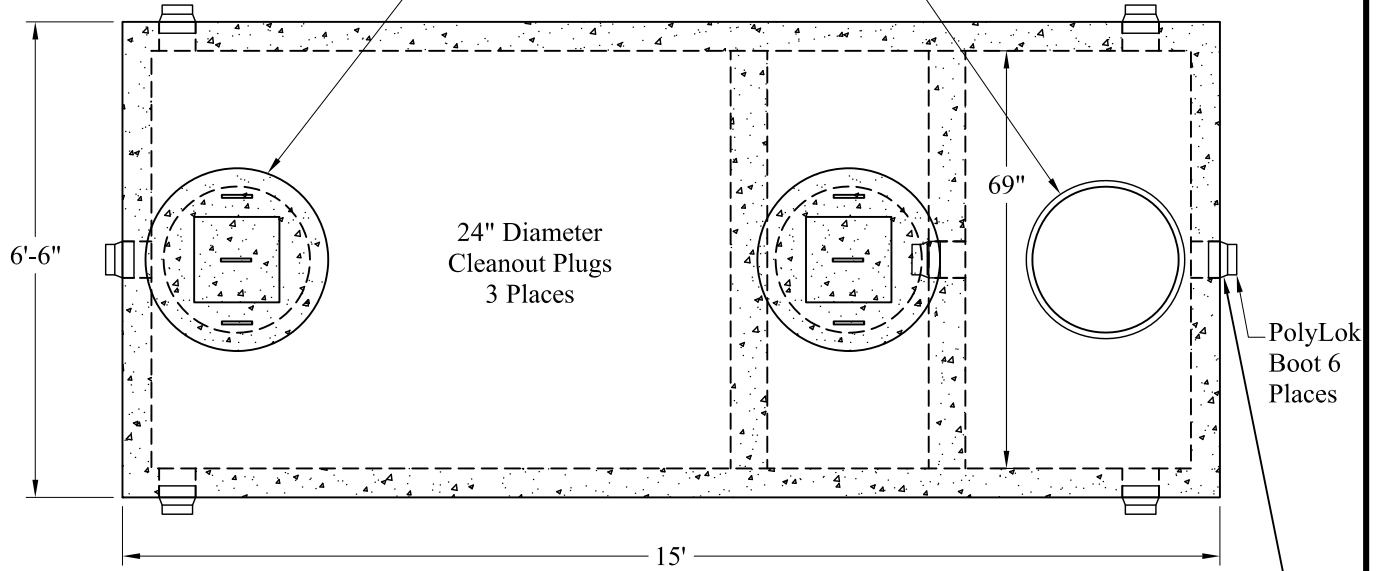
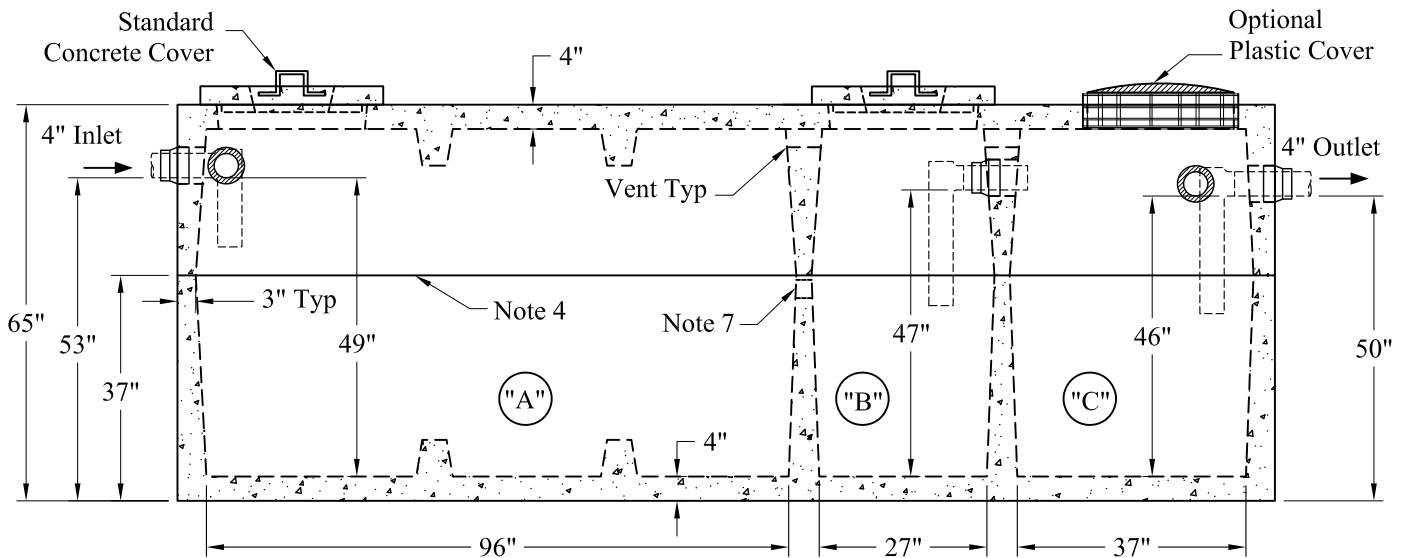


Standard Cover Configuration
Is (3) 24" Dia Concrete Covers

Optional Cover Configuration
Is (3) 24" Dia Plastic Risers
Cast In, With Plastic Covers



NOTE: A Pipe Bushing Will Be Required
On All Boots with Pipes Less Than 4"



"A" Liquid Level = 355 Gals/VF (30 Gals/In)

"B" Liquid Level = 105 Gals/VF (9 Gals/In)

"C" Liquid Level = 143 Gals/VF (12 Gals/In)

"A" = 1,391 Gals

"B" = 411 Gals

"C" = 548 Gals

Total = 2,350 Gals

Est Weight:

Upper: 10,270 Lbs

Lower: 12,500 Lbs

Total: 22,770 Lbs

General Notes

1. Steel Reinforcement Conforms to Latest ASTM Specifications: ASTM-A615 Grade 60 Rebar
 2. Concrete: $f_c = 4,000$ psi @ 28 Days Minimum
 3. Flexible Sleeves Used On All Pipe Openings
 4. Butyl Rubber Joint Sealant Provided
 5. Internal PVC Baffles Available
- Inlet: Shall Penetrate at Least 9" Below the Liquid Level, But Not Deeper Than the Outlet Baffle.
- Outlet: Shall Extend Below the Surface of the Liquid Equal to 40% of the Liquid Depth (19").
6. HD Tanks: 3' - 6' Cover Max, Non-Traffic
 7. Flow-Through Opening Between Compartments A & B

Phoenix
Precast
Products

Medium HD
3 Compartment Tank

P/N: ST-1330/380/500HD

Concord, NH 03301