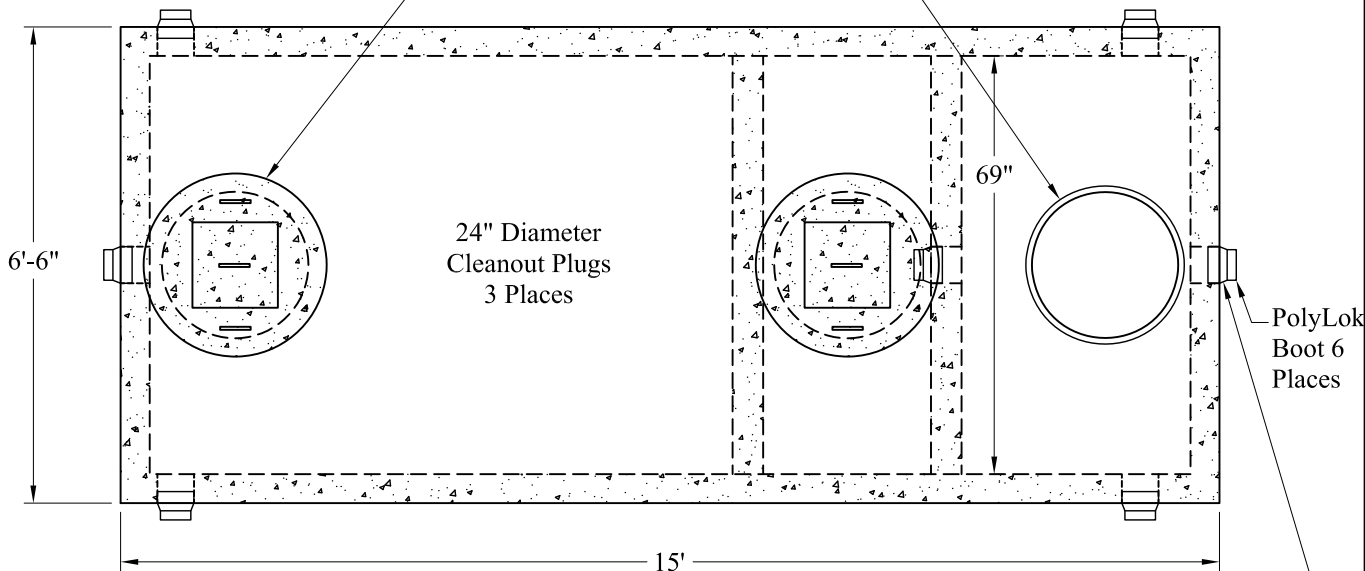
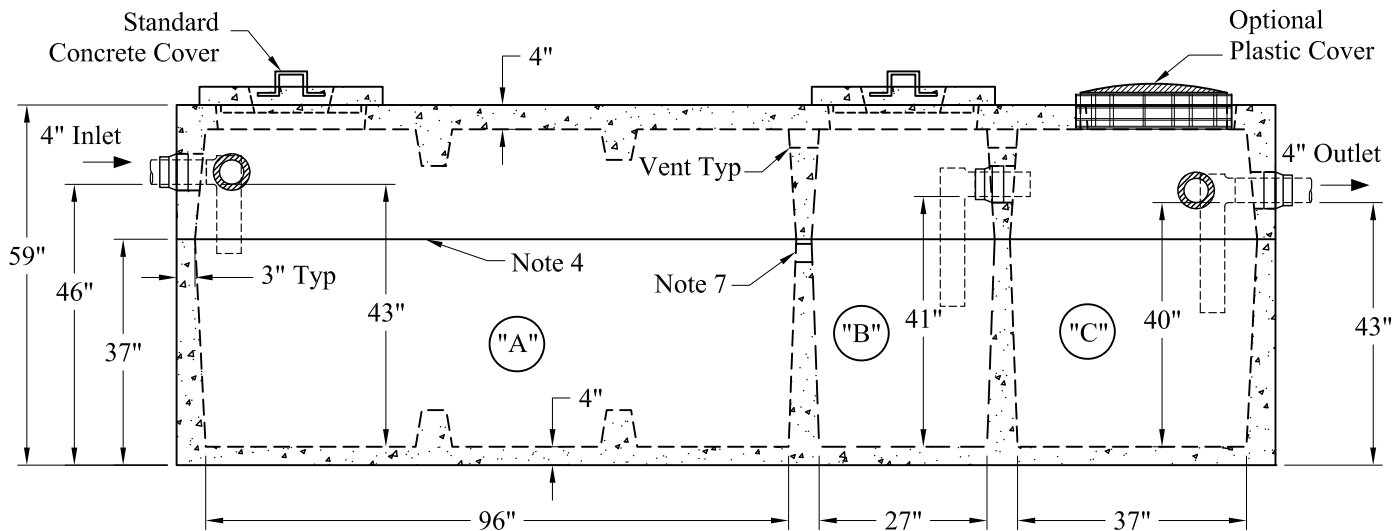


Standard Cover Configuration
Is (3) 24" Dia Concrete Covers

Optional Cover Configuration
Is (3) 24" Dia Plastic Risers
Cast In, With Plastic Covers



NOTE: A Pipe Bushing Will Be Required
On All Boots with Pipes Less Than 4"



General Notes

1. Steel Reinforcement Conforms to Latest ASTM Specifications: ASTM-A615 Grade 60 Rebar
2. Concrete: $f_c = 4,000$ psi @ 28 Days Minimum
3. Flexible Sleeves Used On All Pipe Openings
4. Butyl Rubber Joint Sealant Provided
5. Internal PVC Baffles Available
- Inlet: Shall Penetrate at Least 9" Below the Liquid Level, But Not Deeper Than the Outlet Baffle.
- Outlet: Shall Extend Below the Surface of the Liquid Equal to 40% of the Liquid Depth (17").
6. LD Tanks: 3' Cover Max, Non-Traffic
7. Flow-Through Opening Between Compartments A & B

"A" Liquid Level = 355 Gals/VF (30 Gals/In)
 "B" Liquid Level = 105 Gals/VF (9 Gals/In)
 "C" Liquid Level = 143 Gals/VF (12 Gals/In)
 "A" = 1,214 Gals
 "B" = 359 Gals
 "C" = 476 Gals
 Total = 2,049 Gals

Est Weight:
 Top: 9,750 Lbs
 Base: 12,500 Lbs
 Total: 22,250 Lbs

Phoenix
 Precast
 Products

Small LD
 3 Compartment Tank

P/N: ST-1200/340/450LD

Concord, NH 03301