

Phoenix Precast Products

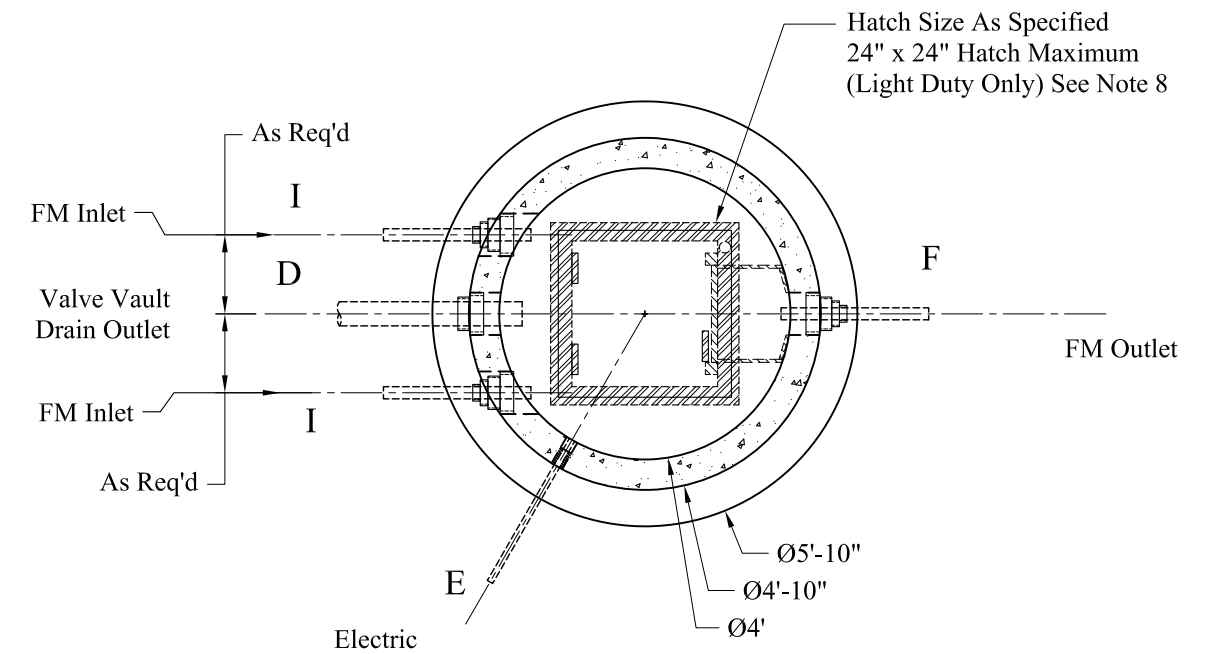
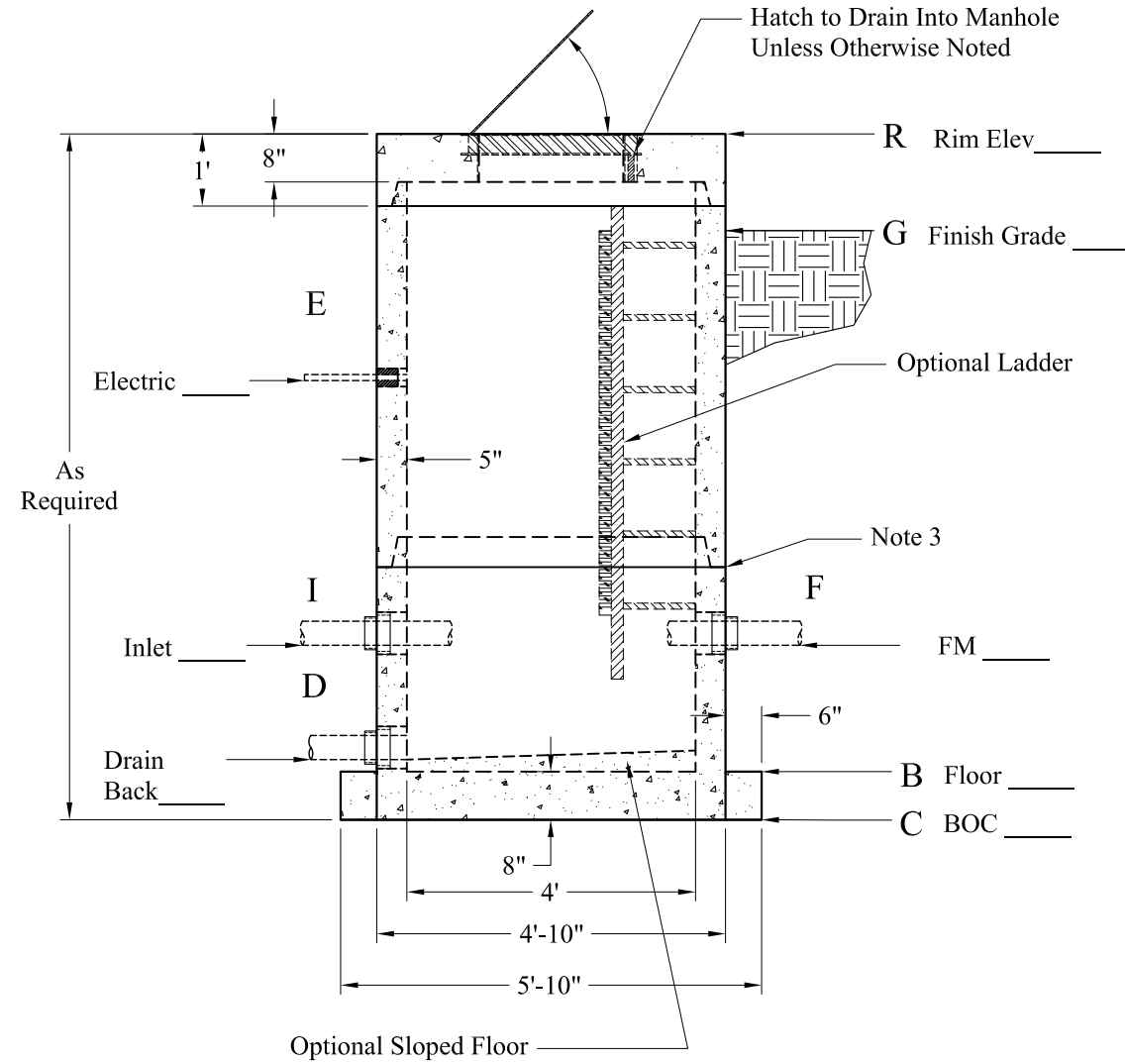
Phoenix Precast Products

Pipe Chart			
	Pipe	Pipe OD	Connection
E			
I			
F			
D			
B			

Elevation Chart		
	Description	Elevation
R	Rim	
G	Finish Grade	
E	Electric Connection(s)	
I	Inlet	
F	Force Main Outlet	
D	Drain Back To Wet Well	
B	Inside Bottom Floor	
C	Outside Bottom of Concrete	

- 1.) Steel Reinforcement Conforms To Latest ASTM Specifications:
 ASTM A-615 Grade 60 Black Deformed Bars
 ASTM A-185 Welded Wire Fabric
- 2.) Concrete: $f_c = 5,000$ PSI @ 28 Days Minimum, Type III Cement
- 3.) Butyl Rubber Joint Sealant Conforms to ASTM C-990 and Federal Spec SS-S-210A.
- 4.) Flexible Connection Provided For All Pipe Connections.
- 5.) All Valves, Mounting Hardware, and Related Ancillary Equipment Provided by Others.
- 6.) HS-20 Design Loading Conforms to Latest Specifications ASTM C478, AASHTO M199 Precast Reinforced Concrete Manhole Sections
- 7.) Hatch to Drain Into Structure Unless Otherwise Noted
- 8.) Contact Phoenix for Hatch Requirements Exceeding these Dimensions

- | | |
|---|----------------------------|
| Options: | Est Weights: |
| - LinkSeal Pipe Connections | - Top Slab: 1,970 Lbs |
| - LinkSeal Electrical Connections | - Risers: 865 Lbs/VF |
| - Exterior Damp Proofing/Water Proofing | - Sloped Floor: 560 Lbs |
| - Interior Coatings | - Ext Base Slab: 2,650 Lbs |
| - Interior Fill (Sloped Floor) | |
| - Exterior Joint Wrap | |
| - Aluminum Ladder | |
| - "Ladder-Up" Safety Post | |
| - Safety Net, Safety Grate | |
| - Anti-Floatation Collar | |



Phoenix Precast Products	4' Diameter Valve Vault Extended Base
	P/N: Custom As Required