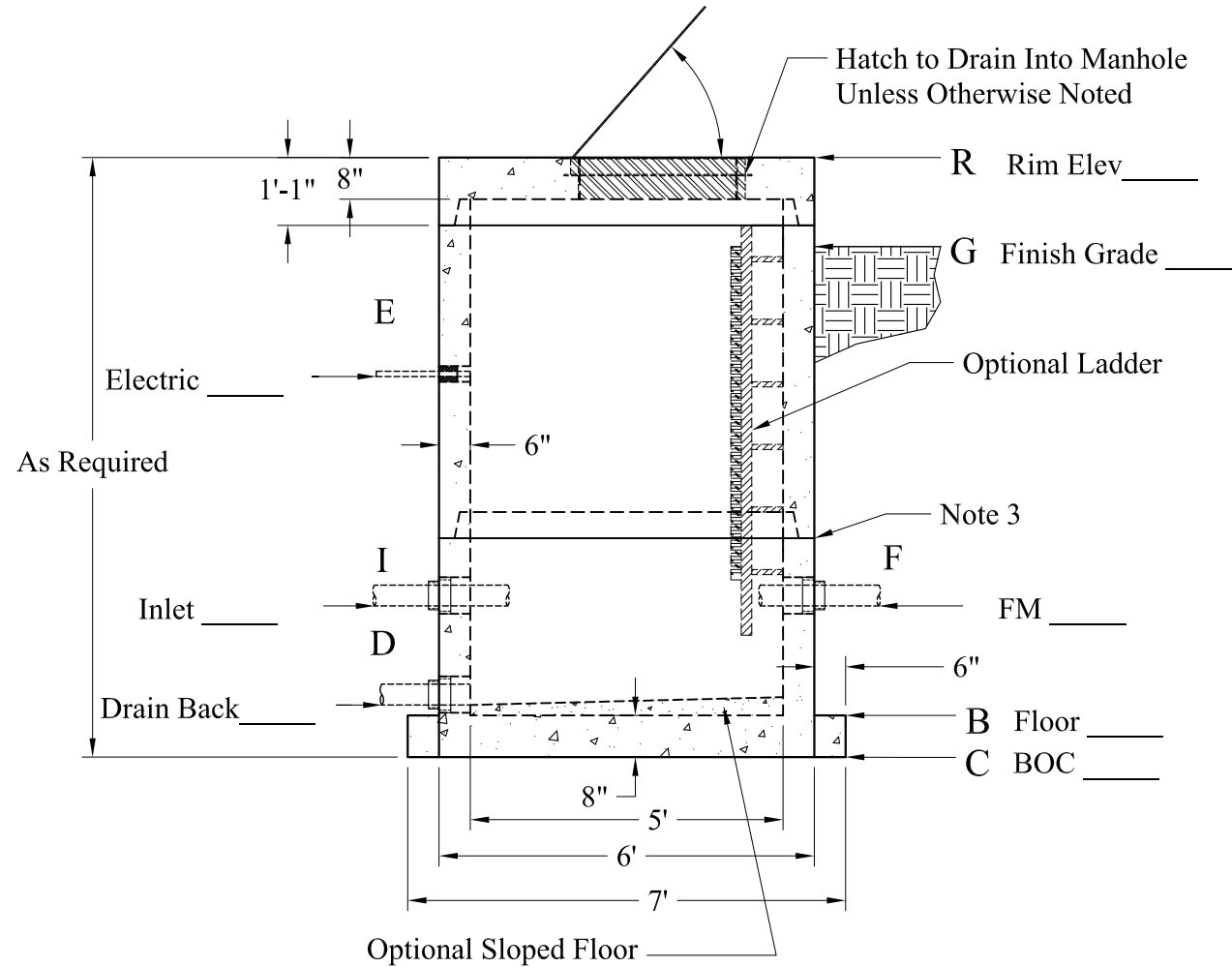


Phoenix Precast Products

Phoenix Precast Products

Pipe Chart		
Pipe	Pipe OD	Connection
E		
I		
F		
D		

Elevation Chart	
Description	Elevation
R Rim	
G Finish Grade	
E Electric Connection(s)	
I Inlet	
F Force Main Outlet	
D Drain Back To Wet Well	
B Inside Bottom Floor	
C Outside Bottom of Concrete	



General Notes

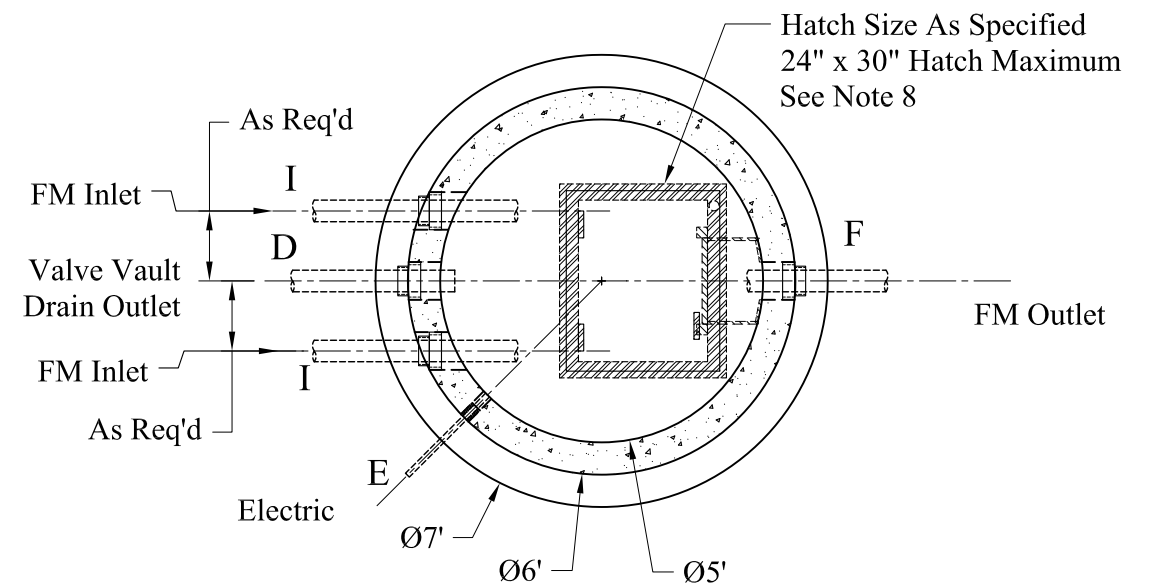
- 1.) Concrete: $f_c = 5,000$ PSI @ 28 Days Minimum, Type III Cement
- 2.) Steel Reinforcement Conforms To Latest ASTM Specifications:
 ASTM A-615 Grade 60 Black Deformed Bars
 ASTM A-185 Welded Wire Fabric
- 3.) Butyl Rubber Joint Sealant Conforms to ASTM C-990 and Federal Spec SS-S-210A.
- 4.) Flexible Connection Provided For All Pipe Connections.
- 5.) All Valves, Mounting Hardware, and Related Ancillary Equipment Provided by Others.
- 6.) HS-20 Design Loading Conforms to Latest Specifications ASTM C478, AASHTO M199 Precast Reinforced Concrete Manhole Sections
- 7.) Hatch to Drain Into Structure Unless Otherwise Noted
- 8.) Contact Phoenix for Hatch Requirements Exceeding these Dimensions

Options:

- LinkSeal Pipe Connections
- LinkSeal Electrical Connections
- Exterior Damp Proofing/Water Proofing
- Interior Coatings
- Interior Fill (Sloped Floor)
- Exterior Joint Wrap
- Aluminum Ladder
- "Ladder-Up" Safety Post
- Safety Net, Safety Grate
- Anti-Flotation Collar

Est Weights:

- Top Slab: 3,040 Lbs
- Risers: 1,280 Lbs/VF
- Sloped Floor: 640 Lbs
- Ext Base Slab: 3,800 Lbs



Phoenix
Precast
Products

5' Diameter
Valve Vault
Extended Base

P/N: Custom As Required