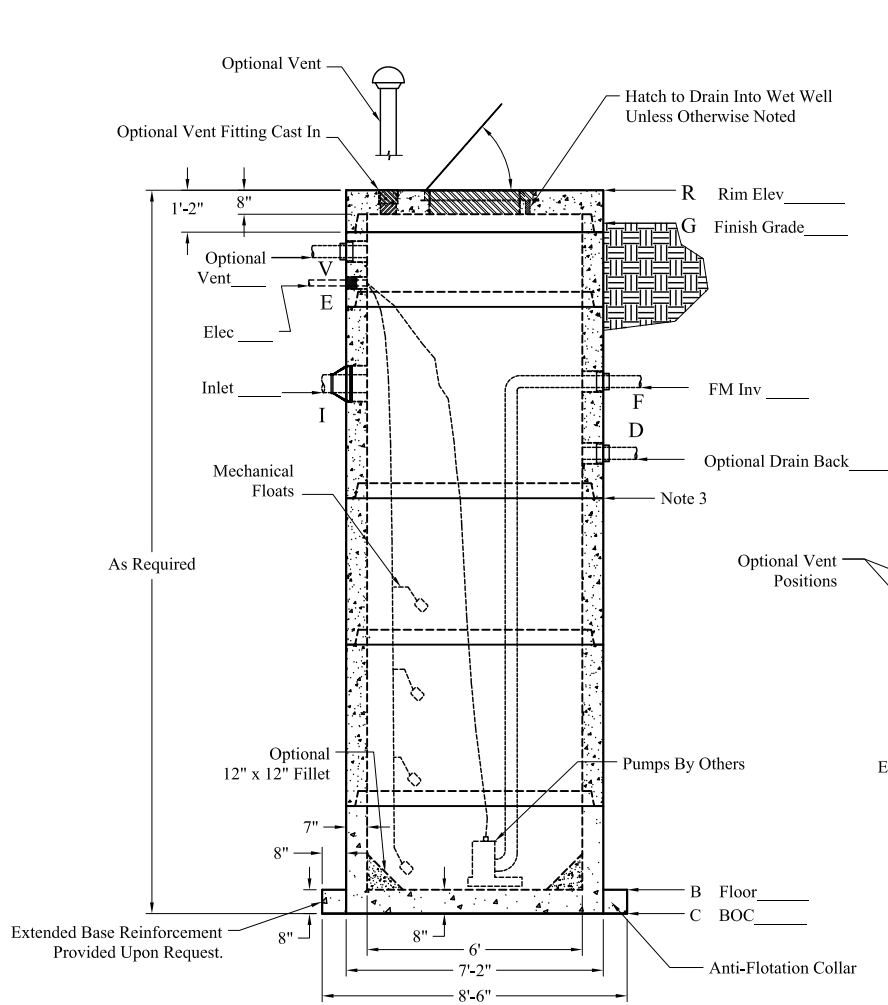
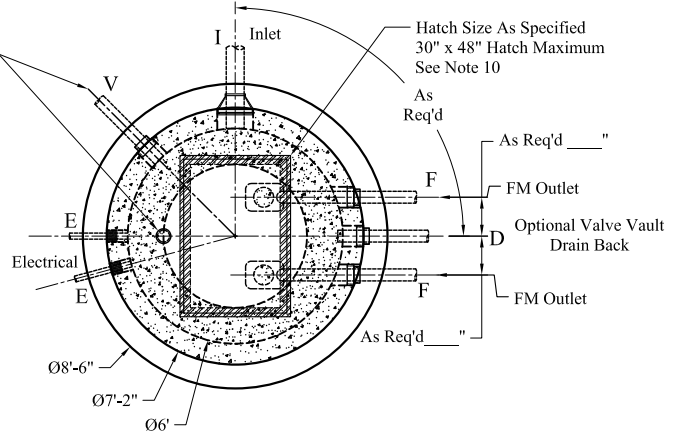


Pipe Chart			
	Pipe	Pipe OD	Connection
V			
E			
I			
F			
D			
B			

Elevation Chart		
	Description	Elevation
R	Rim	
G	Finish Grade	
V	Vent	
E	Electric Connection(s)	
I	Inlet	
F	Force Main Outlet	
D	Drain Back from Valve Vault	
B	Inside Bottom Floor	
C	Outside Bottom of Concrete	



- 1.) Steel Reinforcement Conforms To Latest ASTM Specifications:
ASTM A-615 Grade 60 Black Deformed Bars
ASTM A-185 Welded Wire Fabric
 - 2.) Concrete: $f_c = 5,000$ PSI @ 28 Days Minimum, Type III Cement
 - 3.) Butyl Rubber Joint Sealant Conforms to ASTM C-990 and Federal Spec SS-S-210A.
 - 4.) Flexible Connection Provided For All Pipe Connections.
 - 5.) All Pumps, Mounting Hardware, and Related Ancillary Equipment Provided by Others.
 - 6.) Liquid Capacity = 212 Gallons/Vertical Foot (18 Gallons/Inch)
 - 7.) HS-20 Design Loading Conforms to Latest Specifications ASTM C478, AASHTO M199 Precast Reinforced Concrete Manhole Sections
 - 8.) Hatch to Drain Into Wet Well Unless Otherwise Noted
 - 9.) Based on Structural & Bouyancy Considerations, This Base Design May be Used with Pump Stations up to 30 Feet Deep Without Additional Engineering.
 - 10.) Contact Phoenix for Hatch Requirements Exceeding these Dimensions
- Options:
- LinkSeal Pipe Connections
 - LinkSeal Electrical Connections
 - Exterior Damp Proofing/Water Proofing
 - Interior Coatings
 - Interior Fillet
 - Exterior Joint Wrap
 - Safety Net, Safety Grate
 - Winch Socket
- Est Weights:
- Top Slab: 4,440 Lbs
 - Risers: 1,775 Lbs/VF
 - 1' x 1' x 6'Ø Fillet: 1,200 Lbs
 - Ext Base Slab: 5,625 Lbs



Phoenix Precast Products	6' Diameter Pump Station Wet Well Extended Base
	P/N: Custom As Required