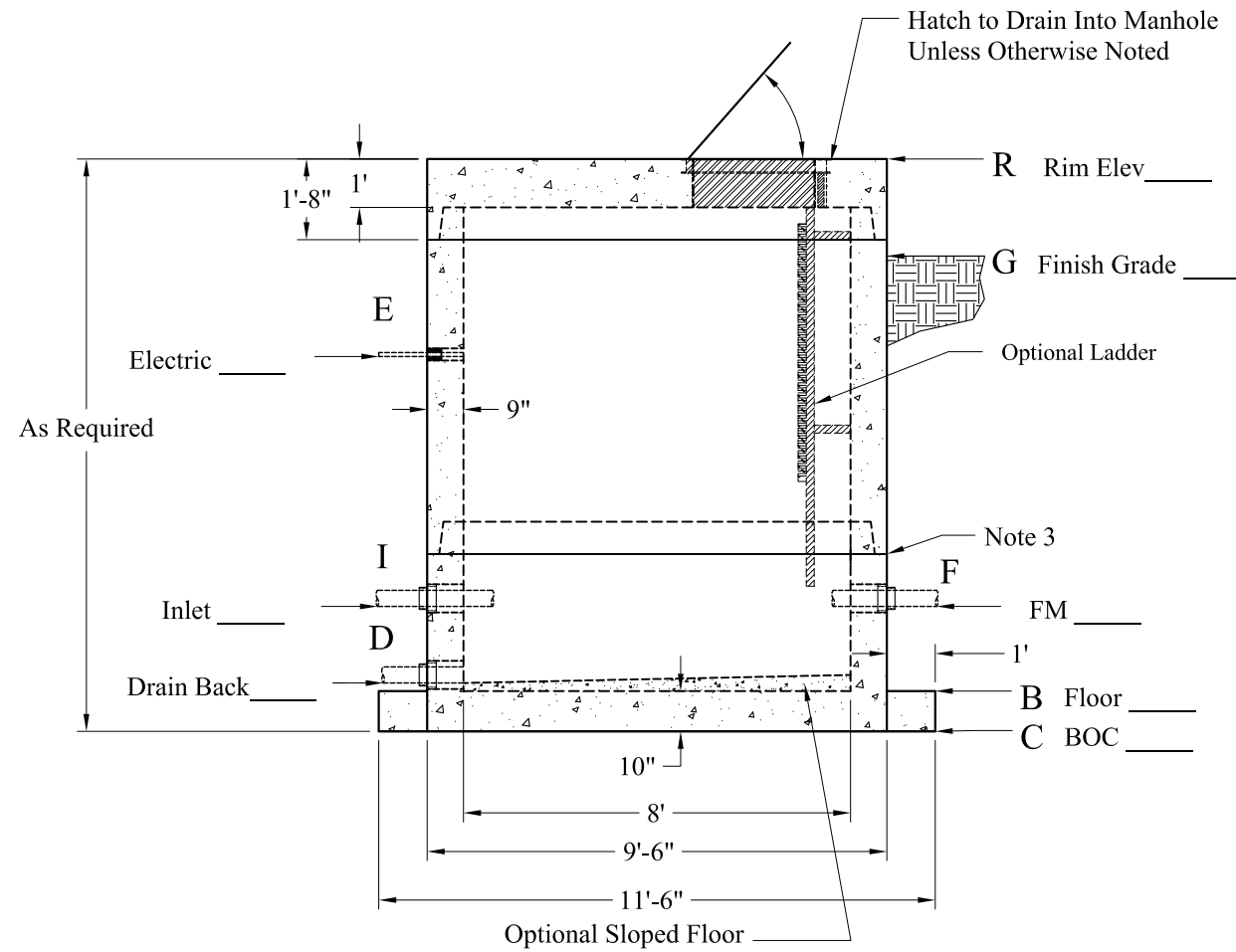


Phoenix Precast Products

Phoenix Precast Products

Pipe Chart			
	Pipe	Pipe OD	Connection
E			
I			
F			
D			
B			

Elevation Chart	
Description	Elevation
R Rim	
G Finish Grade	
E Electric Connection(s)	
I Inlet	
F Force Main Outlet	
D Drain Back To Wet Well	
B Inside Bottom Floor	
C Outside Bottom of Concrete	



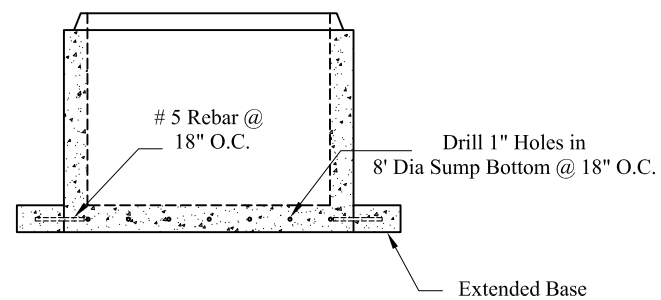
- 1.) Steel Reinforcement Conforms To Latest ASTM Specifications:  
ASTM A-615 Grade 60 Black Deformed Bars  
ASTM A-185 Welded Wire Fabric
- 2.) Concrete:  $f_c = 5,000$  PSI @ 28 Days Minimum, Type III Cement
- 3.) Butyl Rubber Joint Sealant Conforms to ASTM C-990 and Federal Spec SS-S-210A.
- 4.) Flexible Connection Provided For All Pipe Connections.
- 5.) All Valves, Mounting Hardware, and Related Ancillary Equipment Provided by Others.
- 6.) HS-20 Design Loading Conforms to Latest Specifications ASTM C478, AASHTO M199 Precast Reinforced Concrete Manhole Sections
- 7.) Hatch to Drain Into Structure Unless Otherwise Noted
- 8.) Contact Phoenix for Hatch Requirements Exceeding these Dimensions

Options:

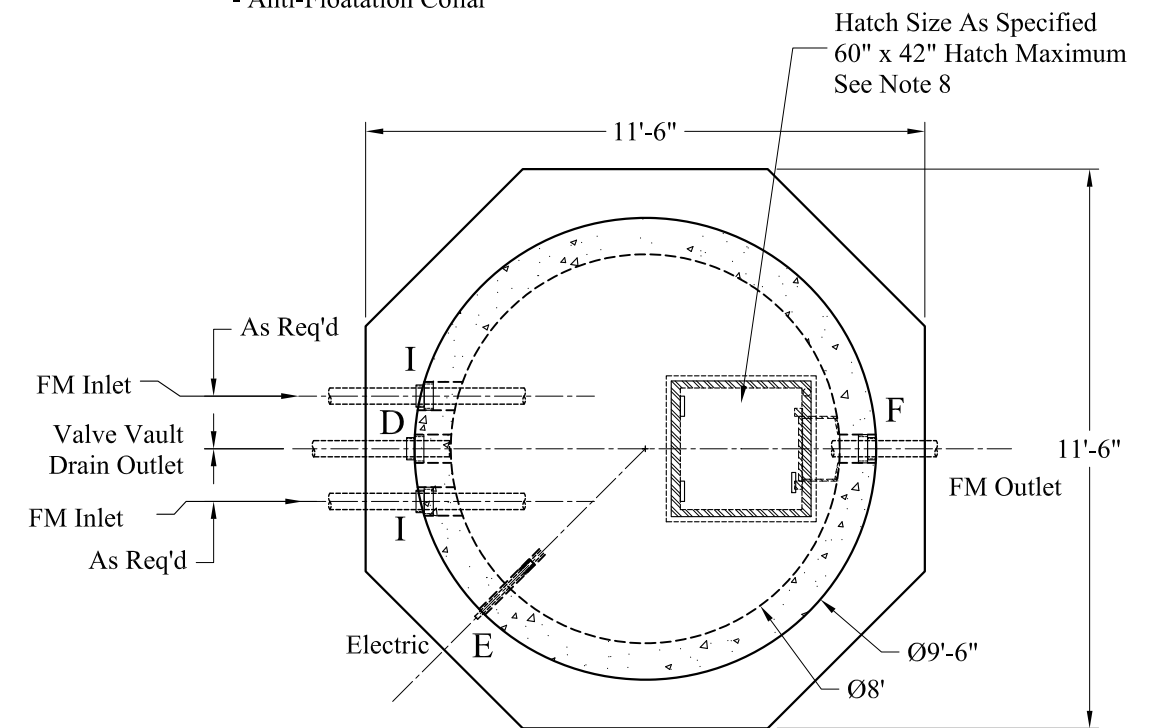
- LinkSeal Pipe Connections
- LinkSeal Electrical Connections
- Exterior Damp Proofing/Water Proofing
- Interior Coatings
- Interior Fill (Sloped Floor)
- Exterior Joint Wrap
- Aluminum Ladder
- "Ladder-Up" Safety Post
- Safety Net, Safety Grate
- Anti-Floatation Collar

Est Weights:

- Top Slab: 11,800 Lbs
- Risers: 3,040 Lbs/VF
- Sloped Floor: 1,900 Lbs
- Ext Base Slab: 14,800 Lbs



Detail A (NTS)  
Rebars Within Extended Base



Phoenix  
Precast  
Products

8' Diameter  
Valve Vault  
Extended Base

P/N: Custom As Required