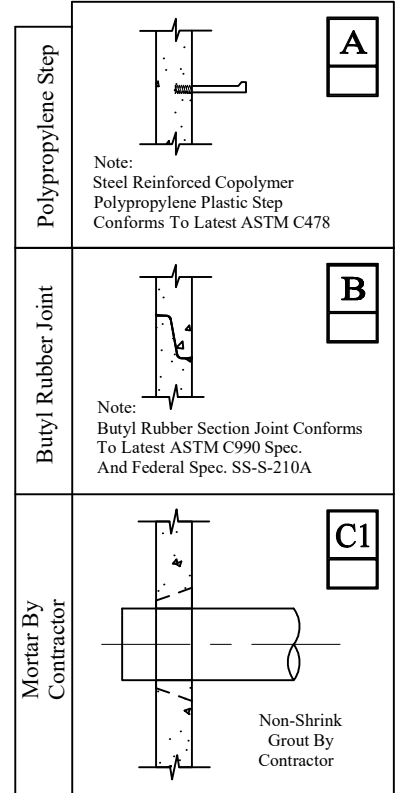
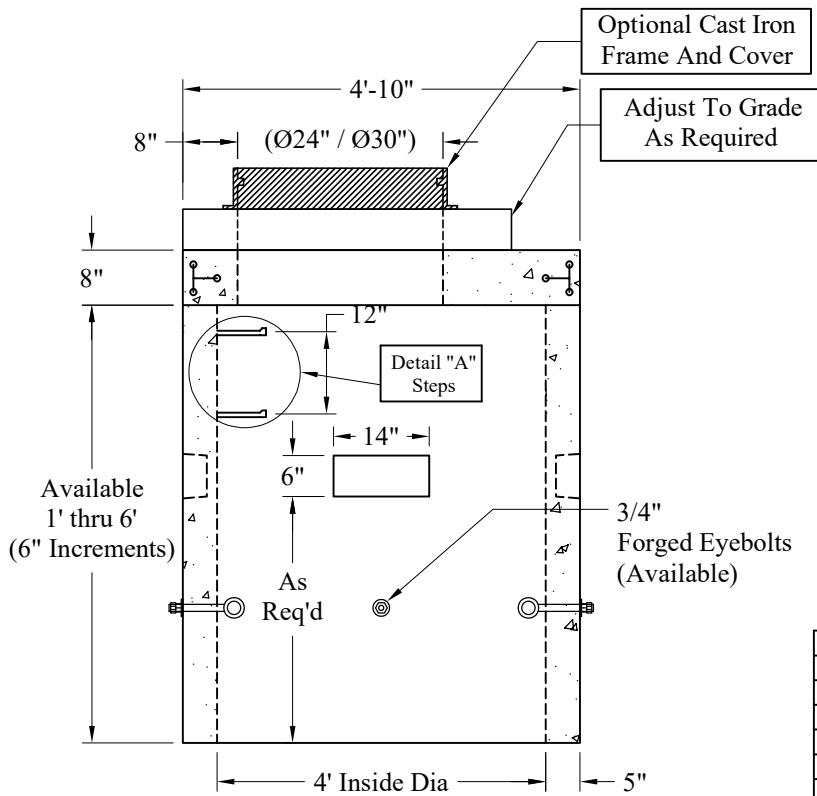


Top Slab Is Steel Reinforced To Meet Or Exceed H-20 Loading



Note: Steel Reinforced Copolymer Polypropylene Plastic Step Conforms To Latest ASTM C478

Note: Butyl Rubber Section Joint Conforms To Latest ASTM C990 Spec. And Federal Spec. SS-S-210A

Non-Shrink Grout By Contractor

Top Slab	Est Weight	P/N
24" Opening	2,360	MH4-TS24OFFBBS
30" Opening	1,960	MH4-TS30OFFBBS
Riser	Est Weight	P/N
1' Tall	880	MH4-1RBTBB
1'-6" Tall	1,320	MH4-1.5RBTBB
2' Tall	1,720	MH4-2RBTBB
2'-6" Tall	2,160	MH4-2.5RBTBB
3' Tall	2,600	MH4-3RBTBB
3'-6" Tall	3,040	MH4-3.5RBTBB
4' Tall	3,440	MH4-4RBTBB
4'-6" Tall	3,880	MH4-4.5RBTBB
5' Tall	4,320	MH4-5RBTBB
5'-6" Tall	4,760	MH4-5.5RBTBB
6' Tall	5,200	MH4-6RBTBB

- General Notes**
1. Steel Reinforcement Conforms to Latest ASTM Specification: ASTM A-615, Grade 60 Black Deformed Bars
ASTM A-185 Welded Wire Fabric
0.12 Sq. In./Lineal Ft.
 2. Concrete: $f_c = 4,000$ psi @ 28 Days Minimum, Type III Cement
 3. Butyl Rubber Joint Sealant Provided Conforms to ASTM C-990 And Federal Spec SS-S-210A
 4. HS-20 Design Loading Conforms to Latest Specifications
ASTM C478, AASHTO M199 Precast Reinforced Concrete Manhole Sections
 5. See Phoenix Pullbox Accessory Sheet for Available Options

Phoenix Precast Products

48" Diameter Pull Box

ASSY P/N: 4D-48PBX