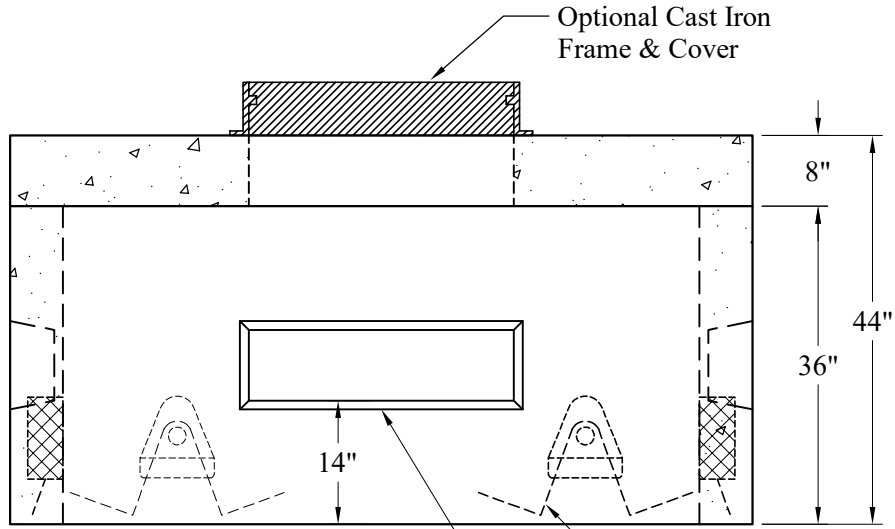


8" x 16" Knockout 2 Places
See Note 5



Optional Cast Iron
Frame & Cover

Pull Pockets Typ 4 Places
8" x 30" Knockouts 2 Places
See Note 5

Est Weight:

Top Slab:	2,925 Lbs
Box:	4,900 Lbs
Total:	7,825 Lbs

General Notes

- 1.) Concrete fc: 5,000 psi @ 28 Days Minimum
- 2.) Reinforcement Steel: ASTM A615 Grade 60 Rebar
- 3.) Design Loading: AASHTO-HS20-44
- 4.) Butyl rubber Joint Sealant Provided
- 5.) Modified Openings per Job Specifications are Available

Phoenix
Precast
Products

48" x 72" x 36"
Pull Box

P/N: HH-48X72X36

Concord, NH 03301