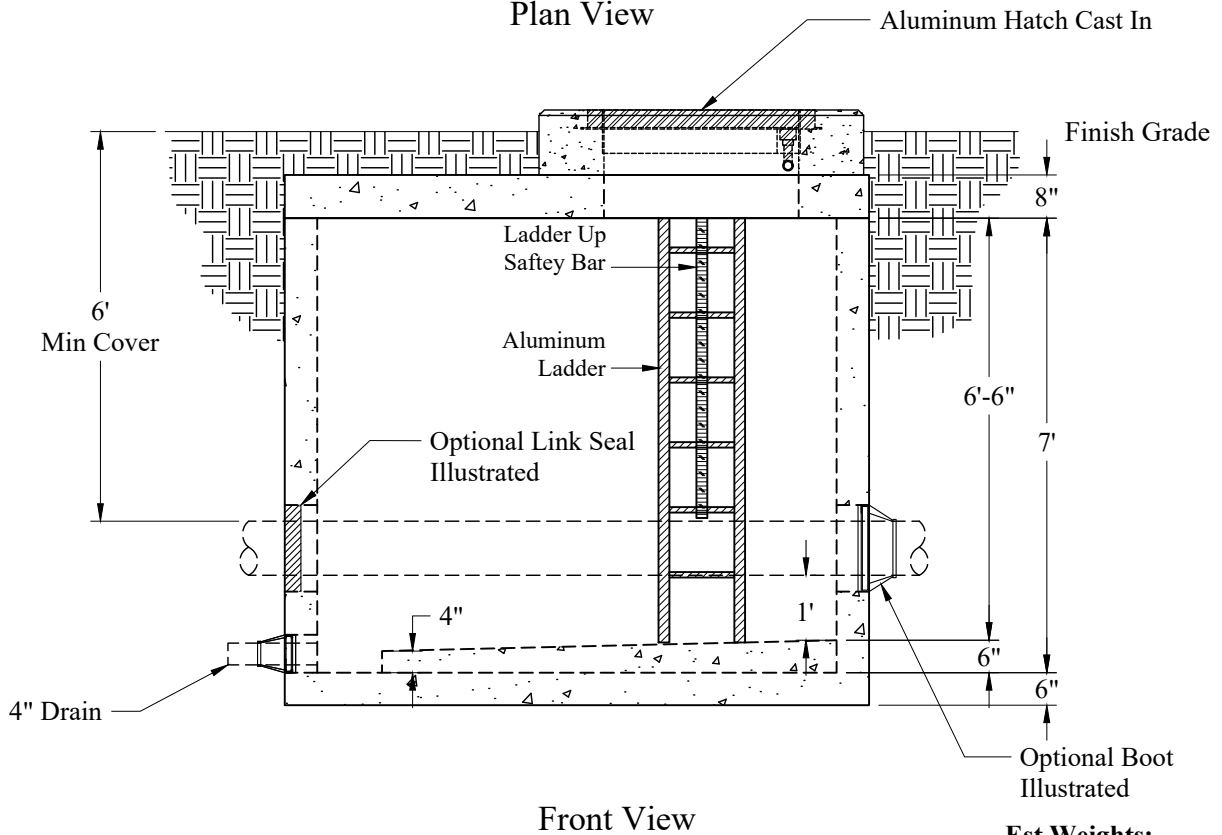


Plan View



Front View

Est Weights:

Top Slab:	4,480 Lbs
Base:	18,500 Lbs
Total:	22,980 Lbs

General Notes

1. Concrete: $f_c = 5,000$ psi @ 28 Days Minimum, Type III Cement
2. Steel Reinforcement Conforms to Latest ASTM Specification: ASTM A-615, Grade 60 Black Deformed Bars
3. Butyl Rubber Joint Sealant Provided Conforms to ASTM C-990 and Federal Spec SS-S-210A
4. Design Loading: AASHTO-HS20-44
5. Design Specification: per Latest ASTM C-857 & C858

Phoenix
Precast
Products

5' x 8' x 7'
Meter Vault

P/N: Custom As Required

Concord, NH 03301