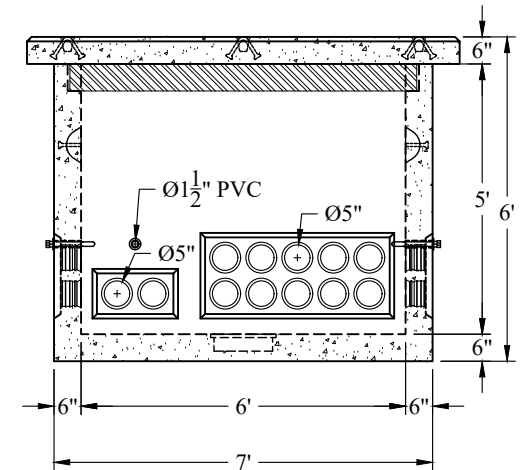
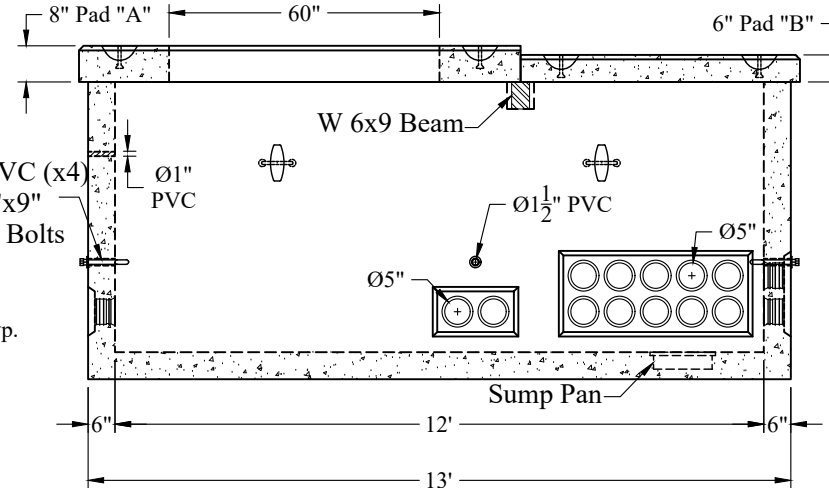
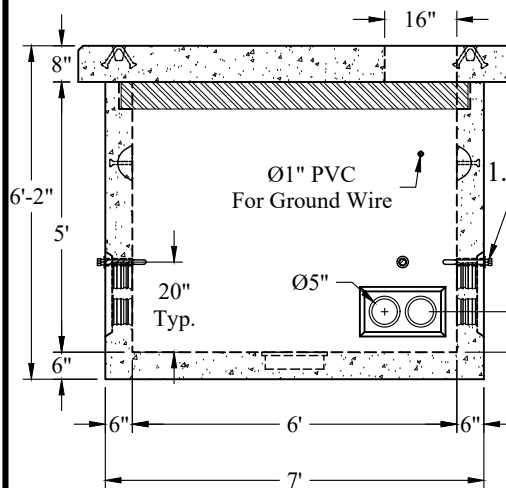
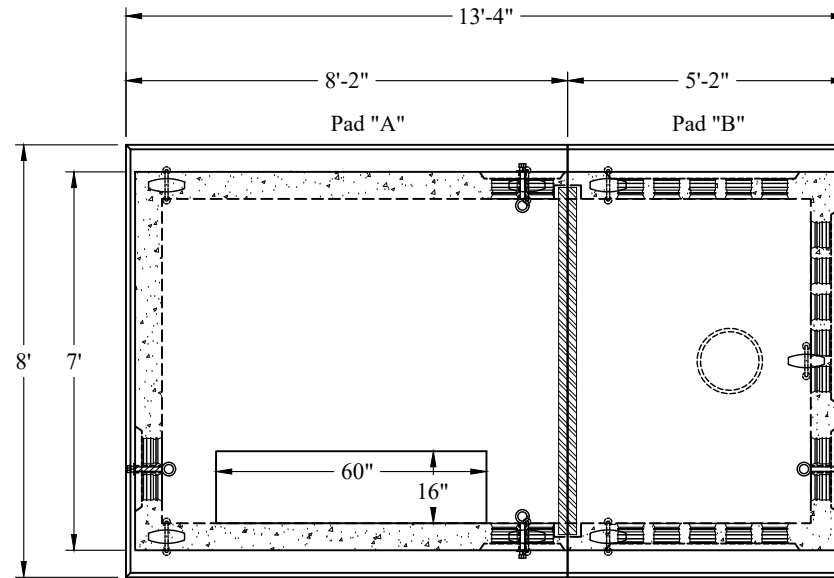
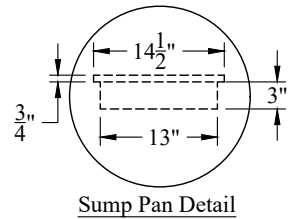


**General Notes:**

1. Concrete;  $f_c = 5,000$  psi @ 28 Days Min.
2. Reinforcing Steel: ASTM-A615 Grade #60.
3. Design Loading: AASHTO-H10
4. Pulleys =  $\varnothing 1\frac{1}{4}$ " Eyebolt With Galvanized Steel Washer.
5. Built to Green Mountain Power Spec K30.4

**Est. Weight:**

Vault:	20,800 Lbs
Pad "A":	5,800 Lbs
Pad "B":	3,100 Lbs
<b>Total:</b>	<b>29,700 Lbs</b>



Phoenix Precast Products

Phoenix Precast Products

Phoenix Precast Products	Green Mountain Power K30.4 Vault
	P/N: GMP-K30.4