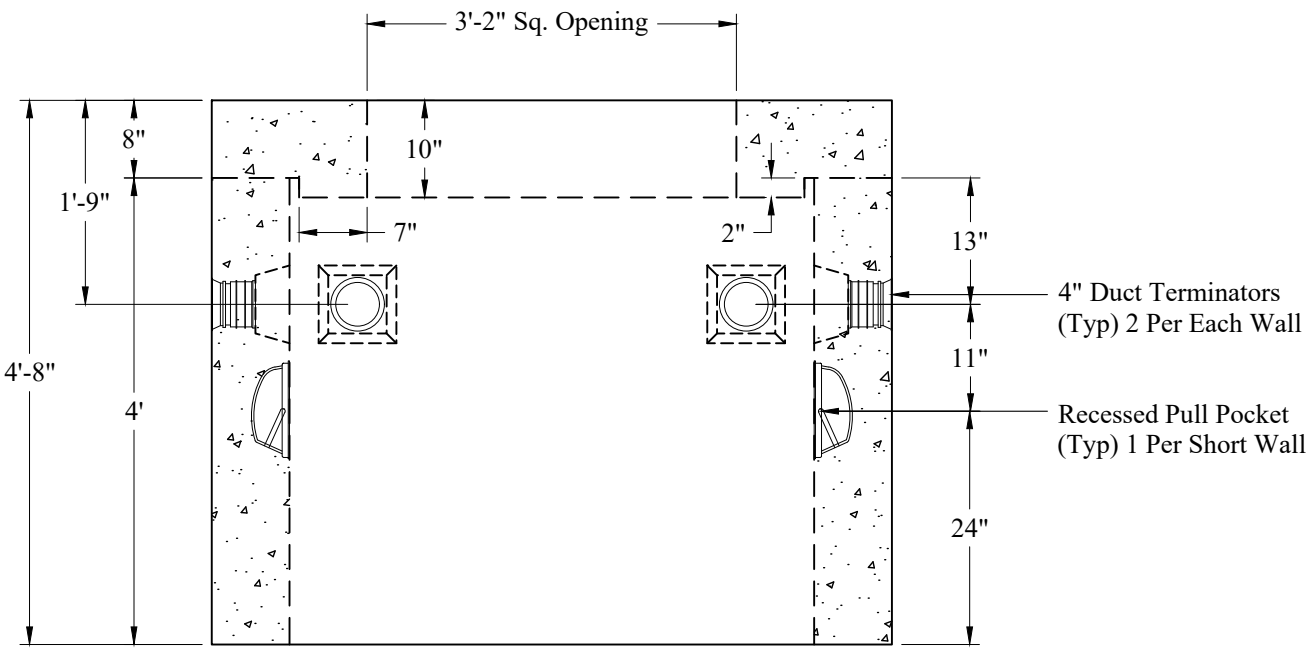
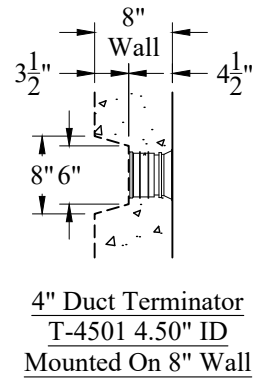
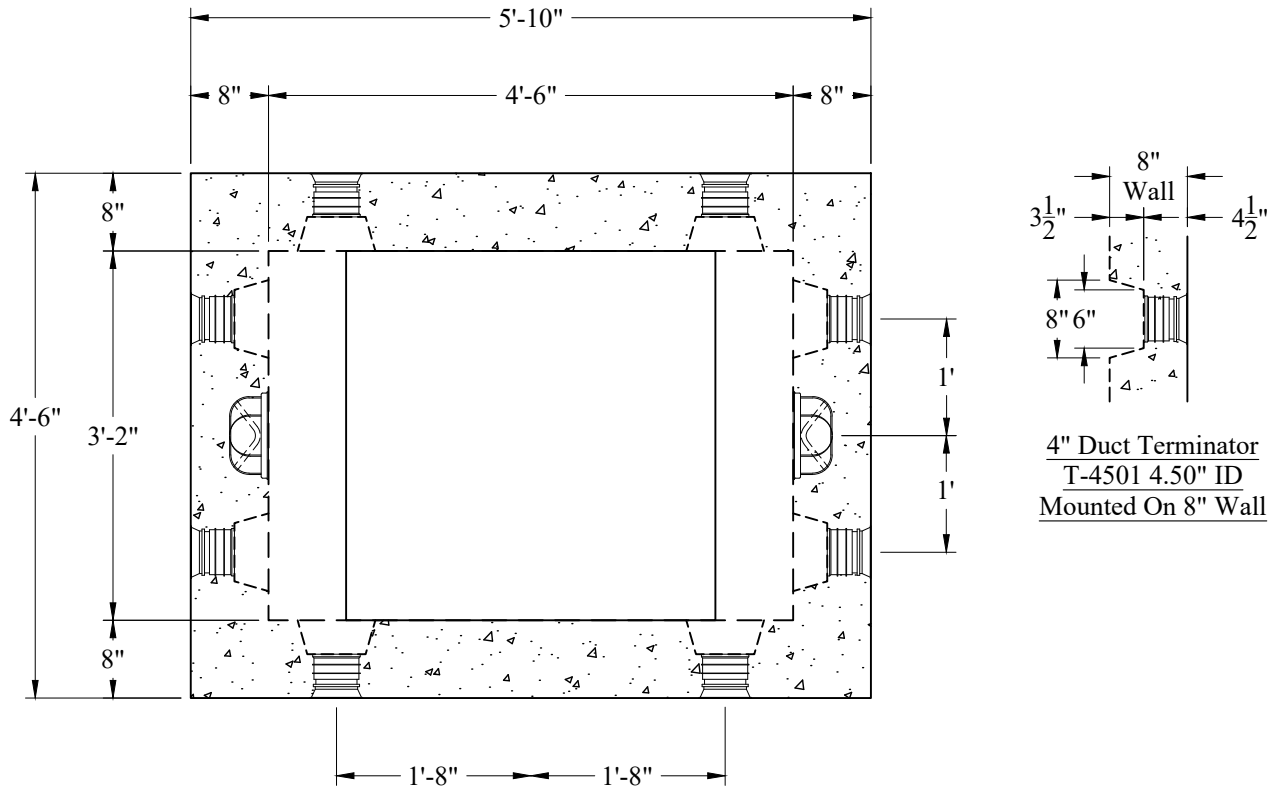


1-800-639-2199

Fax (603) 224-2927

Electrical\NEES & National Grid\MS3334 Handhole (v)



Est. Weight: 8,750 Lbs

General Notes

- 1.) Concrete fc: 5,000 psi @ 28 Days Minimum
- 2.) Reinforcement Steel: ASTM A615 Grade 60 Rebar
- 3.) Design Loading: AASHTO-HS20-44
- 4.) Modified Openings per Job Specifications are Available

Phoenix Precast Products	National Grid MS3334 Handhole
---	--

P/N: NG-MS3334

Phoenix Precast Products

Phoenix Precast Products