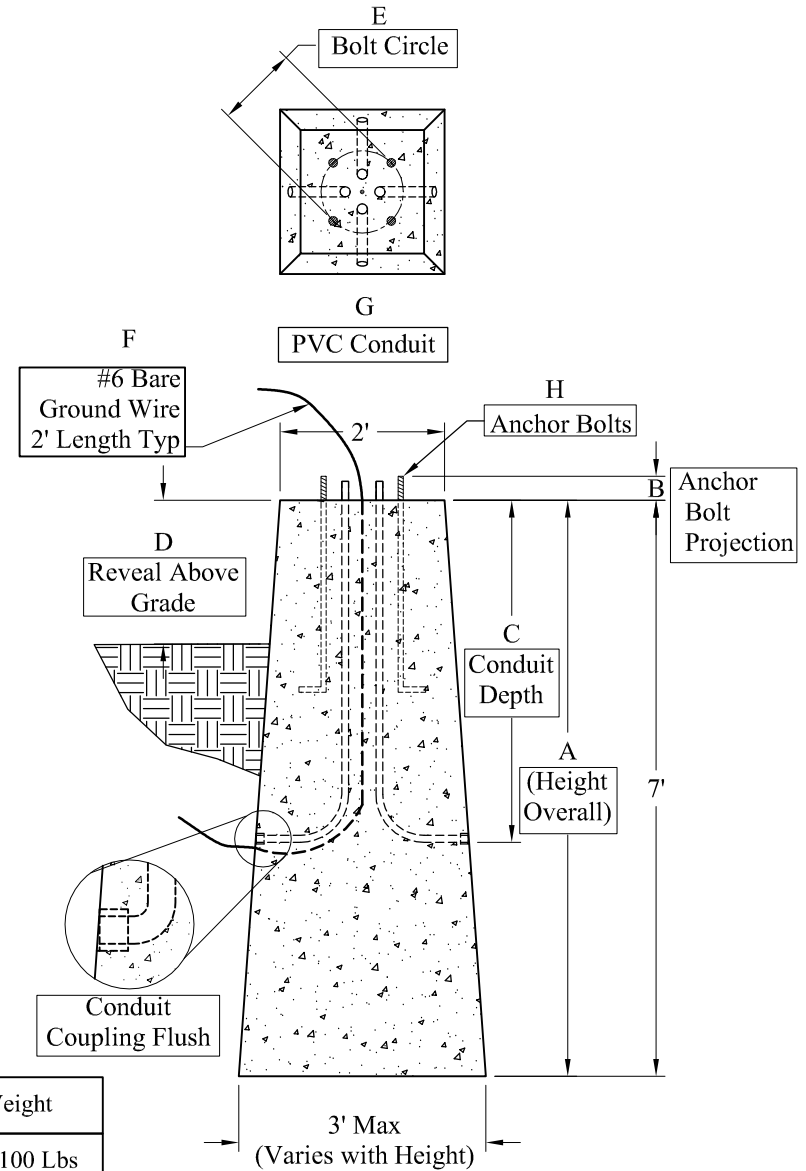
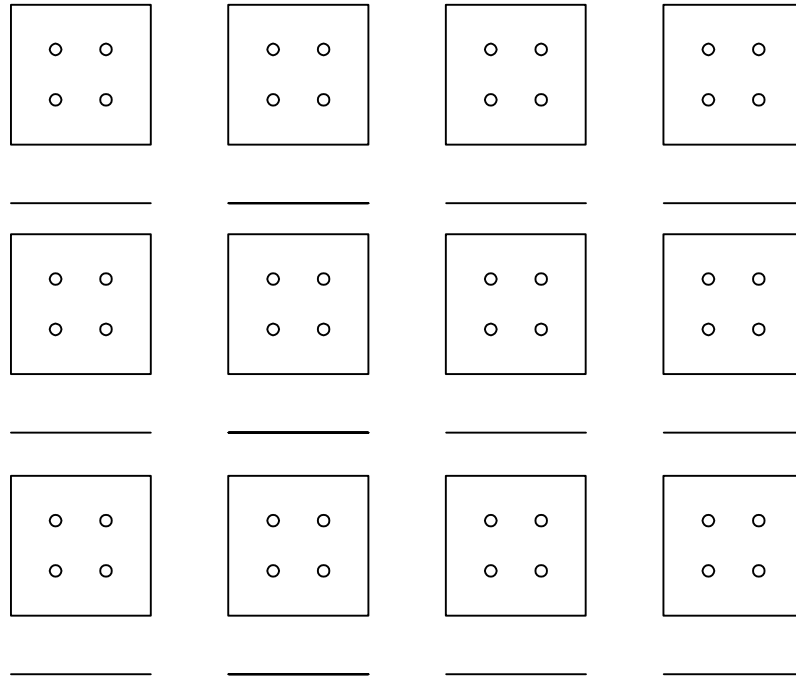


Phoenix Precast Products

Phoenix Precast Products



**Dimensions:**

- A.) Total Base Height \_\_\_\_\_
- B.) Bolt Projection \_\_\_\_\_
- C.) Depth of Conduit \_\_\_\_\_
- D.) Reveal Above Grade \_\_\_\_\_
- E.) Bolt Circle Diameter \_\_\_\_\_
- F.) Ground Wire - \_\_\_\_\_
- G.) Conduit (PVC) \_\_\_\_\_
- H.) Anchor Bolts - Dia & Length \_\_\_\_\_

Job #: \_\_\_\_\_

Cust: \_\_\_\_\_

Signoff: \_\_\_\_\_

Date: \_\_\_\_\_

**General Notes:**

1. Concrete:  $f_c = 5,000$  PSI @ 28 Days Min
2. Reinforcing Steel: ASTM A615 Grade 60 Rebar  
#6 Verticals, #3 Hoops

Height	Base Width	Weight
4'-0"	2'-7"	3,100 Lbs
5'-0"	2'-9"	4,125 Lbs
6'-0"	2'-10"	5,250 Lbs
7'-0"	3'-0"	6,500 Lbs

Phoenix  
Precast  
Products

Pyramid  
Light Pole Base