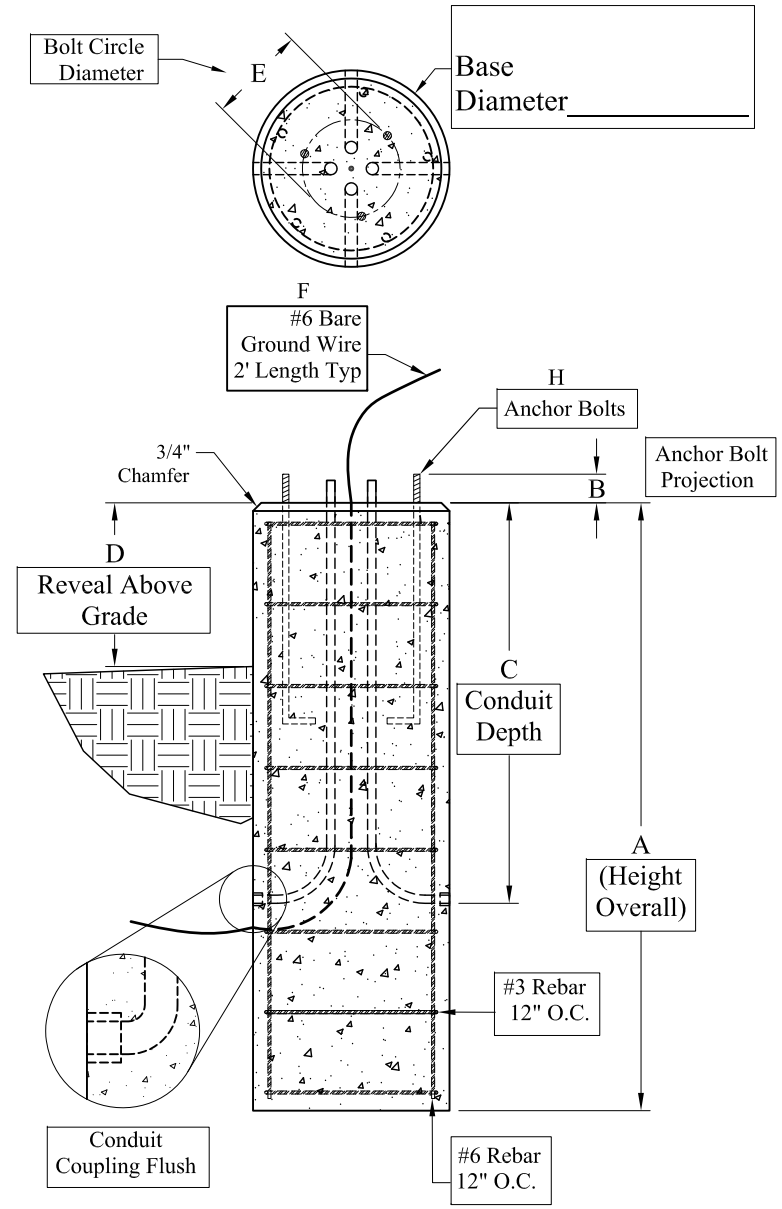
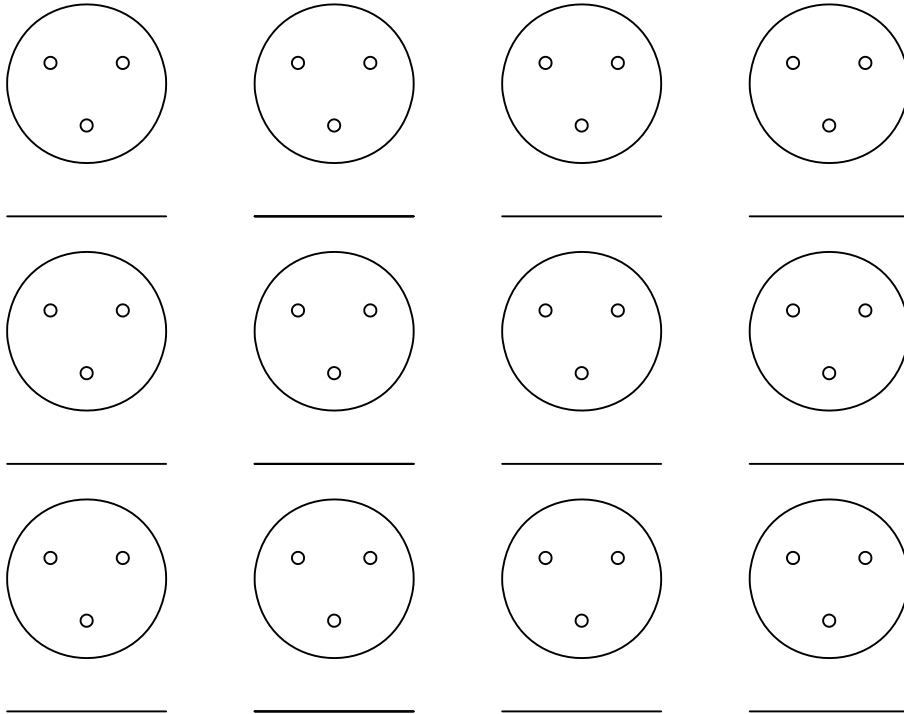


Conduit Location(s) / Quantities



Phoenix Precast Products

Phoenix Precast Products

Dimensions:

A.) Total Base Height _____

B.) Bolt Projection _____

C.) Depth of Conduit _____

D.) Reveal Above Grade _____

E.) Bolt Circle Diameter _____

F.) Ground Wire - _____

G.) Conduit Size (PVC) _____

H.) Anchor Bolts - Dia & Length _____

General Notes:

1. Concrete: $f_c = 5,000$ PSI @ 28 Days Min

2. Reinforcing Steel: ASTM A615 Grade 60 Rebar

Job #: _____

Cust: _____

Signoff: _____

Date: _____

Phoenix Precast Products	Round Light Pole Base 3-Bolt Pattern Order Form
--------------------------------	---