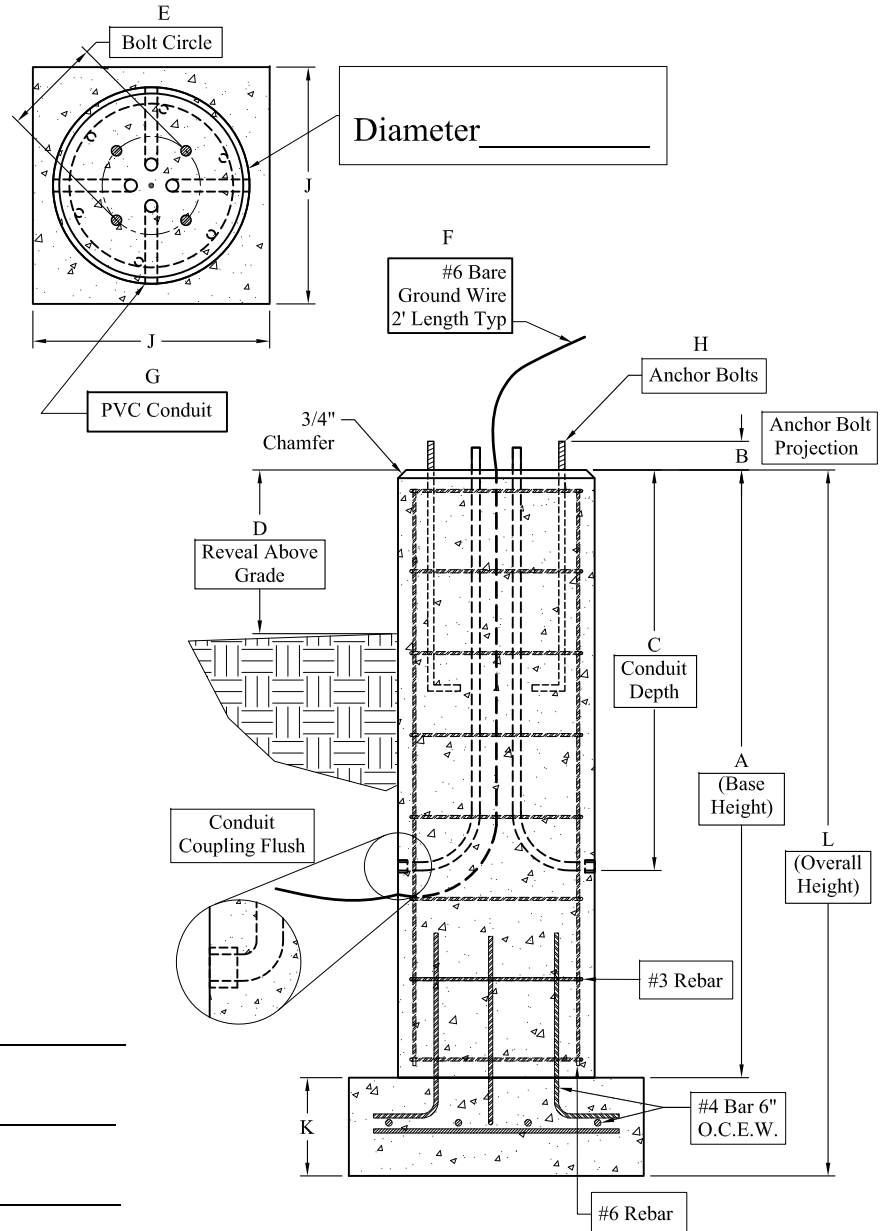
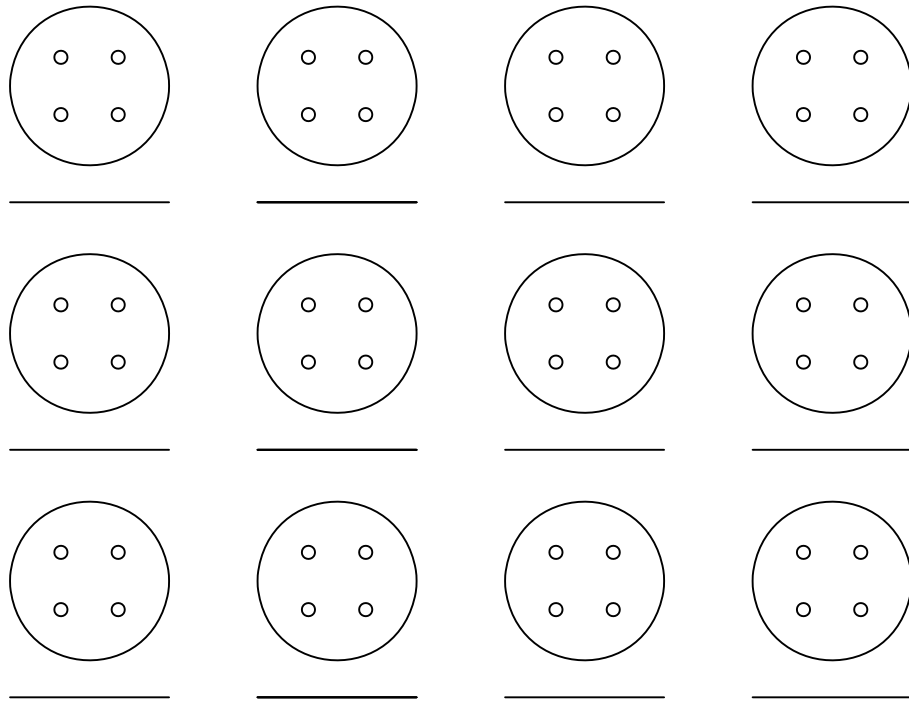


Phoenix Precast Products

Phoenix Precast Products



**Dimensions:**

- A.) Total Base Height \_\_\_\_\_
- B.) Bolt Projection \_\_\_\_\_
- C.) Depth of Conduit \_\_\_\_\_
- D.) Reveal Above Grade \_\_\_\_\_
- E.) Bolt Circle Diameter \_\_\_\_\_
- F.) Ground Wire - \_\_\_\_\_
- G.) Conduit Size (PVC) \_\_\_\_\_
- H.) Anchor Bolts - Dia & Length \_\_\_\_\_
- J.) Footing Width \_\_\_\_\_
- K.) Footing Height \_\_\_\_\_
- L.) Overall Height \_\_\_\_\_

**General Notes:**

1. Concrete:  $f_c = 5,000$  PSI @ 28 Days Min
2. Reinforcing Steel: ASTM A615 Grade 60 Rebar

Job #: \_\_\_\_\_

Cust: \_\_\_\_\_

Signoff: \_\_\_\_\_

Date: \_\_\_\_\_

Phoenix  
Precast  
Products

Round Light Pole Base  
With Sq Extended Base  
Order Form