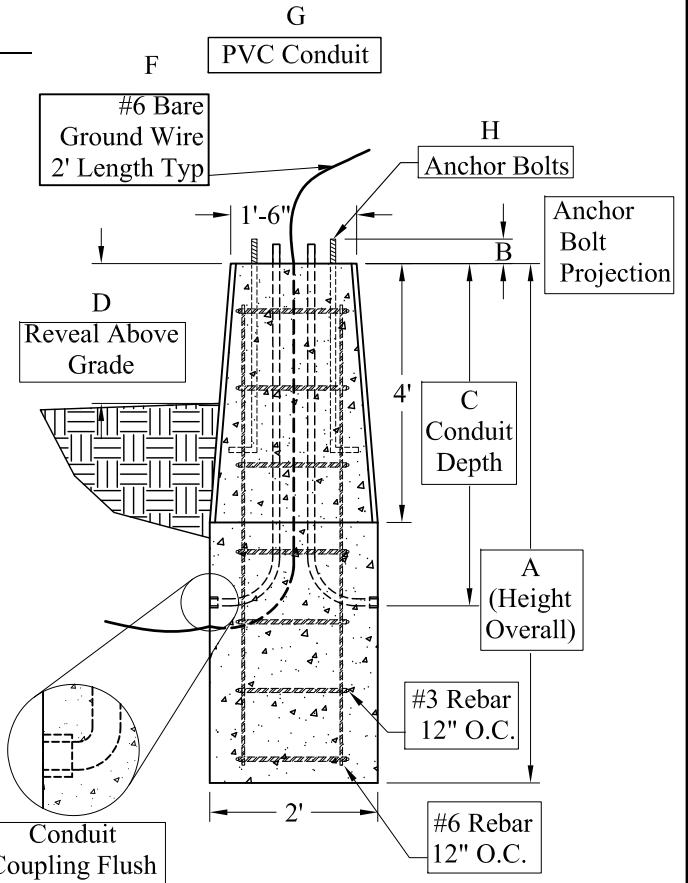
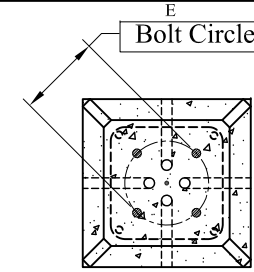


Job #: _____

Cust: _____

Signoff: _____

Date: _____



Dimensions:

- A.) Total Base Height _____
- B.) Bolt Projection _____
- C.) Depth of Conduit _____
- D.) Reveal Above Grade _____
- E.) Bolt Circle Diameter _____
- F.) Ground Wire - _____
- G.) Conduit (PVC) _____
- H.) Anchor Bolts - Dia & Length _____

General Notes:

1. Concrete: $f_c = 5,000$ PSI @ 28 Days Min
2. Reinforcing Steel: ASTM A615 Grade 60 Rebar
#6 Verticals, #3 Hoops

Height	Weight	P/N
4' - 6"	2,110 Lbs	LPTPRD-45
5' - 0"	2,410 Lbs	LPTPRD-5
5' - 6"	2,705 Lbs	LPTPRD-55
6' - 0"	3,005 Lbs	LPTPRD-6
6' - 6"	3,295 Lbs	LPTPRD-65
7' - 0"	3,590 Lbs	LPTPRD-7
7' - 6"	3,890 Lbs	LPTPRD-75
8' - 0"	4,185 Lbs	LPTPRD-8
8' - 6"	4,480 Lbs	LPTPRD-85
9' - 0"	4,775 Lbs	LPTPRD-9
9' - 6"	5,070 Lbs	LPTPRD-95
10' - 0"	5,370 Lbs	LPTPRD-10

Phoenix Precast Products	Standard Tapered Light Pole Base (Long)
P/N: See Above	