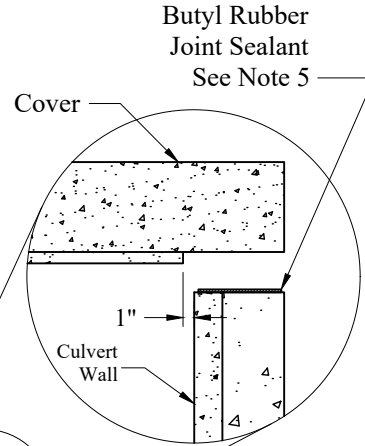
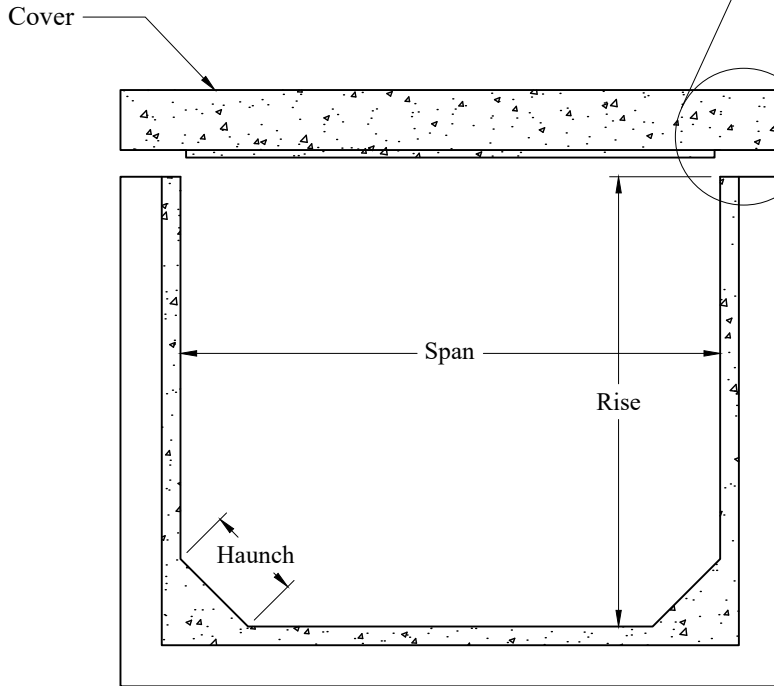


Tongue and Groove
Connection at Each End

Side View



Cover Joint
Detail



End View

General Notes

1. Concrete: $f_c = 5,000$ psi @ 28 Days Minimum, Type III Cement
2. Steel Reinforcing Conforms to Latest ASTM Specifications
ASTM A-615 Grade 60 Rebar
3. Designed per Latest ASTM Specification C-1433
4. Design Loading:
Live Load : Per Job Specifications
Dead Load : Per Job Specifications
5. Butyl Rubber Joint Sealant Conforms to ASTM C-990 and
Federal Spec SS-S-210A

**Phoenix
Precast
Products**

**Typical
Open-Top
Box Culvert**

**P/N: Custom As Required
Concord, NH 03301**

77 Regional Drive