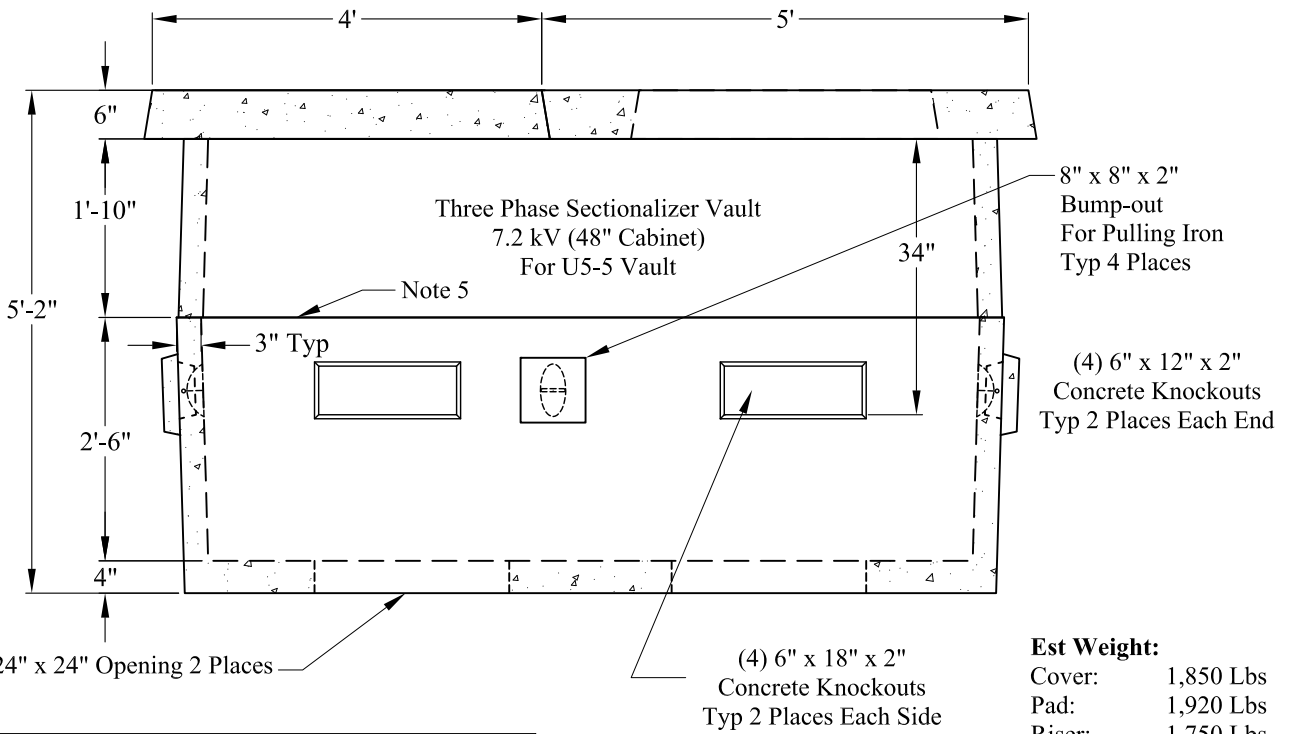


Recessed Pull Handles 4 Places In Vault



Est Weight:

Cover:	1,850 Lbs
Pad:	1,920 Lbs
Riser:	1,750 Lbs
Base:	4,300 Lbs
Total:	9,820 Lbs

General Notes

1. Reinforcement Steel Conforms to: ASTM A615 Grade 60
2. Concrete: $f_c = 5,000$ psi @ 28 Days Minimum
3. Conforms to NHEC Specification
4. Top of Vault Shall be 4" - 6" Above Finish Grade
5. Butyl Joint Sealant Provided
6. Vault is for Non-Traffic Applications

**Phoenix
Precast
Products**

**NH Co-Op
U5-5 Three Phase 7.2 KV
Sectionalizer Vault
(48" Cabinet)**

P/N: NHEC-U5-53PSEC7