



2024

RETAIL PRODUCT CATALOG



 Part of the Afinitas Family.

DEL DOT PIPE GUARDS

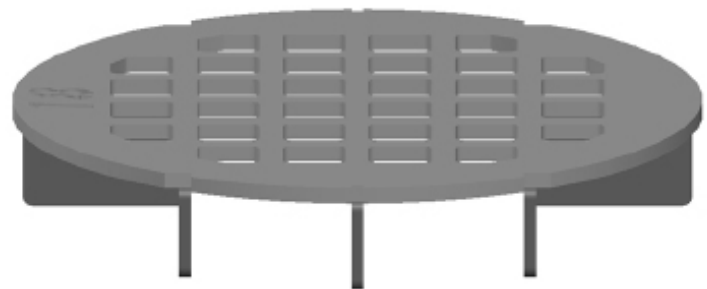
OUTLET SCREEN OPEN BOTTOM - DOMESTIC PRODUCT - GALVANIZED

Part #	Pipe ID	Grate OD	Price	Retail
OSOB12	12"	16"		
OSOB15	15"	19-1/2"		
OSOB18	18"	23"		
OSOB24	24"	30"		
OSOB30	30"	37"		
OSOB36	36"	44"		
OSOB42	42"	51"		



BELL END GRATES DOMESTIC PRODUCT - GALVANIZED

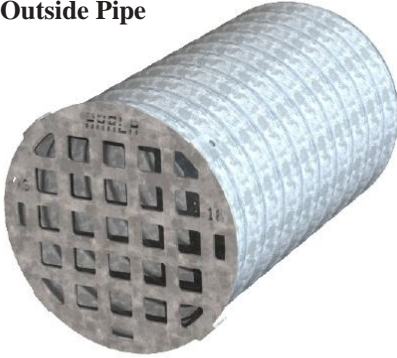
Part #	Pipe Size	Grate OD	Grate Height	Opening Size	Price	Retail
BEG12	12"	15.4"	3.5"	2"		
BEG15	15"	18.6"	3.5"	2"		
BEG18	18"	22"	3.5"	2"		
BEG24	24"	29"	4.0"	2"		
Grates fit inside the Bell End of pipe.						



OUTLET SCREENS

CMP AND HDPE SCREENS - DOMESTIC PRODUCT - GALVANIZED

Outside Pipe



Part #	Pipe Size	Grate OD	Price 1/4" Plate	Retail
OS12	12"	14"		
OS12-1 1" Openings	12"	14"		
OS15	15"	17"		
OS18	18"	20"		
OS24	24"	26"		
OS24-1 1" Openings	24"	26"		
OS30	30"	32"		
OS36	36"	38"		
OS48	48"	50"		

Inside Pipe



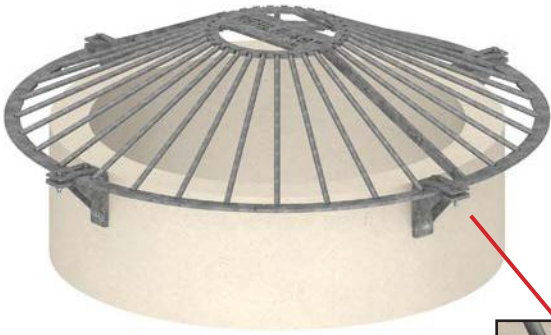
Part #	Pipe Size	Grate OD	Price 1/4" Plate	Retail
OS12IS	12"	11-1/2"		
OS15IS	15"	14-1/2"		
OS18IS	18"	17-1/2"		
OS24IS	24"	23-1/2"		
OS30IS	30"	29-1/2"		
OS36IS	36"	35-1/2"		
OS48IS	48"	47-1/2"		

Outlet Screens are designed to mount on an inlet or outlet pipe and prevent small debris from passing through. Screens are available as inside or outside mounting. Outside mounts are sized to fit CMP. Inside mounts can be installed in any style of pipe.

- Plate design is durable and clean
- 1/4" plate thickness
- Typ openings are 2" but also available as 1" and custom sizes
- Includes 4 mounting tabs for bolts or self drilling screws
- Galvanized steel construction.
- Can be made from aluminum or stainless steel.

CONE GRATE TRASHRACK

SIDE MOUNT STYLE - DOMESTIC PRODUCT - GALVANIZED



Side Mount with Brackets



Fastener Detail



Also available with Anti-Vortex Plate. Call for pricing.

- 6" Max. opening between vertical bars.
- * Grates 72" and larger are built in two pieces for easy installation. Bolt together design.

Part #	Pipe ID	Pipe OD	Grate OD	Bar Dia.	Grate Height	Wall Thickness	Mounting Brackets	Price	Retail
CGSM30	30"	37"	46"	3/4"	12"	3-1/2"	4		
CGSM33	33"	37-1/2"	50"	3/4"	12"	3-3/4"	4		
CGSM36	36"	44"	54-1/2"	3/4"	12"	4"	4		
CGSM42	42"	51"	61"	3/4"	12"	4-1/2"	4		
CGSM48	48"	58"	70"	3/4"	12"	5"	4		
CGSM54	54"	65"	77"	3/4"	18"	5-1/2"	4		
CGSM60	60"	72"	84"	3/4"	18"	6"	6		
CGSM66	66"	79"	92"	3/4"	18"	6-1/2"	8		
CGSM72	72"	86"	98"	3/4"	18"	7"	8		
CGSM78	78"	93"	101"	3/4"	24"	7-1/2"	8		
CGSM84	84"	100"	110"	3/4"	24"	8"	8		
CGSM96	96"	114"	126"	3/4"	24"	9"	8		
CGSM108	108"	128"	140-1/2"	1"	36"	10"	8		
CGSM120	120"	140"	154"	1"	36"	11"	8		

CONE GRATE TRASHRACK

TOP MOUNT STYLE - DOMESTIC PRODUCT - GALVANIZED



Also available with
Anti-Vortex Plate. Call for pricing.

- 6" Max. opening between vertical bars.
- * Grates 84" and larger are built in two pieces for easy installation. Bolt together design.

Part #	Pipe ID	Pipe OD	Grate OD	Bar Dia.	Grate Height	Wall Thickness	Suggested Anchors	Price	
CG12TM	12"	16"	16"	5/8"	8"	2"	4		
CG15TM	15"	19.5"	19"	5/8"	8"	2-1/4"	4		
CG18TM	18"	23"	23"	5/8"	8"	2-1/2"	4		
CG21TM	21"	27"	26"	5/8"	8"	2-3/4"	4		
CG24TM	24"	30"	28"	3/4"	8"	3"	4		
CG27TM	27"	34"	32"	3/4"	8"	3-1/4"	4		
CG30TM	30"	37"	35"	3/4"	12"	3-1/2"	4		
CG33TM	33"	40"	39"	3/4"	12"	3-3/4"	4		
CG36TM	36"	44"	41"	3/4"	12"	4"	4		
CG42TM	42"	51"	47"	3/4"	12"	4-1/2"	4		
CG48TM	48"	58"	55"	3/4"	12"	5"	4		
CG48TMD	48"	58"	55"	3/4"	12"	5"	4		
CG54TM	54"	65"	59"	3/4"	12"	5-1/2"	4		
CG60TM	60"	72"	69"	1"	18"	6"	8		
CG60TMD	60"	72"	69"	1"	18"	6"	8		
CG66TM	66"	79"	73"	1"	18"	6-1/2"	8		
CG72TM	72"	86"	82"	1"	18"	7"	8		
CG72TMD	72"	86"	82"	1"	18"	7"	8		
CG78TM	78"	93"	86"	1"	24"	7-1/2"	8		
CG84TM	84"	100"	95"	1"	24"	8"	8		
CG96TM	96"	114"	108"	1"	24"	9-3/4"	8		
CG108TM	108"	128"	122"	1"	36"	10"	8		
CG120TM	120"	140"	134"	1"	36"	11"	8		

Part #	Wedge Anchors	Price	Retail
52010	1/2"x3-3/4" Zinc		
52060	1/2"x3-3/4" Stainless Steel		

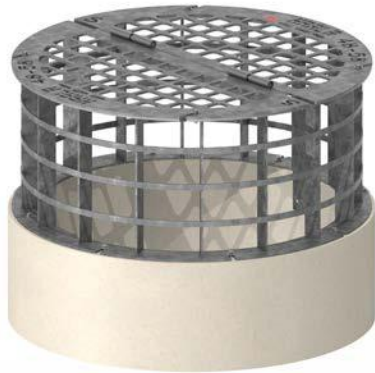


Also available with Anti-Vortex Plate. Call for pricing.

Part #	Pipe ID	Pipe OD	Grate OD	Wall Thickness	Max Opening	Grate Height	Suggested Anchors	Price	Retail
RCG24	24"	30"	29"	3"	6"x11"	20"	4		
RCG27	27"	34"	33"	3-1/4"	6"x12"	20"	4		
RCG30	30"	37"	36"	3-1/2"	6"x12"	24"	4		
RCG33	33"	37"	36"	3-3/4"	6"x11"	24"	4		
RCG36	36"	44"	43"	4"	6"x10"	24"	4		
RCG42	42"	51"	50"	4-1/2"	6"x12"	24"	4		
RCG48	48"	58"	56"	5"	6"x10"	24"	4		
RCG54	54"	65"	61"	5-1/2"	6"x10"	24"	4		
RCG60	60"	72"	71"	6"	6"x10"	36"	8		
RCG66	66"	79"	78"	6-1/2"	6"x10"	36"	8		
RCG72	72"	86"	85"	7"	6"x10"	36"	8		
RCG78	78"	93"	92"	7-1/2"	6"x11"	48"	8		
RCG84	84"	100"	96.5"	8"	6"x10"	48"	8		
RCG96	96"	114"	113"	9-3/4"	6"x10"	48"	8		
RCG108	108"	128"	127"	10"	6"x11"	60"	8		
RCG120	120"	140"	139"	11"	6"x10"	60"	8		

** 84" and larger are built in two pieces for easy installation. Bolt together design.*

Part #	Wedge Anchors	Price	Retail
52010	1/2"x3-3/4" Zinc		
52060	1/2"x3-3/4" Stainless Steel		



Also available with
Anti-Vortex Plate. Call for pricing.

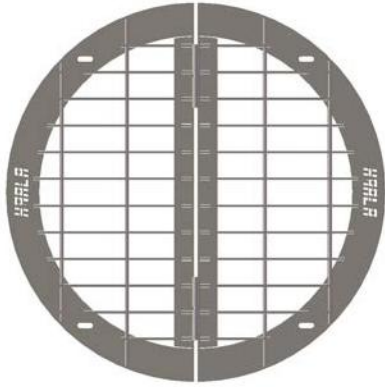
- 12"-33" have a removable, single top piece.
- 36"-96" grates, the top is hinged.
- 96" and larger are built in two pieces for easy installation. Bolt together design.

Part #	Pipe ID	Grate OD	Material Thickness	Side Max Opening	Grate Height	Opening Web	Suggested Anchors	Price	Retail
GG12	12"	16"	1/4"	4"x6"	9"	3.3"x3.3"-3/4"	4		
GG15	15"	19"	1/4"	4"x6"	9"	3.3"x3.3"-3/4"	4		
GG18	18"	23"	1/4"	4"x6"	9"	3.3"x3.3"-3/4"	4		
GG21	21"	26"	1/4"	4"x6"	9"	3.3"x3.3"-3/4"	4		
GG24	24"	28"	3/8"	6"x10"	20"	3.3"x3.3"-3/4"	4		
GG27	27"	33"	3/8"	6"x10"	20"	3.3"x3.3"-3/4"	4		
GG30	30"	35"	3/8"	6"x10"	20"	3.3"x3.3"-3/4"	4		
GG33	33"	39"	3/8"	6"x10"	20"	3.3"x3.3"-3/4"	4		
GG36	36"	40"	3/8"	6"x10"	20"	3.3"x3.3"-3/4"	4		
GG42	42"	47"	3/8"	6"x10"	20"	3.3"x3.3"-3/4"	4		
GG48	48"	53"	3/8"	6"x10"	24"	3.3"x3.3"-3/4"	4		
GG54	54"	60"	3/8"	6"x10"	24"	3.3"x3.3"-3/4"	4		
GG60	60"	69"	3/8"	6"x10"	24"	4"x4"-1"	8		
GG66	66"	73"	1/2"	6"x10"	24"	4"x4"-1"	8		
GG72	72"	82"	1/2"	6"x10"	24"	4"x4"-1"	8		
GG78	78"	86"	1/2"	6"x10"	24"	4"x4"-1"	8		
GG84	84"	95"	1/2"	6"x10"	24"	4"x4"-1"	8		
GG96	96"	108"	1/2"	6"x10"	24"	4"x4"-1"	8		
GG1	108"	122"	1/2"	6"x10"	24"	4"x4"-1"	8		
GG120	120"	134"	1/2"	6"x10"	24"	4"x4"-1"	8		

Part #	Wedge Anchors	Price	Retail
52010	1/2"x3-3/4" Zinc		
52060	1/2"x3-3/4" Stainless Steel		

POND SKIMMER GRATES

FLAT IRON STYLE - DOMESTIC PRODUCT - GALVANIZED

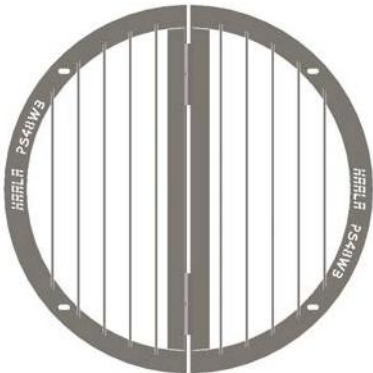


Part #	Pipe Size ID	Grate Size OD	Grate Height	Plate Size	Price	Retail
PS27SR	27"	33"	3-1/2"	3/8"		
PS48SR	48"	57"	3-1/2"	3/8"		
PS60SR	60"	69"	3-1/2"	3/8"		
PS72SR	72"	81"	3-1/2"	3/8"		
PS84SR	84"	93"	3-1/2"	3/8"		
PS96SR	96"	107"	3-1/2"	3/8"		
PS108SR	108"	120"	3-1/2"	3/8"		

Pond skimmers are made from 3/8"x2" flats at 4"c/c and have a fabricated 3-1/2"x3/8" angle iron outer frame. Bearing bars run perpendicular to the hinge joint. All sizes have cross bars. Hinges are mounted so that grate can be disassembled in the field.

POND SKIMMER GRATES

WOODBURY STYLE - DOMESTIC PRODUCT - GALVANIZED



Part #	Pipe Size ID	Grate Size OD	Grate Height	Plate Size	Cross Bar Yes/No	Price	Retail
PS48WB	48"	57"	2-1/2"	3/8"	No		
PS60WB	60"	69"	2-1/2"	3/8"	No		
PS72WB	72"	81"	2-1/2"	3/8"	No		
PS84WB	84"	93"	2-1/2"	3/8"	Yes		
PS96WB	96"	107"	2-1/2"	3/8"	Yes		
PS120WB	120"	132"	2-1/2"	3/8"	Yes		

Pond skimmers are made from 3/8"x2" flats at 4" C/C and have a fabricated 2-1/2"x3/8" angle iron outer frame. Bearing bars run parallel to the hinge joint. Grates 84" and larger have cross bars. Hinges are mounted so that grate can be disassembled in the field.

POND SKIMMER GRATES

FOR ROUND MANHOLES - DOMESTIC PRODUCT - GALVANIZED

Hinges are not included with the 48" and smaller standard grates. Hinges can be added for \$\$\$ per grate.

Part # Standard	Pipe ID	Grate OD	Plate Size	Opening -Web	Open Sq. Ft.	Equiva- lent	Suggested Anchors	Price	Retail
PS24-30S	24"	30"	3/8"	3.3"x3.3"-3/4"	1.63	165.81"	4		
PS27-33S	27"	33"	3/8"	3.3"x3.3"-3/4"	2.17	151.08"	4		
PS30-37S	30"	36"	3/8"	3.3"x3.3"-3/4"	2.61	204.90"	4		
PS36-44S	36"	43"	3/8"	3.3"x3.3"-3/4"	4.10	235.72"	4		
PS36-44S-2	36"	43"	3/8"	2"x2"-3/4"	3.30	228.34"	4		
PS42-51S	42"	50"	3/8"	3.3"x3.3"-3/4"	5.06	265.42"	4		
PS48-58S	48"	57"	3/8"	3.3"x3.3"-3/4"	7.01	300.84"	4		
PS48-58SWH	48"	57"	3/8"	3.3"x3.3"-3/4"	7.01	300.84"	4		
PS48-58SWOH	48"	57"	3/8"	3.3"x3.3"-3/4"	6.16	260.43"	4		
PS48-58S-2	48"	57"	3/8"	2"x2"-3/4"	5.48	285.44"	4		
PS54-65S	54"	62"	3/8"	3.3"x3.3"-3/4"	9.52	385.42"	4		
PS60-72S	60"	68"	3/8"	4"x4"-1"	11.61	427.80"	8		
Part # Heavy	Pipe ID	Grate OD	Plate Size	Opening -Web	Open Sq. Ft.	Equiva- lent	Suggested Anchors	Price	Retail
PS24-30H	24"	30"	1/2"	3.3"x3.3"-3/4"	1.63	165.81"	4		
PS27-33H	27"	33"	1/2"	3.3"x3.3"-3/4"	2.17	151.08"	4		
PS30-37H	30"	36"	1/2"	3.3"x3.3"-3/4"	2.76	204.90"	4		
PS36-44H	36"	44"	1/2"	3.3"x3.3"-3/4"	4.10	242.24"	4		
PS48-58H	48"	57"	1/2"	3.3"x3.3"-3/4"	7.61	341.12"	4		
PS48-58H-2	48"	57"	1/2"	2"x2"-3/4"	5.74	298.20"	4		
PS54-65H	54"	62"	1/2"	3.3"x3.3"-3/4"	9.52	385.42"	4		
PS60-72H	60"	68"	1/2"	4"x4"-1"	11.61	427.80"	8		
PS60-72H-2	60"	68"	1/2"	2"x2"-3/4"	9.06	387.36"	8		
PS66-79H	66"	75"	1/2"	4"x4"-1"	14.20	473.06"	8		
PS72-86H	72"	81"	1/2"	4"x4"-1"	17.01	571.18"	8		
PS78-93H	78"	87"	1/2"	4"x4"-1"	19.92	600.66"	8		
PS84-100H	84"	94"	1/2"	4"x4"-1"	23.36	653.60"	8		
PS96-114H	96"	107"	1/2"	4"x4"-1"	30.45	685.82"	8		
PS108-128H	108"	120"	1/2"	4"x4"-1"	35.38	838.86"	8		
PS120-140H	120"	134"	1/2"	4"x4"-1"	41.57	949.04"	12		



Also available with Anti-Vortex Plate. Call for pricing.



- Pond Skimmers will be made from plate unless specified rod style.
- Sizes 60" & larger have supports on the underside.
- Grates can be made to your specifications. Hinged and locked access doors can be added.

Part #	Wedge Anchors	Price	Retail
52010	1/2"x3-3/4" Zinc		
52060	1/2"x3-3/4" Stainless		

MANHOLE GRATES

SIDE FLOW GRATES - DOMESTIC PRODUCT - GALVANIZED



Part #	Manhole OD	Grate Opening	Depth	Plate Size	Price	Retail
SF1036958	58"	10"x36"	9"	1/4"		
SF1524958	58"	15"x24"	9"	1/4"		
SF1036958NTF	58"	10"x36"	9"	1/4"		
SF1849958	58"	18"x49"	9"	1/4"		
SF1849972	72"	18"x49"	9"	1/4"		
SF1849986	86"	18"x49"	9"	1/4"		
SF6429114	114"	6"x42"	9"	1/4"		
SF1524958	58"	15"x24"	9"	1/4"		

TRIANGLE GRATES

DOMESTIC PRODUCT - GALVANIZED



Part #	Manhole OD	Grate Opening	Depth	Opening - Web	Plate Size	Price	Retail
TR1616544	44"	16"x16"	5"	1"-1/2"	3/16"		
TR1626558	58"	16"x26"	5"	1"-1/2"	3/16"		
TR3030558	58"	30"x30"	5"	1"-1/2"	3/16"		
TR1626572	72"	16"x26"	5"	1"-1/2"	3/16"		
TR1638558	58"	16"x38"	5"	1"-1/2"	3/16"		

ANGLE GRATES

DOMESTIC PRODUCT - GALVANIZED



Part #	Manhole OD	Grate Opening	Depth	Opening - Web	Plate Size	Price	Retail
AG0808-58-1	58"	8"x8"	8"	1"-1/2"	3/16"		
AG0808-58	58"	8"x8"	8"	2"-3/4"	3/16"		
AG1212-44	44"	12"x12"	12"	2"-3/4"	3/16"		
AG1212-51	51"	12"x12"	12"	2"-3/4"	3/16"		
AG1212-58	58"	12"x12"	12"	2"-3/4"	3/16"		
AG1515-58	58"	15"x15"	12"	2"-3/4"	3/16"		
AG1515-86	86"	15"x15"	12"	2"-3/4"	3/16"		
AG1818-58	58"	18"x18"	12"	2"-3/4"	3/16"		
AG1818-72	72"	18"x18"	12"	2"-3/4"	3/16"		
AG1818-86	86"	18"x18"	12"	2"-3/4"	3/16"		
AG2424-58	58"	24"x24"	12"	2"-3/4"	3/16"		
AG2424-72	72"	24"x24"	12"	2"-3/4"	3/16"		
AG2424-86	86"	24"x24"	12"	2"-3/4"	3/16"		
AG3030-72	72"	30"x30"	12"	2"-3/4"	1/4"		
AG3030-86	86"	30"x30"	12"	2"-3/4"	1/4"		
AG3612-86	86"	36"x12"	12"	2"-3/4"	3/16"		

Part #	Box ID	Grate OD	Opening - Web	Open Sq. Ft.	Equivalent Perimeter	Price	
MC30X30	2'x2'	30"x30"	4"x4"-1"	2.69	235.39"		
MC30X30H	2'x2'	30"x30"	4"x4"-1"	2.69	235.39"		
MC42X42	3'x3'	42"x42"	4"x4"-1"	5.15	342.79"		
MC56X44	4'x3'	56"x44"	4"x4"-1"	7.36	428.49"		
MC56X56	4'x4'	56"x56"	4"x4"-7/8"	10.4	505.95"		
MC56X56-2	4'x4'	56"x56"	2"x2"-3/4"	8.36	485.92"		
MC68X68	5'x5'	68"x68"	4"x4"-1.1"	15.00	618.63"		
MC68X68-2	5'x5'	68"x68"	2"x2"-3/4"	12.72	599.76"		
MC80X80	6'x6'	80"x80"	4"x4"-3/4"	22.62	873.72"		

POND SKIMMER GRATES

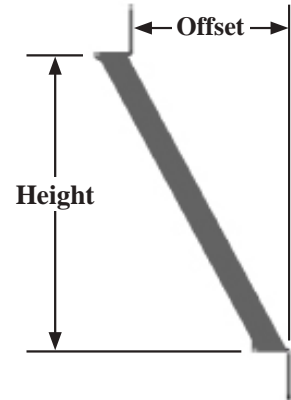
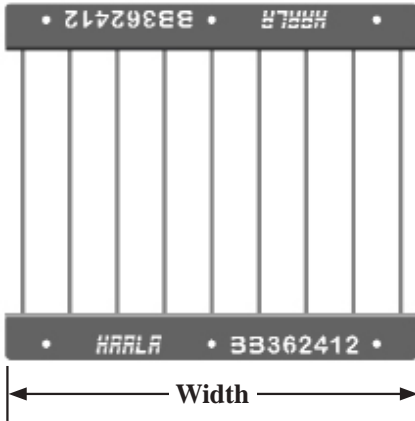
FOR BOX CULVERTS - DOMESTIC PRODUCT - GALVANIZED



Part #	Box ID	Grate Size OD	Plate Size	Opening -Web	Open Sq. Ft.	Equivalent Perimeter	Suggested Anchors	Price	Retail
PS2X3S	2'x3'	32"x44"	3/8"	4"x4"-3/4"	4.1	311.87"	4		
PS2X3SH	2'x3'	33.5"x44"	3/8"	3.3"x3.3"-3/4"	4.1	311.87"	4		
PS2X6S	2'x6'	80"x32"	3/8"	3.3"x3.3"-3/4"	7.8	524.13"	6		
PS2X6H	2'x6'	80"x32"	1/2"	4"x4"-1"	7.54	500.21"	6		
PS3X3S	3'x3'	44"x44"	3/8"	3.3"x3.3"-3/4"	5.85	381.20"	4		
PS4X4H	4'x4'	57"x57"	1/2"	3.3"x3.3"-3/4"	10.18	499.04"	6		
PS4X4H-2	4'x4'	57"x57"	1/2"	2"x2"-3/4"	7.58	456.96"	6		
PS4X5H	4'x5'	57"x68"	1/2"	4"x4"-1"	13.16	606.25"	6		
PS4X6H	4'x6'	57"x80"	3/8"	4"x4"-1"	15.35	667.08"	6		
PS5X5H	5'x5'	68"x68"	1/2"	4"x4"-1"	15.14	666.16"	6		
PS6X6H	6'x6'	81"x81"	1/2"	4"x4"-1"	20.06	787.28"	6		
PS7X7H	7'x7'	95"x95"	1/2"	4"x4"-1"	29.31	912.02"	6		
PS8X4H	8'x4'	57"x105"	1/2"	4"x4"-1"	20.48	794.34"	6		

Sizes 60" & larger have supports on the underside.

Grates can be made to your specifications. Hinged and locked access doors can be added.



- Grate is made from 3/8"x2" flats and has 3"x4"x3/8" formed angle iron mounting flanges on each end.

Part #	Width	Height	Offset	Plate Size	Bar Spacing	Price	Retail
BB362412-1.5	35"	23"	12"	3/8"	1.5"		
BB362412	35"	23"	12"	3/8"	4"		
BB362417	35"	23"	17"	3/8"	4"		
BB362424	35"	23"	24"	3/8"	4"		
BB3624285	35"	23"	28.5"	3/8"	4"		
BB363615	35"	35"	15"	3/8"	4"		
BB423015	41"	29"	15"	3/8"	4"		
BB483612	47"	35"	12"	3/8"	4"		
BB483612-4.5	47"	35"	12"	3/8"	4.5"		
BB484824	47"	47"	24"	3/8"	4"		
BB484824-4.5	47"	47"	24"	3/8"	4.5"		
BB604827	59"	47"	27"	3/8"	4"		
BB606636	59"	65"	36"	3/8"	4"		

Box CULVERT GRATES

RAISED TOP MOUNT - DOMESTIC PRODUCT - GALVANIZED

- Standard size hatch (about 30"x30") can be added for \$\$\$.
- Can be made to your specifications.



Part #	Box ID	Grate OD	Plate	Bar Dia.	Bar C/C	Opening -Web	Grate Height	# Pcs.	Price	Retail
BCTM2X3	2'x3'	31"x43"	3/8"	3/4"	6"	5"x5"-1"	12"	1		
BCTM2X3AH	2'x3'	31"x43"	3/8"	3/4"	6"	5"x5"-1"	12"	1		
BCTM3X3	3'x3'	45"x45"	3/8"	3/4"	6"	5"x5"-1"	12"	1		
BCTM4X4	4'x4'	5'x5'	3/8"	3/4"	6"	5"x5"-1"	12"	1		
BCTM4X4	4'x4'	5'x5'	3/8"	3/4"	6"	5"x5"-1"	12"	1		
BCTM4.5X3.5	4.5'x3.5'	63"x51"	3/8"	3/4"	6"	5"x5"-1"	12"	1		
BCTM5X4	5'x4'	69"x57"	3/8"	3/4"	6"	5"x5"-1"	12"	1		
BCTM5X4AH	5'x4'	69"x57"	3/8"	3/4"	6"	5"x5"-1"	12"	1		
BCTM5X5	5'x5'	6'x6'	3/8"	3/4"	6"	5"x5"-1"	12"	1		
BCTM5X5AH	5'x5'	69"x69"	3/8"	3/4"	6"	5"x5"-1"	12"	1		
BCTM6X3	6'x3'	7'x4'	3/8"	3/4"	6"	5"x5"-1"	12"	1		
BCTM6X4	6'x4'	7'x5'	3/8"	3/4"	6"	5"x5"-1"	12"	1		
BCTM6X5	6'x5'	7'x6'	3/8"	3/4"	6"	5"x5"-1"	12"	1		
BCTM6X6	6'x6'	7'x7'	3/8"	3/4"	6"	5"x5"-1"	12"	2		
BCTM6X6AH	6'x6'	7'x7'	3/8"	3/4"	6"	5"x5"-1"	12"	1		
BCTM7X2	7'x2'	8'x3'	3/8"	3/4"	6"	5"x5"-1"	12"	1		
BCTM7X3	7'x3'	8'x4'	3/8"	3/4"	6"	5"x5"-1"	12"	1		
BCTM7X4	7'x4'	8'x5'	3/8"	3/4"	6"	5"x5"-1"	12"	1		
BCTM7X5	7'x5'	8'x6'	3/8"	3/4"	6"	5"x5"-1"	12"	1		
BCTM7X6	7'x6'	8'x7'	3/8"	3/4"	6"	5"x5"-1"	12"	2		
BCTM7X6AH	7'x6'	92"x81.5"	3/8"	3/4"	6"	5"x5"-1"	12"	1		
BCTM7X7	7'x7'	8'x8'	3/8"	3/4"	6"	5"x5"-1"	12"	2		
BCTM8X4	8'x4'	9'x5'	3/8"	3/4"	6"	5"x5"-1"	12"	1		
BCTM8X5	8'x5'	9'x6'	3/8"	3/4"	6"	5"x5"-1"	12"	1		
BCTM8X6	8'x6'	9'x7'	3/8"	3/4"	6"	5"x5"-1"	12"	2		
BCTM8X7	8'x7'	9'x8'	3/8"	3/4"	6"	5"x5"-1"	12"	2		
BCTM8X8	8'x8'	9'x9'	3/8"	3/4"	6"	5"x5"-1"	12"	2		
BCTM10X10	10'x10'	11'x11'	3/8"	3/4"	6"	5"x5"-1"	12"	2		
BCTM10X4	10'x4'	11'x5'	3/8"	3/4"	6"	5"x5"-1"	12"	1		
BCTM10X5	10'x5'	11'x6'	3/8"	3/4"	6"	5"x5"-1"	12"	2		
BCTM10X6	10'x6'	11'x7'	3/8"	3/4"	6"	5"x5"-1"	12"	2		
BCTM10X6AH	10'x6'	11'x7'	3/8"	3/4"	6"	5"x5"-1"	12"	2		
BCTM10X7	10'x7'	11'x8'	3/8"	3/4"	6"	5"x5"-1"	12"	2		
BCTM10X8	10'x8'	11'x9'	3/8"	3/4"	6"	5"x5"-1"	12"	2		
BCTM10X9	10'x9'	11'x10'	3/8"	3/4"	6"	5"x5"-1"	12"	2		
BCTM12X4	12'x4'	13'x5'	3/8"	3/4"	6"	5"x5"-1"	12"	3		
BCTM12X5	12'x5'	13'x6'	3/8"	3/4"	6"	5"x5"-1"	12"	3		
BCTM12X6	12'x6'	13'x7'	3/8"	3/4"	6"	5"x5"-1"	12"	3		

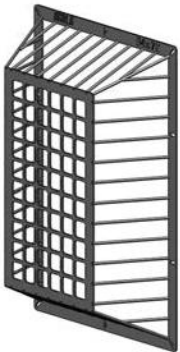
BOX CULVERT GRATES

RAISED TOP MOUNT - DOMESTIC PRODUCT - GALVANIZED

Part #	Box ID	Grate OD	Plate	Bar Dia.	Bar C/C	Opening -Web	Grate Height	# Pcs.	Price	Retail
BCTM12X7	12'x7'	13'x8'	3/8"	3/4"	6"	5"x5"-1"	12"	3		
BCTM12X8	12'x8'	13'x9'	3/8"	3/4"	6"	5"x5"-1"	12"	3		
BCTM12X9	12'x9'	13'x10'	3/8"	3/4"	6"	5"x5"-1"	12"	3		
BCTM12X10	12'x10'	13'x11'	3/8"	3/4"	6"	5"x5"-1"	12"	3		
BCTM12X11	12'x11'	13'x12'	3/8"	3/4"	6"	5"x5"-1"	12"	3		
BCTM12X12	12'x12'	13'x13'	3/8"	3/4"	6"	5"x5" 1"	12"	3		

BOX CULVERT GRATES

SIDE GRATES - DOMESTIC PRODUCT - GALVANIZED



Part #	Grate OD	Grate Opening	Plate	Bar Dia.	Bar C/C	Opening -Web	Grate Height	Price	Retail
MC42X72	42"x72"	36"x66"	3/8"	5/8"	4-3/4"	4"x4"-3/4"	18"		
MC54X36	54"x36"	48"x30"	3/8"	5/8"	4-3/4"	4"x4"-3/4"	18"		
MC54X42	54"x42"	48"x36"	3/8"	5/8"	4-3/4"	4"x4"-3/4"	18"		
MC54X54	54"x54"	48"x48"	3/8"	5/8"	4-3/4"	4"x4"-3/4"	18"		
MC54X60	54"x60"	48"x54"	3/8"	5/8"	4-3/4"	4"x4"-3/4"	18"		
MC54X72	54"x72"	48"x66"	3/8"	5/8"	4-3/4"	4"x4"-3/4"	18"		

BOX CULVERT GRATES

INLET GRATE - DOMESTIC PRODUCT - GALVANIZED



Part #	Grate Opening	OD x HT	Plate Size	Price	Retail
IG121206	12"x12"	17"x17"x6"	1/4"		
IG121806	12"x18"	17"x23"x6"	1/4"		
IG122410	12"x24"	17"x29"x10"	1/4"		
IG123010	12"x30"	17"x35"x10"	1/4"		
IG123610	12"x36"	17"x41"x10"	1/4"		
IG124810	12"x48"	17"x53"x10"	1/4"		
IG126010	12"x60"	17"x65"x10"	1/4"		
IG151506	15"x15"	20"x20"x6"	1/4"		
IG151510	15"x15"	20"x20"x10"	1/4"		
IG181804-6	18"x18"	23"x23"x4"	1/4"		
IG181810	18"x18"	23"x23"x10"	1/4"		
IG183012	18"x30"	23"x36"x12"	1/4"		
IG183612	18"x36"	24"x42"x12"	1/4"		
IG242406	24"x24"	30"x30"x6"	1/4"		
IG242412	24"x24"	30"x30"x12"	1/4"		
IG303006	30"x30"	36"x36"x6"	1/4"		
IG303012	30"x30"	36"x36"x12"	1/4"		
IG363606	36"x36"	42"x42"x6"	1/4"		
IG363612	36"x36"	42"x42"x12"	1/4"		

Box CULVERT GRATES

ANGLE GRATES - DOMESTIC PRODUCT - GALVANIZED

Part #	Grate Opening	W x H x D	Opening - Web	Plate Size	Price	
AG0606	6"x6"	10"x8"x6"	2"-1/2"	3/16"		
AG1212	12"x12"	19"x15"x12"	2"-3/4"	3/16"		
AG1212-1	12"x12"	19"x15"x12"	1"-1/2"	3/16"		
AG1230	12"x30"	19"x33"x12"	2"-3/4"	3/16"		
AG1248	12"x48"	19"x51"x12"	2"-3/4"	3/16"		
AG1515	15"x15"	21"x18"x12"	2"-3/4"	3/16"		
AG1818	18"x18"	25"x21"x12"	2"-3/4"	3/16"		
AG2412	24"x12"	30"x15"x12"	2"-3/4"	3/16"		
AG2412-1	24"x12"	30"x15"x12"	1"-1/2"	3/16"		
AG2424	24"x24"	30"x27"x12"	2"-3/4"	3/16"		
AG3030	30"x30"	37"x34"x12"	2"-3/4"	3/16"		
AG3036	30"x36"	37"x39"x12"	2"-3/4"	3/16"		
AG3618	36"x18"	42-1/2"x24"x12"	2"-3/4"	3/16"		
AG3624	36"x24"	42-1/2"x27"x12"	2"-3/4"	3/16"		
AG3636	36"x36"	42-1/2"x39"x12"	2"-3/4"	3/16"		
AG4818	48"x18"	54-1/2"x21"x12"	2"-3/4"	3/16"		
AG4824	48"x24"	54-1/2"x27"x12"	2"-3/4"	3/16"		
AG4836	48"x36"	54-1/2"x39"x12"	2"-3/4"	1/4"		



ANGLE GRATE FLAT WALL -

Box CULVERT GRATES

Part #	Grate Opening	Depth	Opening - Web	Plate Size	Price	Retail
TR10135	10"x13"	5"	1"-1/2"	3/16"		
TR10265	10"x26"	5"	1"-1/2"	3/16"		
TR24265	24"x26"	5"	1"-1/2"	3/16"		
TR24365	24"x36"	5"	1"-1/2"	3/16"		



Box CULVERT GRATES

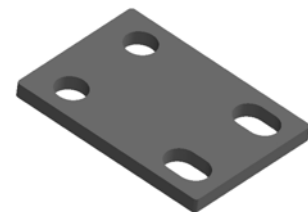
RAISED PLATE GRATE - DOMESTIC PRODUCT - GALVANIZED

Part #	Grate Opening	OD x HT	Plate Size	Price	Retail
RPG88	8"x8"	8"x12"x4"	3/16"		
RPG1212	12"x12"	12"x16"x4"	1/4"		
RPG1818	18"x18"	18"x22"x4"	1/4"		



Part #	Description	Price
UP19	Plate 10"x14"x3/8" Flat Galv	
UP23	Plate 10"x14"x3/8"x40° Galv	
UP22	Plate 10"x14"x3/8"x45° Galv	
UP05	Plate 10"x14"x1" Flat Galv	
UP15	Plate 10"x14"x1"x15° Galv	
UP16	Plate 10"x14"x1"x30° Galv	
UP06	Plate 10"x14"x1"x35° Galv	
UP07	Plate 10"x14"x1"x45° Galv	
UP08	Plate 10"x14"x1"x55° Galv	
UP09	Plate 10"x14"x1"x60° Galv	
UP10	Plate 10"x14"x1"x65° Galv	
UP04	Plate 10"x14"x1"x90° Galv	
UP11	Plate 10"x17-1/4"x1"x30° Galv	
UP20	Plate 10"x17"x1"x45° Galv	
UP28	Plate 10"x18"x1"x60° Galv	
UP12	Plate 10"x19"x1"x45° Galv	
UP13	Plate 10"x21"x1"x45° Galv	
UP02	Plate 4"x28"x5/8" Galv	
UP21	Plate 6"x30"x1" Galv	
UP17	Washer 4"x4"x1/4" Galv - 1-1/8"	
UP18	Washer 4"x4"x3/8" Galv - 1-1/8"	
UP01	Washer 4"x4"x1/2" Galv - 1-1/8"	
UP14	Washer 4"x4"x1/2" Galv - 1-3/8"	

Fasteners		
Part #	Description	Price
92020	Bolt 1"x2" Galv. Imp.	
92021	Bolt 1"x2-1/4" Galv. Imp.	
92022	Bolt 1"x2-1/2" Galv. Imp.	
92024	Bolt 1"x3" Galv. Imp.	
10642-06485	Hex Nut 1" Galv. Dom.	
UP03	Stud Bolt 1"x6" 8 TPI Galv. Dom.	
060118	Washer 1" USS Galv. Dom.	
52010	Wedge Anchor 1/2"x3-3/4" Zinc Imp.	
52060	Wedge Anchor 1/2"x3-3/4" Stainless Dom.	
52065	Wedge Anchor 5/8"x5" Stainless Dom.	
52070	Wedge Anchor 3/4"x5-1/2" Stainless Dom.	
100-0900	Wedge Anchor 1"x9" Galv. Dom.	



Products can be made to your specifications.

Screens & Grates Typically Designed for Ducks Unlimited (DU) or Department of Natural Resources (DNR) Projects

Walkways with Fish Fingers

- Includes: Railing, beams, walkway grating

Swinging Fish Finger

- Available in custom widths
- Typical material is mild steel, Hot Dip Galv
- Also available in stainless steel

End Sections

- Typical Material is stainless steel
- Designed for RCP or CMP
- Includes winch for lifting the screen

