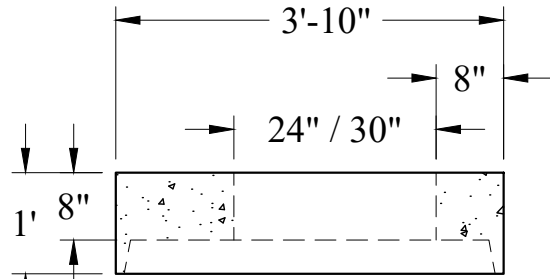
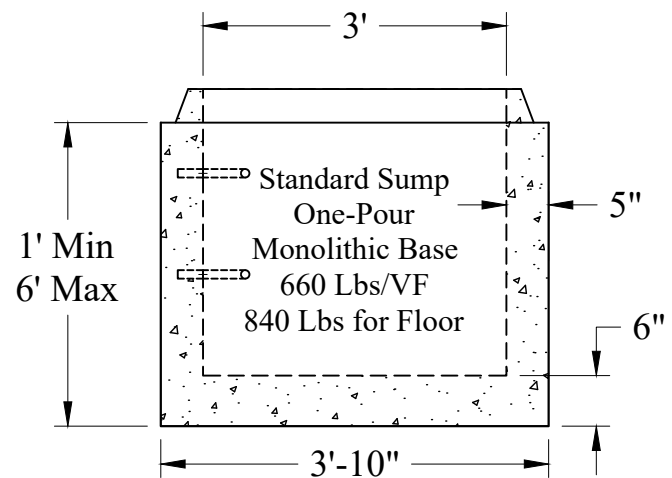
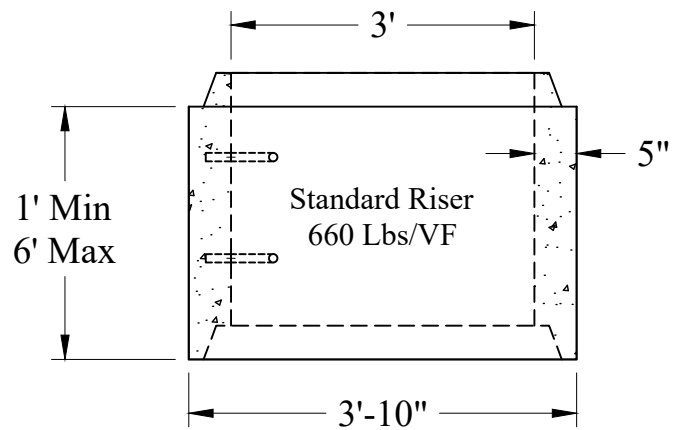


Risers	
Height	Part #
1'	MH3-1R
1'-6"	MH3-1.5R
2'	MH3-2R
2'-6"	MH3-2.5R
3'	MH3-3R
3'-6"	MH3-3.5R
4'	MH3-4R
4'-6"	MH3-4.5R
5'	MH3-5R
5'-6"	MH3-5.5R
6'	MH3-6R



24" / 30" Offset Top Slab
840 / 725 Lbs
P/N: MH3-TS24OFF / MH3-TS30OFF



Sumps	
Height	Part #
1'	MH3-1S
1'-6"	MH3-1.5S
2'	MH3-2S
2'-6"	MH3-2.5S
3'	MH3-3S
3'-6"	MH3-3.5S
4'	MH3-4S
4'-6"	MH3-4.5S
5'	MH3-5S
5'-6"	MH3-5.5S
6'	MH3-6S

General Notes

- Concrete: $f_c = 4,000$ psi @ 28 Days Minimum, Type III Cement
- HS-20 Design Loading Conforms to Latest Specifications
ASTM C478, AASHTO M199 Precast Reinforced Concrete Manhole Sections
- One Pour Monolithic Base Section (Unless Otherwise Noted)
- Steel Reinforcement Conforms to Latest ASTM Specification:
ASTM A-615, Grade 60 Black Deformed Bars
ASTM A-185 Welded Wire Fabric
- Sections Available in Increments of 6"
- Plastic Manhole Steps (If Required) are Steel Reinforced
Conforming to ASTM C-478

Phoenix
Precast
Products

3' Diameter
Typical Sections

P/N: See Above

Concord, NH 03301