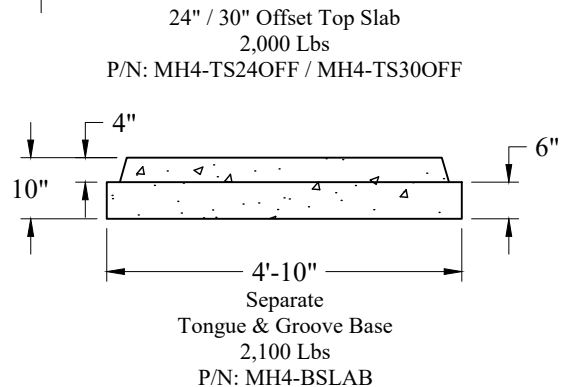
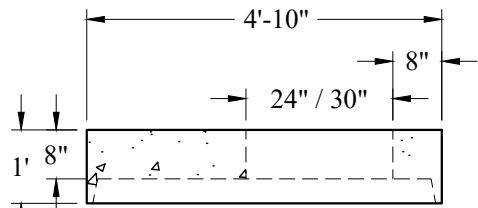
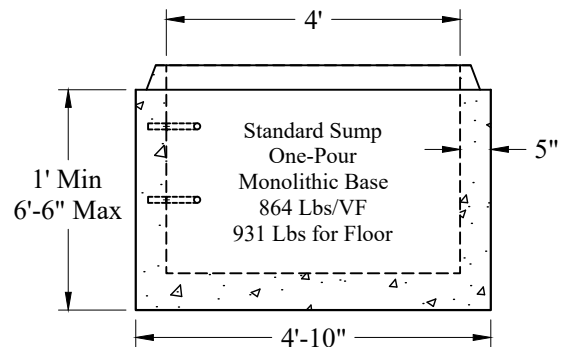
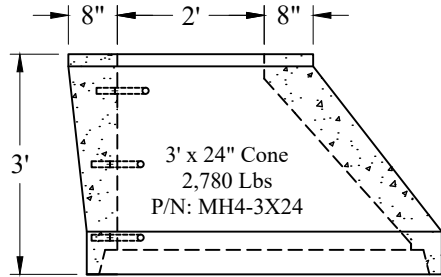
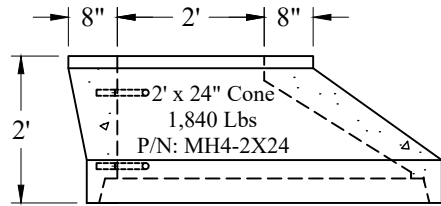


Sumps	
Height	Part #
1'	MH4-1S
1'-6"	MH4-1.5S
2'	MH4-2S
2'-6"	MH4-2.5S
3'	MH4-3S
3'-6"	MH4-3.5S
4'	MH4-4S
4'-6"	MH4-4.5S
5'	MH4-5S
5'-6"	MH4-5.5S
6'	MH4-6S

Risers	
Height	Part #
1'	MH4-1R
1'-6"	MH4-1.5R
2'	MH4-2R
2'-6"	MH4-2.5R
3'	MH4-3R
3'-6"	MH4-3.5R
4'	MH4-4R
4'-6"	MH4-4.5R
5'	MH4-5R
5'-6"	MH4-5.5R
6'	MH4-6R
6'-6"	MH4-6.5R



General Notes

- Concrete: $f_c = 4,000$ psi @ 28 Days Minimum, Type III Cement
- HS-20 Design Loading Conforms to Latest Specifications
ASTM C478, AASHTO M199 Precast Reinforced Concrete Manhole Sections
- One Pour Monolithic Base Section (Unless Otherwise Noted)
- Steel Reinforcement Conforms to Latest ASTM Specification:
ASTM A-615, Grade 60 Black Deformed Bars
ASTM A-185 Welded Wire Fabric
- Sections Available in Increments of 6"
- Plastic Manhole Steps (If Required) are Steel Reinforced
Conforming to ASTM C-478

Phoenix
Precast
Products

4' Diameter
Typical Sections

P/N: See Above

Concord, NH 03301