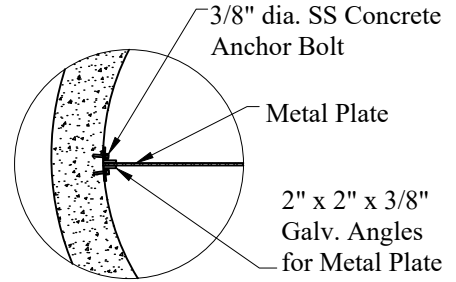
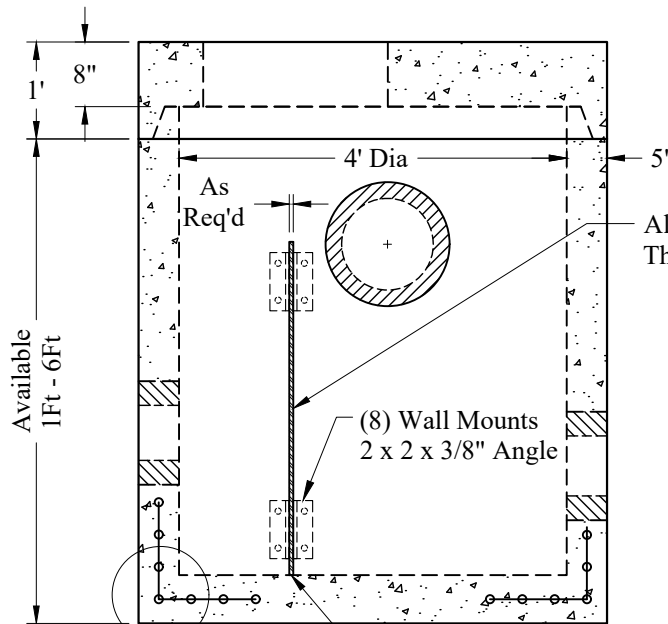


Primary Outlet



Detail of Mounting Weir Plate to Inner Wall of Structure.



Aluminum, Stainless, or Galvanized Steel Plate Thickness, Height, and Width as Required

See General Notes 1 & 5

Weir Plate (Height per Plans) Bolted Into Base Section

General Notes

1. Steel Reinforcement Conforms to Latest ASTM Specification:
ASTM A-615, Grade 60 Black Deformed Bars
ASTM A-185 Welded Wire Fabric
0.12 Sq. In./Lineal Ft. And 0.12 Sq. In.(Both Ways) Base Bottom
2. Concrete: $f_c = 4,000$ psi @ 28 Days Minimum, Type III Cement
3. Butyl Rubber Joint Sealant Provided Conforms to ASTM C-990 And Federal Spec SS-S-210A
4. HS-20 Design Loading Conforms to Latest Specifications
ASTM C478, AASHTO M199 Precast Reinforced Concrete Manhole Sections
5. One Pour Monolithic Base Section

Phoenix
Precast
Products

4' Diameter Drain
Manhole With
Metal Weir Plate

P/N: None

Concord, NH 03301