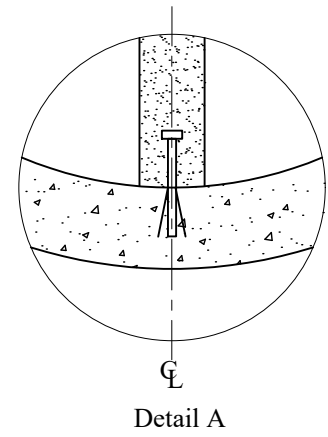
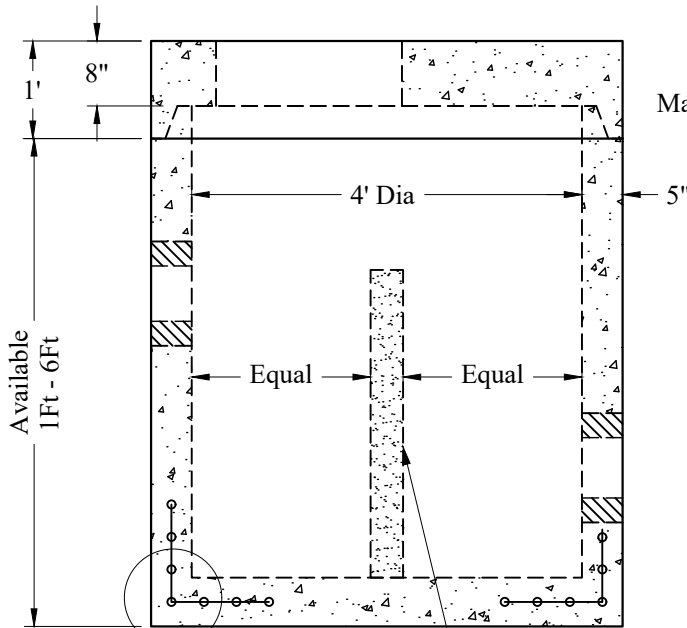


Installed Plan View

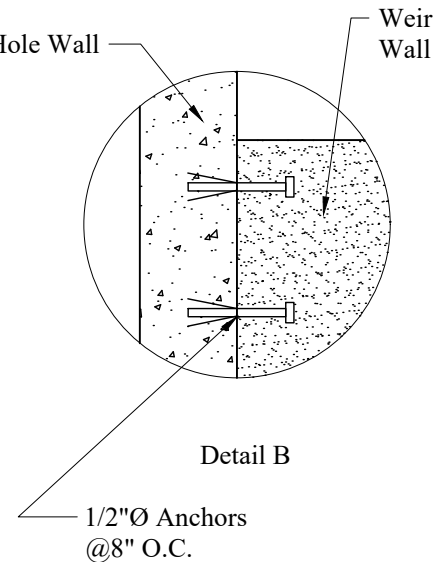


Detail A



See General Notes 1 & 5

Weir (Height per Plans)
Cast Into Base Section



Detail B

1/2"Ø Anchors
@8" O.C.

General Notes

1. Steel Reinforcement Conforms to Latest ASTM Specification:
ASTM A-615, Grade 60 Black Deformed Bars
ASTM A-185 Welded Wire Fabric
0.12 Sq. In./Lineal Ft. And 0.12 Sq. In.(Both Ways) Base Bottom
2. Concrete: $f_c = 4,000$ psi @ 28 Days Minimum, Type III Cement
3. Butyl Rubber Joint Sealant Provided Conforms to ASTM C-990
And Federal Spec SS-S-210A
4. HS-20 Design Loading Conforms to Latest Specifications
ASTM C478, AASHTO M199 Precast Reinforced Concrete
Manhole Sections
5. One Pour Monolithic Base Section

Phoenix
Precast
Products

4' Diameter Drain
Manhole With Concrete
Weir Cast In

P/N: None

Concord, NH 03301