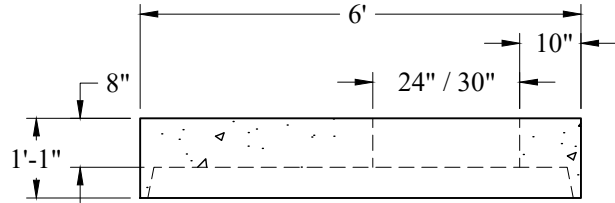
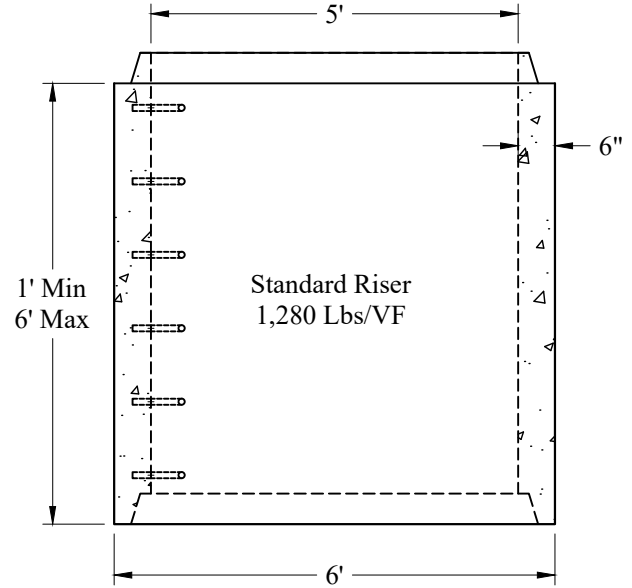


Separate
Tongue & Groove Base
4,400 Lbs
P/N: MH5-BSLABTG



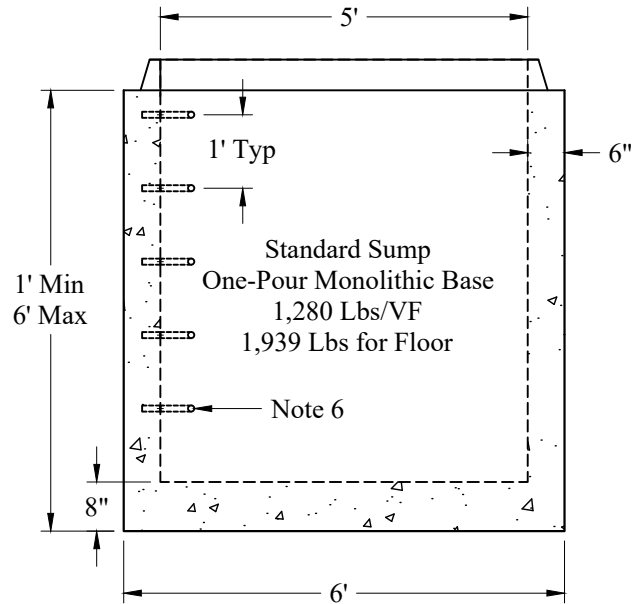
24" / 30" Offset Top Slab
3,040 Lbs
P/N: MH5-TS24OFF / MH5-TS30OFF

Risers	
Height	Part #
1'	MH5-1R
1'-6"	MH5-1.5R
2'	MH5-2R
2'-6"	MH5-2.5R
3'	MH5-3R
3'-6"	MH5-3.5R
4'	MH5-4R
4'-6"	MH5-4.5R
5'	MH5-5R
5'-6"	MH5-5.5R
6'	MH5-6R



Standard Riser
1,280 Lbs/VF

Sumps	
Height	Part #
1'	MH5-1S
1'-6"	MH5-1.5S
2'	MH5-2S
2'-6"	MH5-2.5S
3'	MH5-3S
3'-6"	MH5-3.5S
4'	MH5-4S
4'-6"	MH5-4.5S
5'	MH5-5S
5'-6"	MH5-5.5S
6'	MH5-6S



Standard Sump
One-Pour Monolithic Base
1,280 Lbs/VF
1,939 Lbs for Floor

General Notes

- Concrete: $f_c = 4,000$ psi @ 28 Days Minimum, Type III Cement
- HS-20 Design Loading Conforms to Latest Specifications
ASTM C478, AASHTO M199 Precast Reinforced Concrete
Manhole Sections
- One Pour Monolithic Base Section (Unless Otherwise Noted)
- Steel Reinforcement Conforms to Latest ASTM Specification:
ASTM A-615, Grade 60 Black Deformed Bars
ASTM A-185 Welded Wire Fabric
- Sections Available in Increments of 6"
- Plastic Manhole Steps (If Required) are Steel Reinforced
Conforming to ASTM C-478

Phoenix
Precast
Products

5' Diameter
Typical Sections

P/N: See Above

Concord, NH 03301