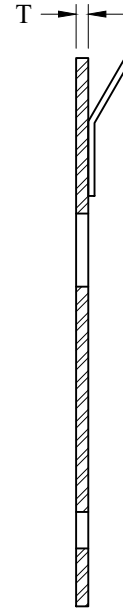
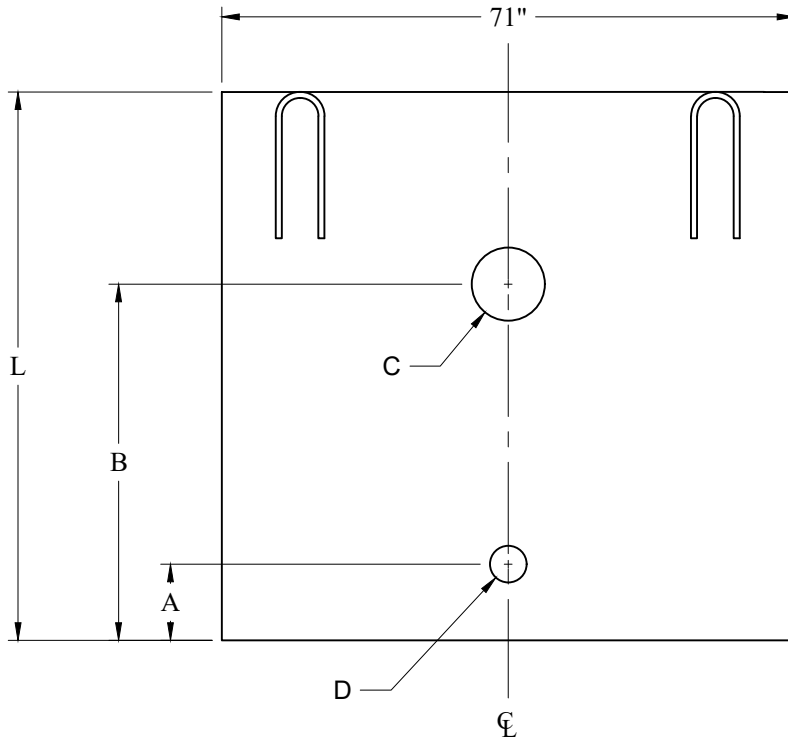


Plate is Secured to Structure with Galvanized Steel Angles and SS 3/8" Dia Concrete Anchor Bolts



**Material Options**

1. Aluminum 1/4" Plate
2. #316 Stainless Steel 3/16" Plate
3. Steel 1/4" Plate. Finish Options:
  - A. Painted
  - B. Hot Dip Galvanized

Requirements	
A	
B	
C	
D	
L	
T	
M	
F	

**Definitions:**

- A - Det Orifice Ctr Elev
- B - O/F Orifice Ctr Elev
- C - O/F Orifice Dia
- D - Det Orifice Dia
- L - Length
- T - Thickness
- M - Material
- F - Finish

**Phoenix  
Precast  
Products**

**6' ID Weir Plate**

P/N: Custom As Required