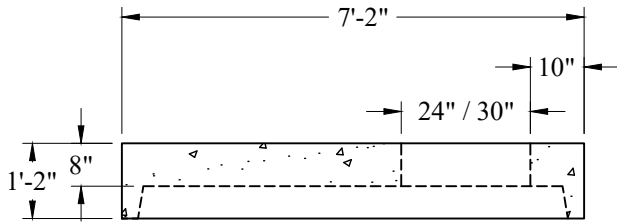


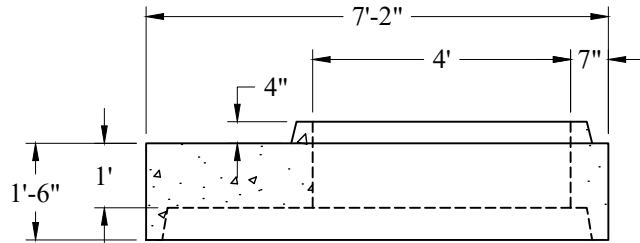
1-800-639-2199

Fax (603) 224-2927

Std Structures 6 Ft Dia Typical Sections



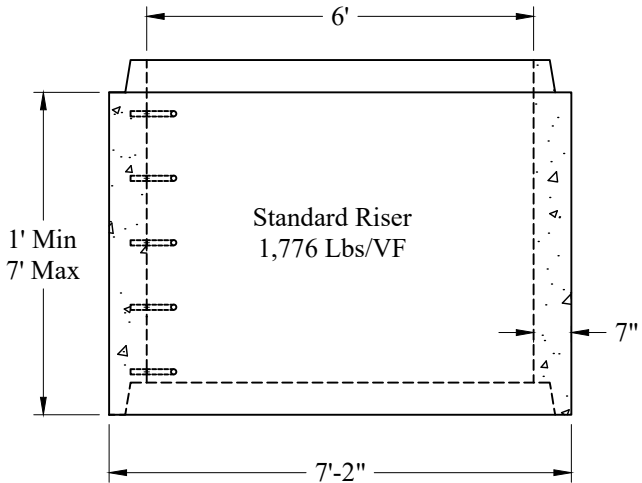
24" / 30" Offset Top Slab  
4,150 Lbs  
P/N: MH6-TS24Off / MH6-TS30OFF



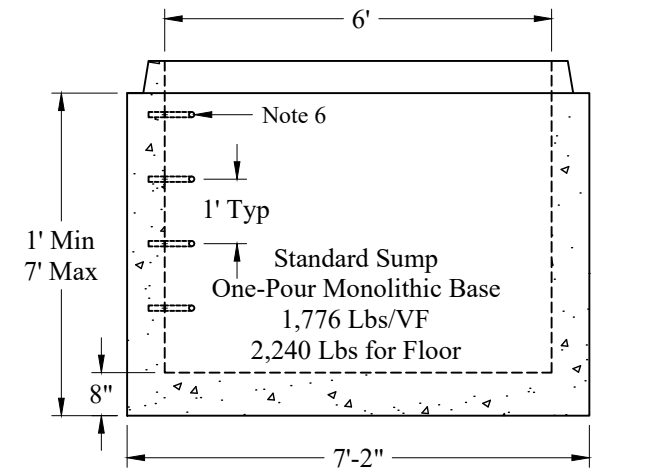
6' to 4' Transition Top Slab  
4,775 Lbs  
P/N: MH6-TSTRAN48

Risers	
Height	Part #
1'	MH6-1R
1'-6"	MH6-1.5R
2'	MH6-2R
2'-6"	MH6-2.5R
3'	MH6-3R
3'-6"	MH6-3.5R
4'	MH6-4R
4'-6"	MH6-4.5R
5'	MH6-5R
5'-6"	MH6-5.5R
6'	MH6-6R
6'-6"	MH6-6.5R
7'	MH6-7R

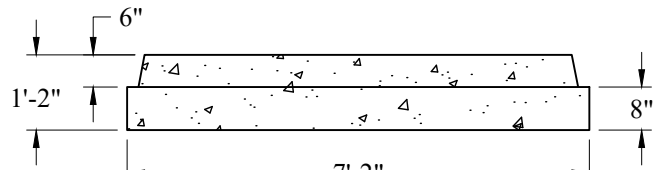
Sumps	
Height	Part #
1'	MH6-1S
1'-6"	MH6-1.5S
2'	MH6-2S
2'-6"	MH6-2.5S
3'	MH6-3S
3'-6"	MH6-3.5S
4'	MH6-4S
4'-6"	MH6-4.5S
5'	MH565S
5'-6"	MH6-5.5S
6'	MH6-6S
6'-6"	MH6-6.5S
7'	MH6-7S



Standard Riser  
1,776 Lbs/VF



Standard Sump  
One-Pour Monolithic Base  
1,776 Lbs/VF  
2,240 Lbs for Floor



Separate  
Tongue & Groove Base  
6,515 Lbs  
MH6-TSBSLAB8

**General Notes**

- Concrete:  $f_c = 4,000$  psi @ 28 Days Minimum, Type III Cement
- HS-20 Design Loading Conforms to Latest Specifications  
ASTM C478, AASHTO M199 Precast Reinforced Concrete Manhole Sections
- One Pour Monolithic Base Section (Unless Otherwise Noted)
- Steel Reinforcement Conforms to Latest ASTM Specification:  
ASTM A-615, Grade 60 Black Deformed Bars  
ASTM A-185 Welded Wire Fabric
- Sections Available in Increments of 6"
- Plastic Manhole Steps (If Required) are Steel Reinforced  
Conforming to ASTM C-478

Phoenix Precast Products

Phoenix Precast Products

Phoenix  
Precast  
Products

6' Diameter  
Typical Sections

P/N: See Above

Concord, NH 03301