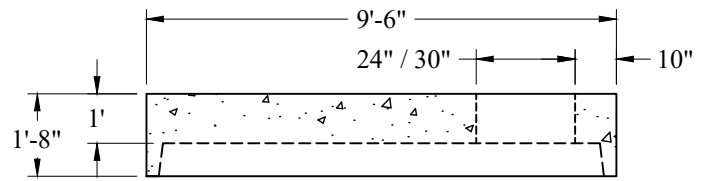


Risers	
Height	Part #
1'-6"	MH8-1.5R
2'	MH8-2R
2'-6"	MH8-2.5R
3'	MH8-3R
3'-6"	MH8-3.5R
4'	MH8-4R
4'-6"	MH8-4.5R
5'	MH8-5R
5'-6"	MH8-5.5R
6'	MH8-6R
6'-6"	MH8-6.5R
7'	MH8-7R
7'-6"	MH8-7.5R
8'	MH8-8R

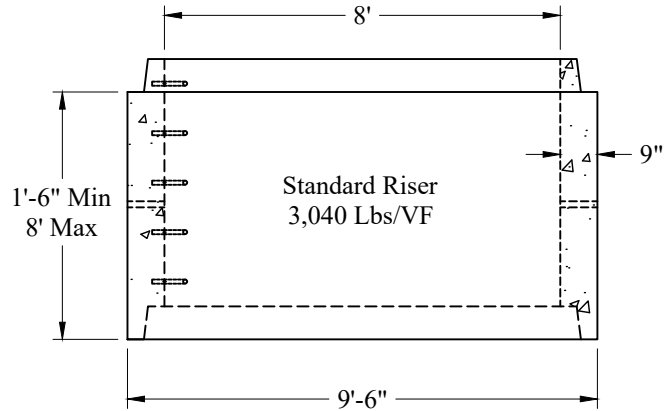
Sumps	
Height	Part #
1'	MH8-1S
1'-6"	MH8-1.5S
2'	MH8-2S
2'-6"	MH8-2.5S
3'	MH8-3S
3'-6"	MH8-3.5S
4'	MH8-4S
4'-6"	MH8-4.5S
5'	MH8-5S
5'-6"	MH8-5.5S
6'	MH8-6S
6'-6"	MH8-6.5S
7'	MH8-7S
7'-6"	MH8-7.5S
8'	MH8-8S



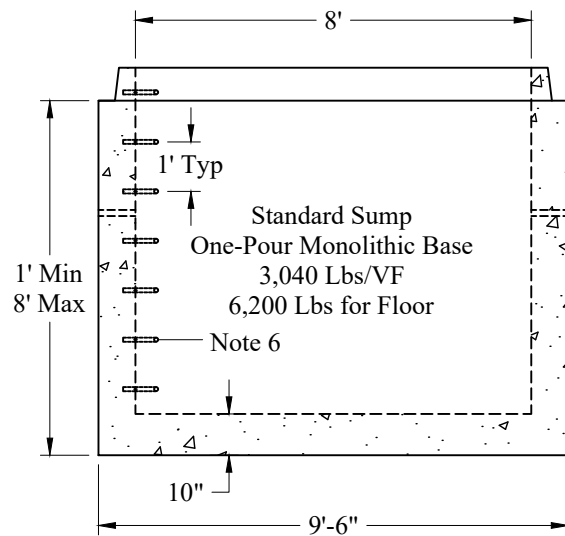
24" / 30" Offset Top Slab

11,650 Lbs

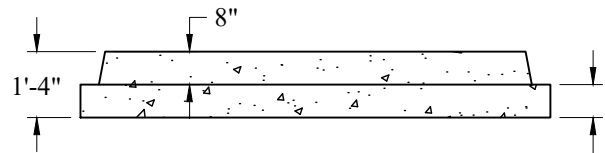
P/N: MH8-TS24OFF / MH8-TS30OFF



Standard Riser
3,040 Lbs/VF



Standard Sump
One-Pour Monolithic Base
3,040 Lbs/VF
6,200 Lbs for Floor
Note 6



Separate Tongue & Groove Base

12,415 Lbs

P/N: MH8-BSLAB

General Notes

- Concrete: $f_c = 4,000$ psi @ 28 Days Minimum, Type III Cement
- HS-20 Design Loading Conforms to Latest Specifications
ASTM C478, AASHTO M199 Precast Reinforced Concrete
Manhole Sections
- One Pour Monolithic Base Section (Unless Otherwise Noted)
- Steel Reinforcement Conforms to Latest ASTM Specification:
ASTM A-615, Grade 60 Black Deformed Bars
ASTM A-185 Welded Wire Fabric
- Sections Available in Increments of 6"
- Plastic Manhole Steps (If Required) are Steel Reinforced
Conforming to ASTM C-478

Phoenix
Precast
Products

8' Diameter
Typical Sections

P/N: See Above

Concord, NH 03301