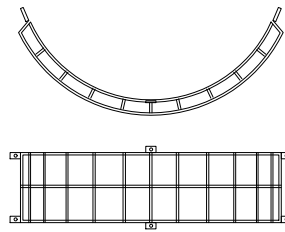
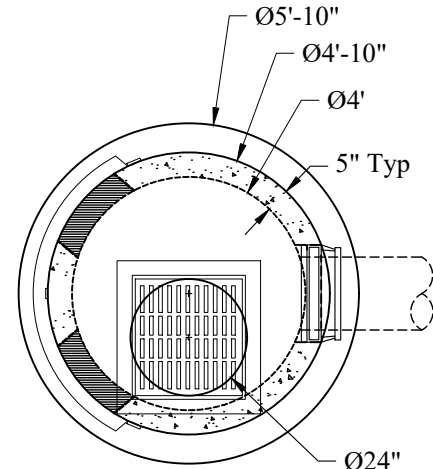


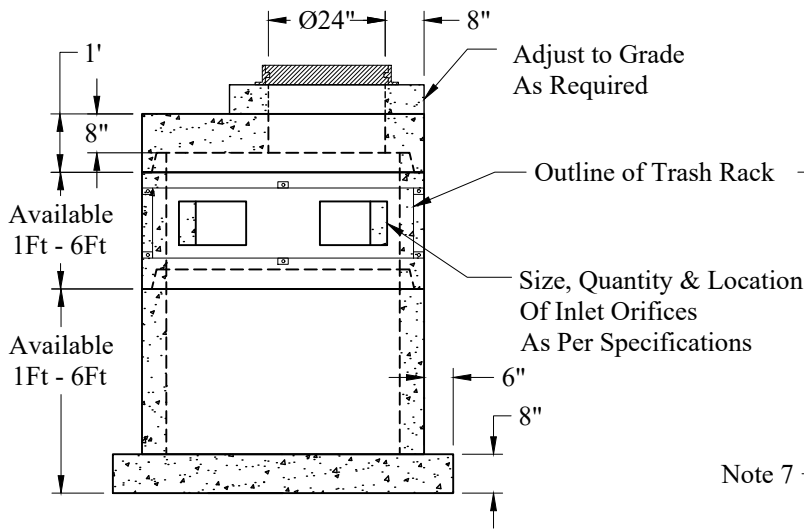
Outlet View



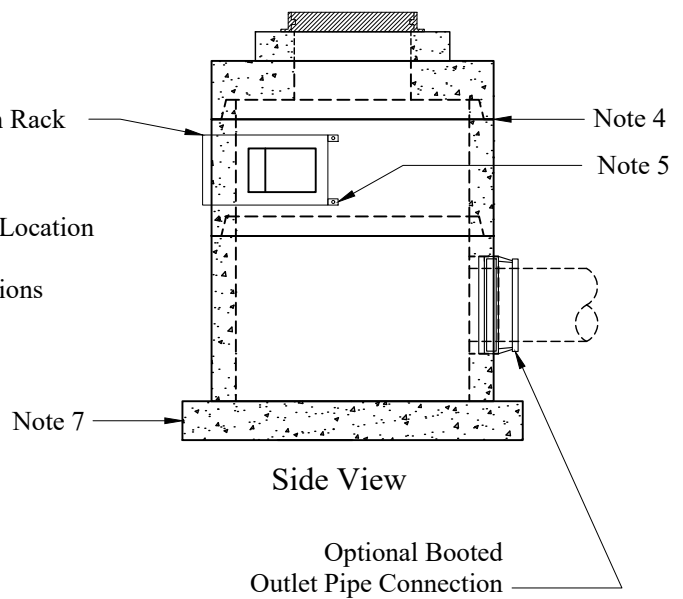
Welded Steel Bar
Trash Rack
See Note 6



Plan View



Inlet View



Side View

General Notes

1. Concrete: $f_c = 4,000$ psi @ 28 Days Minimum, Type III Cement
2. Reinforcing Steel: ASTM-A615 Grade #60, ASTM A-185 WWF
3. Design Loading: AASHTO-HS20-44
ASTM C-478 Precast Reinforced Concrete Manhole Sections
4. Butyl Rubber Joint Sealant Conforms to Latest ASTM C-990 Specs
5. Grates/Trash Racks Fastened with SS Hardware
6. Grates/Trash Racks Finish Options: Galvanized, Painted,
Or Unfinished
7. One Pour Monolithic Base Section

**Phoenix
Precast
Products**

Standard 4' Diameter
Outlet Control Structure
Extended Base
With Rectangular Inlets
Trash Rack And Frame & Grate

P/N: Custom As Required

Concord, NH 03301